

Lot Type Grading Description

Est \$A

COMMONWEALTH OF AUSTRALIA - General & Miscellaneous Lots



Ex Lot 28

28	**/*OC		<p>Accumulation from Kangaroos including Second Wmk 2/- used, Third Wmk 6d blue Die II wmk inverted used (tiny tear) & 2/- brown *, SM Wmk 5/- 'OS' puncture CTO, CofA Wmk 5/- 'VG' puncture & 10/- used, 6d Engraved * & used, 5/- Bridge commercially used, KGVI 3d <i>White Wattles</i> & Die Ia both **, 'BCOF' set *, etc, a few pre-decimal booklets, some FDCs and commercial covers noted censor mail & advertising, quantity of used with potential postmark interest, also Decimals up to 2001 including mint; plus Colonies in album & loose in packets, and 'Victoria: The Half-Lenght Portraits' by CL Pack in fine condition; rather disorganised but definite pickings throughout, condition mixed but many fine. (1000s)</p>	800
36	**	A	<p>CINDERELLAS: 1934 Victoria & Melbourne Centenary labels in blocks of 20 x3 comprising two different configurations of designs, and blocks of 8 x5 with two configurations, unmounted. Superb!(8 blocks)</p>	150

COMMONWEALTH OF AUSTRALIA - Postal Stationery - Envelopes



Ex Lot 151

151	PS	A/A+	<p>Unused selection with KGV Star types x10, KGVI Oval 2½d with <i>Security Lining</i>, QEII 3½d 10c & 18c each with <i>Albino Impression</i> only, 5d light blue with 'SENDER'S NAME AND ADDRESS' across the stamp, 20c with <i>Printing Flaw</i>, etc, also STO QEII selection x10 including with advertising & 7c on Post Office 'Little Letter' (only 300 requisitioned), fine to very fine. A very good lot. (33)</p>	1,000
-----	----	------	--	-------

COMMONWEALTH OF AUSTRALIA - Envelopes - Stamped to Order

This class of Postal Stationery is also called by the less-accurate expression "Printed to Private Order" (PTPO). [See also Lots 766 and 767]



Ex Lot 160

160	PS		<p>Large box of KGV to Decimal issues with many better items and lots of attractive advertising types, Star ½d green uprated, KGV Oval 1d & 2d both uprated with 'VOCO' perfin, KGVI 2d lilac for <i>Harris Scarfe</i> x2, QEII 3d green with <i>Offset on Reverse</i>, 7c on Post Office 'Little Letter' (only 300 requisitioned), etc, condition variable. Inspection will be rewarded. (100s)</p>	1,000
-----	----	--	--	-------

Lot	Type	Grading	Description	Est \$A
-----	------	---------	-------------	---------

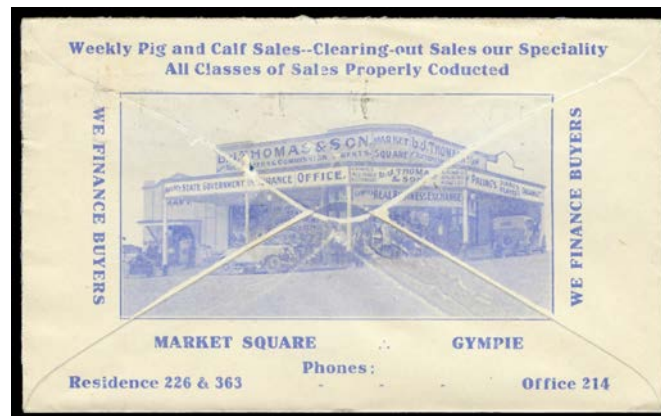
COMMONWEALTH OF AUSTRALIA - Postal Stationery - Letter Cards

162	PS	A	1913 Kangaroo 1d Die 2 #L16 'GOVERNMENT HOUSE/PERTH' unframed-oval in black overprinted on the view side 'From GLOBE TIMBER MILLS COMPANY, Adelaide' & with <i>pro forma</i> advice within, used Adelaide to Strathalbyn. Rare advertising. [The 'Ginger Meggs' Collection offered in our auction of 3.3.2019, included a similarly overprinted KGV 1d card that sold for \$659]	400
-----	----	---	---	-----

COMMONWEALTH OF AUSTRALIA - Postal Stationery - Postal Cards

166	PS		Advertising group with Fullface 1d ACSC #P1 for <i>Fauldings</i> , 1d Roo for <i>Hall & Sons</i> (unused), KGV 1d #P27 for <i>Metropolitan Fire Brigade</i> & Die II for <i>Daily News (Perth)</i> , #P28d for <i>Kapunda Technical School</i> (unused), 1½d brown & 1d violet both punctured 'OS/NSW' for <i>Sydney Harbour Trust</i> , 1d green #64 for <i>Mayor Shafto's Campaign (Perth)</i> (unused) & for <i>Mackinnon & Cox 'Sale of Racehorses'</i> , 1½d brown #P68 for <i>Kew Presbyterian Church</i> (unused), fine to very fine. (10)	250
174	PS	A+	STAMPED TO ORDER: 1938-50 KGVI Oval 2d green ACSC #PS31 for <i>Henry Jones & Co (Tas)</i> , unused, Cat \$400. Superb!	180

COMMONWEALTH OF AUSTRALIA - Postal History



Ex Lot 280

280	CPS		1930s-60s advertising covers with many attractive illustrated types including for <i>LJ Thomas Stock Agents (Gympie)</i> , <i>Monaghans Removalists (Lismore NSW)</i> , <i>Woodroffe's Cordials (Adelaide)</i> , <i>Glenara Private Hotel (Lakes Entrance)</i> , <i>Bush's Bird Shop (Sydney)</i> , <i>Canberra Hotel (Brisbane)</i> , <i>Lucky Nolan Sweepstakes (Ipswich)</i> , <i>Tasmanian Government Railways</i> , etc, several <i>Rotary</i> types & <i>Cleland Shipping Agents (Port Adelaide)</i> advertising collar, some on Postal Stationery, etc, a few faults but generally fine to very fine. (80+)	500
-----	-----	--	---	-----

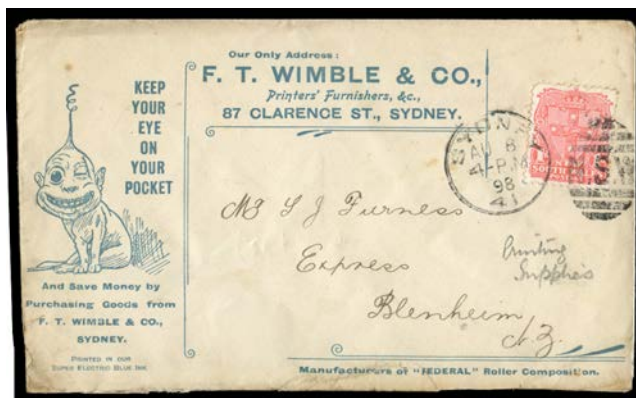


Ex Lot 281

281	C		Post-WWII pre-decimal advertising covers mostly with imprints only but many are illustrated including a number of very attractive items, the collection is from GB so many are addressed there mostly by air with some better frankings including ANZAC 2/3d single & a pair on a registered cover, generally fine to very fine. A really appealing lot. (170 approx)	600 ^T
-----	---	--	--	------------------

COMMONWEALTH OF AUSTRALIA - Postal History (continued)

Lot	Type	Grading	Description	Est \$A
-----	------	---------	-------------	---------



Ex Lot 282

282	CPS		Advertising illustrations & imprints on covers & Postal Stationery with many very attractive items tho the condition is a bit mixed so inspection is recommended. We noted Fullface 1d Letter Card with 'From GLOBE TIMBER MILLS COMPANY, Adelaide' Overprint, 1930s <i>Swans Ltd Heaters (NSW)</i> lettersheet plus folder for 6 such forms, <i>David Shearer Farm Equipment (SA)</i> x5 with 'Moistur' Error, etc. (70 approx)	600
283	CPS/L		A mostly unprepossessing group but a few better items including <i>Ashburton Road Board (WA)</i> airmail to Perth at 1/1d rate, 1933 <i>Mascot Aerial Pageant</i> blue PPC (VF unused), 1937 <i>Air Mail Exhibition</i> catalogue, a page of unusual labels, lots of Postal Stationery, etc, also some Victoria including 1858 to GB with Imperf 6d orange, condition variable. (100 approx)	250
284	C/CL		Covers accumulation mostly 1950s-70s domestic mail noted advertising, slogan & meter cancels, postmark interest, better Decimal frankings including 1969 5c PM booklet pair on formular aerogramme, range of 1971 7c Christmas single frankings (a complete set of 7 + extras), 1975 Science 24c solo on oversize cover, etc, plus 1959 airmail from West Germany repaired with 'RECEIVED IN AIR MAIL SEC-TION SYDNEY IN DAMAGED/CONDITION' cachets, also FDCs from the same period noted quantity of Hermes generics, condition mixed but many fine. Weighs 6kg. (250+)	200



Ex Lot 309

309	C		1939-45 WWII Civil Censorship group noted 1940 airmail to France with 9d Roo & 1/- Lyre and Perth 5-dot label, two 1941 airmails to India at 1/1d rate with Sydney labels, 1941 airmail to UK with Hobart 6-dot black label (plus three surface-rate items with red '6' labels), 1941 from Papua with Cairns '1/3' diamond cachet, 1942 to USA with Sydney '2/RETURN/TO/SENDER' cachet in red x3, 1943 via 'FIELD POST OFFICE/072' with Darwin '7/PASSED/BY/CENSOR/6' civilian cachet, c.1943 with KGV 3½d and 'US ARMY/CENSORED' cachets, 1944 OAS cover with Townsville '1/2' label & cachet, two with Newcastle '2/1' cachets & 9-dot labels, a few 'NOT OPENED' cachets, some advertising, other destinations include Ireland, Mauritius & New Zealand, also Southern Rhodesia 1941 airmail to Victoria with Melbourne label & cachet, plus Papua airmails to UK in 1939 with local 'OPENED BY CENSOR' complete labels x2 & 1940 with local 'PASSED BY CENSOR' cachet, condition mixed but many fine. (46)	600 ^T
320	CPS		1982-88 Reptiles & Amphibians plus 1983 Endangered Species usages accumulation with all values represented including single, multiple & mixed frankings, many overseas airmails plus some on postcards & stationery, noted 1c single on untaxed airmail cover & 70c single on large OHMS envelope, illustrated tourism covers, registered, AR & overseas express delivery, etc. (1000+)	200
321	CPS		1989 Sports usages accumulation with all values represented including single, multiple & mixed frankings, many overseas airmails plus some on postcards & stationery, noted 43c pair with 'INSUFFICIENT PAID FOR AIR TRANSMISSION' cachet & 70c on PSE to Botswana, illustrated 'tourist' covers, Security Post & Economy Air, a few taxed including with Finnish postage due cachet, etc. (1000+)	200
322	C		ADVERTISING COVERS: KGV group including many illustrated types noted 1921 <i>William East</i> Lodge Racing Sparkplug, 1933 <i>T Robinson</i> with Bloom Milker & Melotte Separator on back, 1933 <i>Metters</i> Bath Heaters x2 different, 1934 <i>Manchester Unity</i> Building & <i>Canada Cycle & Motor Co</i> Factory on back, 1935 <i>Aspro</i> Pill Packet airmail to UK, also 1929 to Germany with 'BAYWATER/Victoria' red R label plus KGV 1d STO Envelope for <i>Andrew Jack, Dyson & Co</i> , condition variable but many fine. (32)	300 ^T

COMMONWEALTH OF AUSTRALIA - Postal History (continued)

Lot	Type	Grading	Description	Est \$A
323	C		- KGVI-QEII group with many illustrated types noted 1940 C Scholtz Gunsmith Rifles & Target airmail to UK, R Treleven & Sons Removals Truck to NZ and Mullard Master Valves to USA, 1941 Allen's Irish Moss Gum Jubes to USA, 1946 Dunklings The Jewellers Diamond, 1948 Australian Sewing Machine Co Sewing Desk airmail to UK, 1952 Lucas Batteries and Ecks Beer, 1953 Simpson's Self-Raising Flour Packet multi-coloured with Brisbane meter, 1960 His Master's Voice illustrated meter, a few censored, registered including 1946 from St George's Terrace, WA with 'GEO TCE' provisional label, plus c.1942 lovely hand-painted watercolour view of house covering entire front of cover with 'H.M.AUSTRALIAN/SHIPS' cachet on back and KGVI 3d tied 'PAQUEBOT' boxed h/s, condition variable but many fine. (37)	300 ^T
324	OCPS		Covers accumulation 1930s-60s with a range of NSW & Queensland postmarks including on KGV frankings, lots of slogan cancels with thematic interest, some advertising, registered including 1945 'MULDU/QLD' with provisional label, official mail, stationery, etc, also range of off-cover KGV 1d reds with dated cancels, condition mixed but mostly fine. (1000+)	100

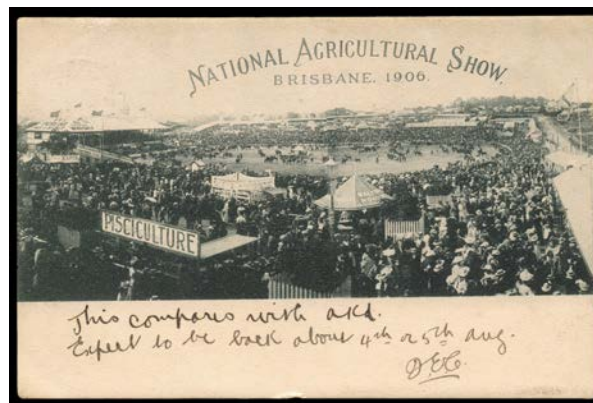
AUSTRALIAN PICTURE POSTCARDS

See also World Postcards Lots 924 to 960.



Ex Lot 334

334	C		Small box with NSW x32, Queensland x12, SAust x13, NT x2, Victoria x25 & WAust x8 etc, a few advertising cards, some Undivided Backs & <i>real photo</i> types, condition variable. Ex 'Tamiami'. (100 approx)	400 ^T
351	C	B	QUEENSLAND: 1905 advertising PPC for 'Lennon's Hotel, Brisbane' with vignette view of the hotel, to Sydney with 1d cancelled by 'GPO' killer & Brisbane Pillar Box 'PB' octagonal d/s alongside, minor corner bends.	80



Lot 352

352	C	A	- 'National Agricultural Show/Brisbane 1906' featuring the Pisciculture exhibits, several identifiable advertising hoardings, used in 1907.	100
-----	---	---	---	-----



Ex Lot 360

360	C		SUBJECTS ADVERTISING: Entertaining group including 1912 'A Zeynard's Lilliputian Circus' x2, <i>WF Roberts (Adelaide)</i> , <i>Taylor's Jam (NSW)</i> , <i>Geo Hudson & Son Timber Merchants (NSW)</i> , <i>Milkmaid Milk</i> used in Tasmania, several 1960s types for auto garages, etc, also NSW trade cards for <i>Eden Photo Studios</i> and <i>Colonial Mutual Assurance</i> ('Don Athaldo, the World's Strongest Man'), a couple are defective but most are fine to very fine. [See also Lot 370] (24)	600
-----	---	--	--	-----

AUSTRALIAN PICTURE POSTCARDS (continued)

Lot Type Grading Description

Est \$A



Ex Lot 365

365	C		VICTORIA: Small group with Niven 'CT Peters Boot Expert...Albert Park' storefront (some marks on back) then lovely range of <i>real photo</i> cards including 'Cape Otway Lighthouse', Portarlington group with 'Post Office' & 'St Patrick's Church' privately produced plus <i>Rose Series</i> 'Post Office', 'Main Street' and 'Boats at Pier' (steamer 'Courier' with sign for 'Melbourne & Geelong Steamers Daily'), Drysdale pair including 'G McCulloch Grocery' storefront & coach, Terang 'High St', Apollo Bay 'Wild Dog Creek', etc, condition generally fine. (25)	300
-----	---	--	---	-----



Lot 368

368	C	A	- 1908 AZ Clark/Wandong Cyanide Works <i>real photo</i> card of horse-drawn cyanide vat, VFU to GB.	100
-----	---	---	---	-----



Lot 369

369	C	A-	- 1911 <i>real photo</i> card 'Wave Breaking Over "Speculant" 10/2/11' showing the steel-hulled sailing ship aground on Cape Patten and being pounded by breakers, unused, couple of very minor blemishes. The "Speculant" rounded Cape Otway on 9.2.1911, but a heavy sea & south-easterly winds drove her ashore at 3am on 10.2; fortunately no passengers were on board and the crew were able to save themselves, walking 6 hours to reach Apollo Bay.	100
371	C	B/C	- FW Niven advertising cards for <i>Britannia Tie Manufacturers</i> , bumped corners & the stamp removed; <i>Cobb & Co</i> , soiled back & light crease, unused; and <i>Corden & Co Butchers & Bakers</i> , scarce 'PAID MELBOURNE/ 1/2 /10' cds. Rare cards. (3)	150

AUSTRALIAN PICTURE POSTCARDS (continued)

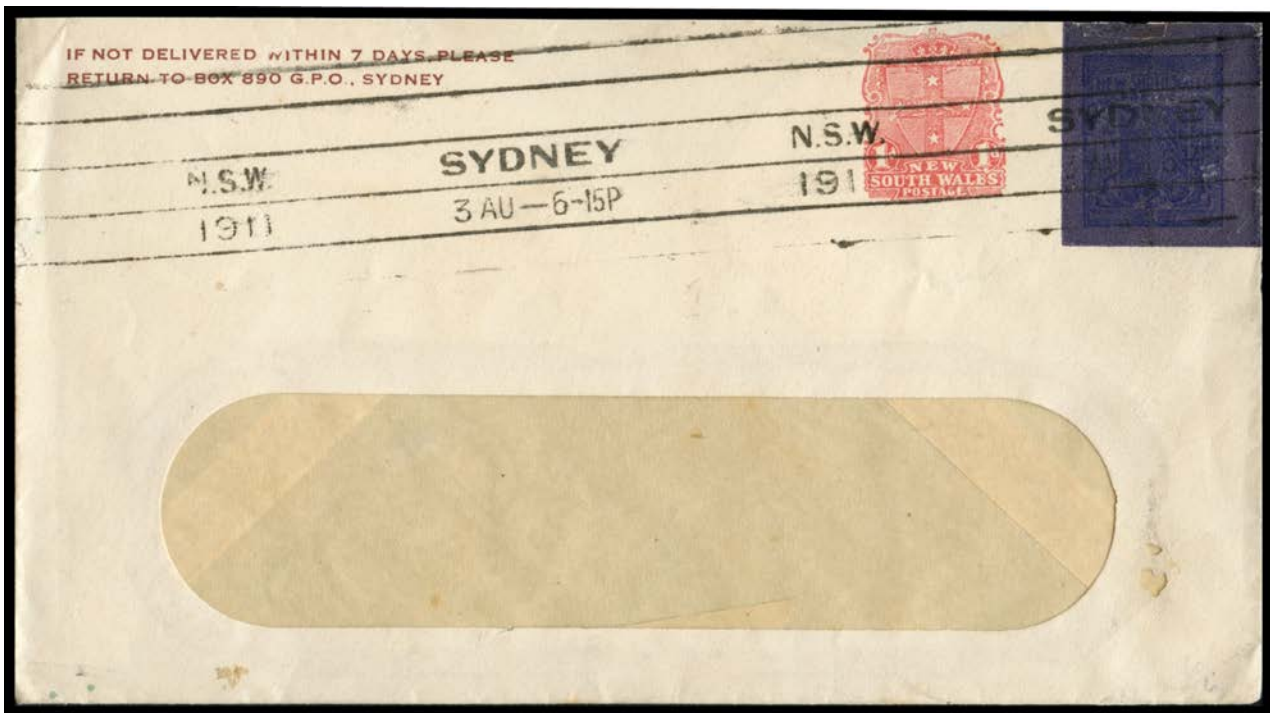
Lot Type Grading Description

Est \$A

**Ex Lot 372**

372 C - **APOLLO BAY:** Fabulous group of *real photo* cards mostly privately produced including WWI 'Peace Celebrations' poster advertising the "Apollo Bay Brass Band" plus two views of the local march with flag & band, two horse-drawn coaches 'On the Road to Apollo Bay', views of the township, pier, beaches & the Great War Memorial outside local church, 'Souvenir of Apollo Bay' with vignette views, also bridge 'Near Elliott River', 'Wild Dog Creek', 'Skene's Creek', etc, condition generally fine. Wonderful social history that would be impossible to replicate. (29)

500

NEW SOUTH WALES - Postal Stationery**Lot 450**

450 PS B **ENVELOPES - STAMPED TO ORDER:** 1911 window-envelope with 'CIVIL SERVICE STORES' imprint on the flap, QV 2d blue obliterated with black overprint - through which the 2d can be clearly seen - & Arms 1d red added, Sydney machine cancel of 3AU-1911, minor blemishes & a small part of the flap missing. **A great rarity & the first example we have seen.** [Until 30.4.1911, the intra-State rate was 1d, & 2d to Inter-State destinations. This was either printed with the 2d in error or was resubmitted by the user to be re-rated after 1.5.1911 from when the rate to all Australian & Empire destinations was reduced to 1d]

1,000^T

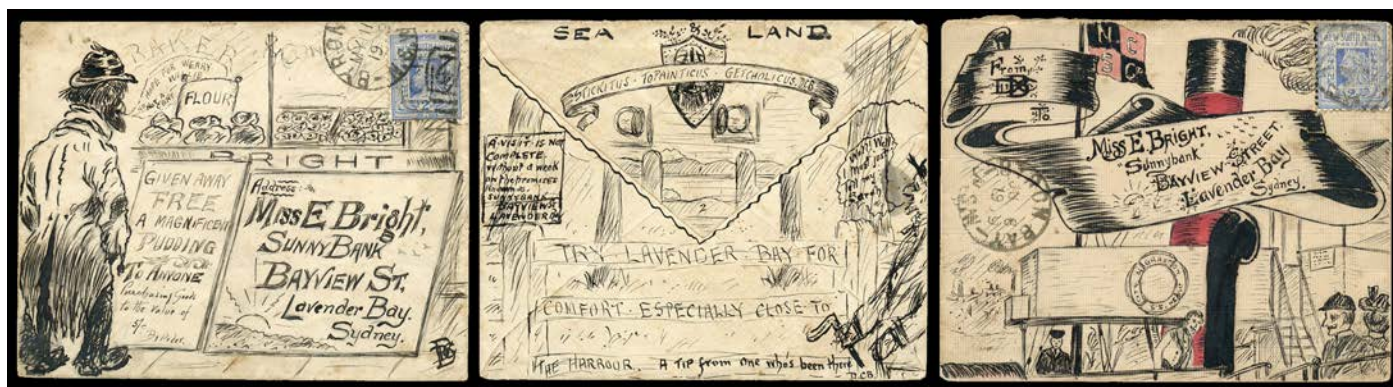
Lot Type Grading Description

Est \$A

NEW SOUTH WALES - Postal History**Lot 459**

- 459** C A- **1888** local usage of *Walter Akhurst & Co Printing Works* illustrated advertising cover with the firm's details on a 'blackboard' & Centennial 1d affixed alongside what appears to be an advertising label for the firm but which is actually printed on the envelope, Sydney duplex cancel, part of the flap removed otherwise superb! A rare item that, in our opinion, is **one of the most outstanding of all Australian advertising covers.**

500

**Ex Lot 463**

- 463** C B/C **1909** series of envelopes skilfully hand-illustrated in India ink - a few with highlights in red - all but two also adorned on the reverse, from 'DCB' at 'BYRON BAY' to "Miss E Bright/Sunnybank [one says "Sunnyside"/Lavender Bay' with the address incorporated into the designs, one with a glowing testimonial for *Sunnybank* on the reverse, some soiling/aging which thankfully is largely confined to the backs. A very appealing group. (9)

1,000

VICTORIA - Postal History

- 815 C **Modest little group** with some nice advertising covers including illustrated types for *Victoria Varnish Co* (closed tear), *Alcock & Co Billiard Tables* and *Frank Vial & Son Industrial Belts.* (16)

100

REST OF THE WORLD - GENERAL and MISCELLANEOUS LOTS

- 879 ***/OBC **Two albums** of oddments with a strong thematic tone, plus some booklets notably three different French 10fr Sower booklets with advertising (very fine), also AAT 'Ice Flowers' M/Ss in light-box (perhaps *Australia Post's* most ridiculous 'product'), 1990 *Columbus Anniversary* album with omnibus issues of Italy Spain Portugal & the USA including M/Ss, and a bundle of mostly ordinary covers including Malta 1904 with a light oval 'DISINFECTED/LAZARETE MALTA' h/s, etc. (100s)

500

- 887 ***/O/D **World accumulation** including Australia office mail, quantity sorted into envelopes, others still on pieces, also some mint in packets noted Fiji QEII 5/- 10/- & £1, West Germany Heuss blocks plus booklet, etc, condition mixed but many fine. Weighs 9kg. (100s)

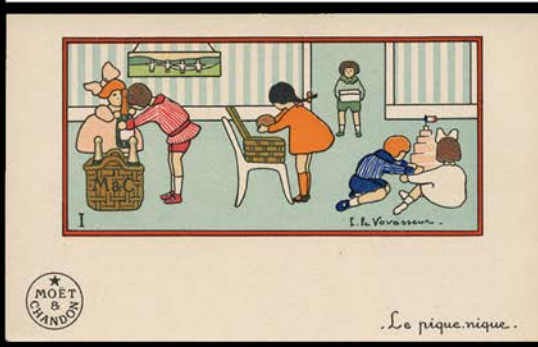
300

Lot Type Grading Description Est \$A

WORLD PICTURE POSTCARDS

See also Australian Picture Postcards - Lots 331 to 378.

928	C		Military and patriotic cards in box and <i>Lighthouse</i> album with slipcase, some Boer War period, mostly WWI with some modern reproductions and non-military with Qld 'Mount Morgan Gold Mines', NZ 1907 International Exhibition used, modern advertising cards, plus a few covers including 1928 'Graf Zeppelin' New York to Germany, 1940 'Internment Camp Tatura/POW Canteen' cover, etc, condition mixed. inspection recommended. (100+)	300
-----	---	--	--	-----



Ex Lot 948

948	C	A/A+	SUBJECTS - ADVERTISING: Very scarce group from France with <i>Moet et Chandon</i> set of 6 artist cards 'Le pique nique' by <i>L Le Vavasour</i> , plus <i>F Aninant</i> 'Doloricure' balm, <i>Gitanes</i> cigarettes, & <i>Poeles Godin</i> kitchen stoves (VFU; vendor paid \$100), very fine to superb. (9)	500
949	C	A/B	- Very scarce group from GB with <i>Baldwin & Partners</i> set of 6 Turkish rugs (minor blemishes), and artist cards <i>Sternol Motor Oil</i> 'It's Sternol does it' by <i>Hassall</i> and <i>Continental Motor Cycle Tyres</i> (unknown) both very fine, all unused. (8)	250

BRITISH WEST INDIES

1015	CL	A-	JAMAICA: 1942 airmail to Australia with KGVI ½d and Pictorials 2d 2½d 3d 4d 1/- & 2/6d, gorgeous <i>Coruba Jamaica Rum</i> advertising label on face, scarce 'CPS/16AP42/SYDNEY' cds in red overstruck with 'UNCLAIMED/SYDNEY' cds and returned, couple of minor edge faults.	200
------	----	----	--	-----

GERMANY



Ex Lot 1087

1087	C/CL		POSTAL HISTORY: Huge accumulation of 1930s-60s commercial mail never before on the market with much of the post-war material being inwards airmails to Australia, larger covers often with high-value frankings up to 3mk Heuss, brief inspection reveals 1930s scenic Postal Cards used (one with GB 2d Postage Due), airmails to UK with 2mk Lillienthal solo & with Berlin 'Rohrpost' pneumatic mail labels x2, 15pf Hindenburg reply card used from Italy to GB taxed, Allied Occupation 1948 Baden 10pf & 1mk registered to UK, postage paid in cash x3, West Berlin with range of 'BERLIN' overprints, Buildings & Bells frankings, quantity of West Germany & a little DDR, also meter cancels, advertising, etc, condition mixed but many fine. A 6kg 'goldmine'. (100s)	500
------	------	--	--	-----

Lot Type Grading Description

Est \$A

GREAT BRITAIN

Lot 1104

1104 B A- **BOOKLETS:** 1912 KGV 2/- (1/2d x12 + 1d x18) with 'INLAND RATES OF POSTAGE' Gibbons #BB3, characteristic minor stains around the staples otherwise very fine, Cat £1300.

400^T

Ex Lot 1105

1105 B A/A- - 1935 Silver Jubilee 2/- SG Spec #BB16 Editions 298-304 complete, and 3/- #BB28 Editions 294-297 complete, Cat £990. (11)

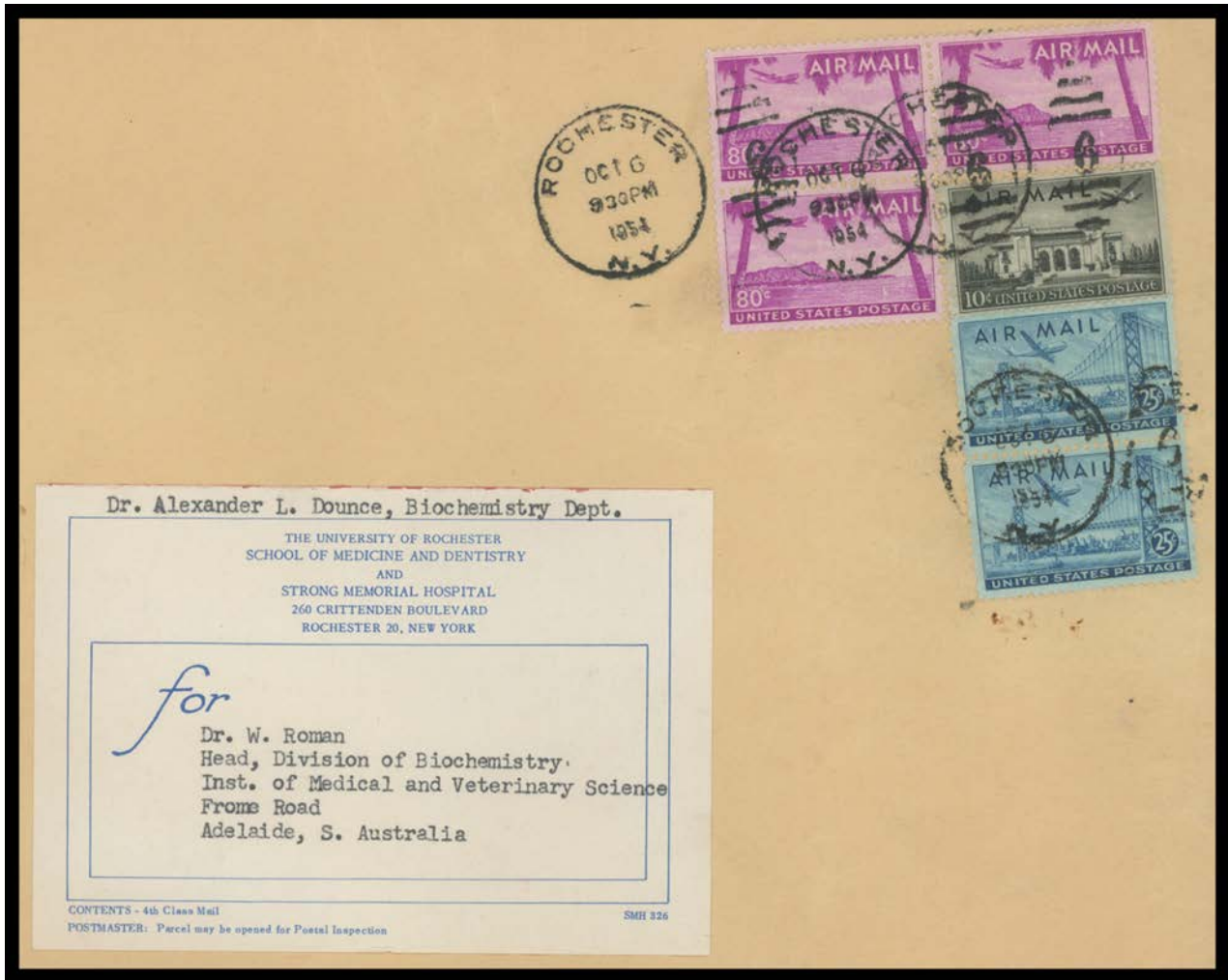
500

GREAT BRITAIN - Postal History

Ex Lot 1114

1114 C/CL **Accumulation of 1930s-60s commercial mail never before on the market** with much of the post-war material being inwards airmails to Australia, larger covers often with high-value frankings up to KGVII 10/- x3 and QEII Castle 10/- x3, brief inspection reveals 1940-41 'WOMEN'S INTERNMENT CAMP/ISLE-OF-MAN' cachets on cover from Port St. Mary and on postcards from Port Erin x2 (plus card without cachet), 1940 to Holland & 1941 to Greece both with 'NO SERVICE' cachets, other destinations including Japan & Russia, 1954 KGVII 10d solo on airmail newspaper wrappers x2, 1960 Wildings 1/3d with Australia Postage Dues 1d x6, some Regionals & Commemoratives frankings, also official mail, perfins, meter cancels, advertising, stationery, etc, condition mixed but many fine. Weighs 11kg. (many 100s)

500

UNITED STATES OF AMERICA - Postal History**Ex Lot 1375**

1375 C/CL

Mostly 1940s-60s commercial mail never before on the market with lots of inwards airmails to Australia, larger covers often with high-value frankings up to \$1 Prexies, brief inspection reveals 1937 registered 'AR' to Netherlands endorsed "Par Avion/Via SS Europa and Air Mail" with Globe 6c & Fourth Bureau 20c x2, 1951 Prexie 5c with 'CHARGE' label and GB Postage Dues 5d block of 18 on the back, 1954 airmail to Australia with Airs 10x & 25c x2 and 80c Diamond Head x3, plus another 80c on parcel wrapper, 1959 printed matter with Liberty 12c single (plus 1966 with 12c pair), 1961 registered airmail to Australia with Liberty \$1 block of 8, 1961 airmail **from Guam** to Singapore with Liberty 25c single (spotty), 1966 'MISSENT TO MANILA', also official mail, perfins, meter cancels, advertising, stationery, etc, condition mixed but many fine. Weighs 11kg. **NB:** the illustration is above Lot 1377. **(Qty)**

500