

Lot	Type	Grading	Description	Est \$A
-----	------	---------	-------------	---------

COMMONWEALTH OF AUSTRALIA - General & Miscellaneous Lots

6	O		Used accumulation with 1920s to modern collection on <i>Seven Seas</i> pages including a few Roos & KGV Heads, Comems with some 'OS' overprints noted KSmith pair CTO, Decimals reasonably complete with M/Ss & booklets also, quantity of extras including AAT and a few Australian Colonies, condition generally fine. Weighs 16kgs. (1000s)	250
---	---	--	--	-----



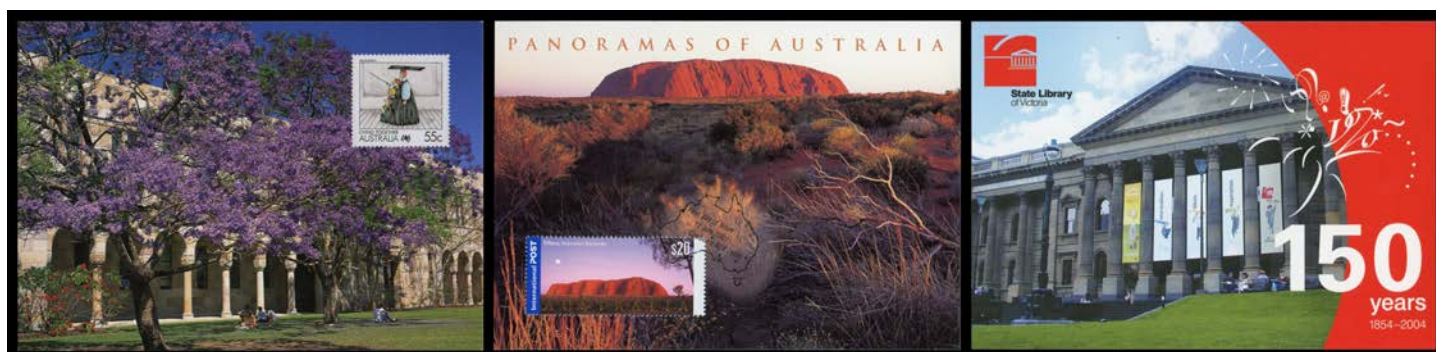
Ex Lot 9

9	**O		Collection in massive Scott album mostly mint commencing with a stray First Wmk £2 Roo !! (off-centre but very lightly mounted, Cat \$12,500; £6500), KGV Heads to 1/4d x3, Engraved 6d Kooka x2, 5/- Bridge (no gum), Robes, Arms, £sd Navigators (**), Decimals largely complete to 1986, etc, also Postage Dues mostly used but including 1907 Crown/Double-Lined 'A' mint set, etc, condition a bit mixed. (many 100s)	2,500
18	*OC		Odd little lot with a few better stamps including QE 3½d booklet pane used, six covers to the USA with 2½d Roos, 1918 registered to the USA with KGV ½d & 1d x5 with 'HAY ST WEST/WA' cds & 'HAY STREET WEST' h/s on R label, etc, condition variable.	100 ^T
23	**/OC		Accumulation of mint & used including Decimals ** with M/Ss, booklets, stamp packs, etc, also bundle of FDCs from Australia, Norfolk Island, GB, etc, plus <i>Gibbons</i> springback album & pages (as new), condition mixed but mostly fine. Weighs 11kg. (100s)	200
30	C/CLB		Carton of covers etc with some better usages & some postmark interest in the pre-decimals, later material includes lots of Priority Post covers, also a bundle of meters & slogan cancels, plus a bundle of Lord Howe Island booklets & philatelic covers, some GB covers & world <i>Framas</i> . In other words, it's a bit of a mishmash. (100s)	150 ^T

COMMONWEALTH OF AUSTRALIA - Decimal Issues

125	**BC	A	Array of booklets with some "prestige" types including <i>Leunig</i> x2, FDCs, commemoratives including 1970 Cook group with different cds & <i>Ausipex 84</i> 'silks', and an album of 'SPECIMEN' Overprints including blocks of 4, etc. (100s)	250
127	**		Accumulation including 1966-91 apparently complete ** on <i>Seven Seas</i> pages, larger blocks in album & loose, bundles of 1970s-90s stamp packs, some booklets, Yearbooks 1981-89, substantial face value, also a few used & covers, plus album of PNG and some GB, Canada, etc, condition generally fine. (100s)	500
128	**		Accumulation with 1966-86 collection in <i>Seven Seas</i> pages including Christmas 1971 block of 25, then 1980s-90s issues including in larger blocks in albums or still in standing order bags, M/Ss, booklets, etc, also bundles of Stamp Packs including 1966 AAT 'Japanese' version sealed, Yearbooks 1981, 1983-91 plus extra 1987, also some Territories, substantial face value, generally very fine. Weighs 28kg. (100s)	500
129	**B	A	1966-2000 collection in massive <i>Scott</i> album, apparently complete with M/Ss including 1999 Exhibition & 2000 Gold Medallist sheetlets, also many booklets, unmounted. High initial cost. (many 100s)	500
132	**B	A	1971-1990s+ collection in three cartons with lots of extras including blocks & strips on <i>Hagners</i> and in stamp packs, booklets & M/Ss with show overprints, <i>Framas</i> & CPS, etc, substantial face value. Weighs 32kgs. (1000s)	800
134	**B	A	1980-2014 accumulation in albums & <i>Hagners</i> including blocks, strips, M/Ss, sheetlets, P-Sheets, booklets, peel & stick, International Post, etc, substantial face value (stated by vendor as \$7,000+). Weighs 23kgs. (100s)	3,000
143	**BPS	A	2017 Melbourne Stamp & Coin Show Vietnam War M/S, Aust/Christmas Island <i>Year of the Rooster</i> booklet, Norfolk Island Waterfalls M/S & 'SEASON/PASS' Postal Card all overprinted for the <i>Patron's Club</i> & numbered 005/150, plus 'DAILY/PASS' Postal Cards x4.	100

COMMONWEALTH OF AUSTRALIA - Postal Stationery - Postal Cards



Ex Lot 172

172	PS/B	A	NVI Scenic Issues: Carton of these modern 'surprise' issues, so-called because many of them were issued in very low numbers with inadequate or zero notice from the marketing geniuses (genii ?) at <i>Australia Post</i> , or hidden in 'prestige' booklets. Loads of thematic content & Exhibition overprints plus many ignorant caption errors noted, some on annotated pages, some are CTO but the balance are valid for postage. A few keen enthusiasts tracked down issues in their States & exchanged between themselves. This is thus one of the largest known holdings. In years to come, many of these cards will be considered modern rarities. Buy now, before many people care, and put any duplicates on <i>ebay</i> . (many 100s)	500
-----	------	---	--	-----

Lot Type Grading Description

Est \$A

QUEENSLAND**Ex Lot 484**

484	QB	A	LOCAL STAMPS: c.1966 <i>Hayles' Magnetic Island</i> 5c blue-green complete booklet of 48 (four sheets of 12) & 20c complete booklet of 40 (five sheets of 8). The only such booklets seen by us. (2 items)	400
------------	----	---	--	-----

REST OF THE WORLD - GENERAL and MISCELLANEOUS LOTS

869	**/CPS	A	Pacific Islands on <i>Seven Seas</i> pages comprising Fiji from 1953, Pitcairn from 1940 & Samoa from 1962 all apparently complete unmounted up to mid-1990s including M/Ss, strips, blocks & a few extras, also some Cook Islands, Kiribati, Tokelau, etc, plus album of FDCs & stationery, lots of thematic interest. Weighs 15kgs. (100s)	400
879	**/*OBC		Two albums of oddments with a strong thematic tone, plus some booklets notably three different French 10fr Sower booklets with advertising (very fine), also AAT 'Ice Flowers' M/Ss in light-box (perhaps <i>Australia Post's</i> most ridiculous 'product'), 1990 <i>Columbus Anniversary</i> album with omnibus issues of Italy Spain Portugal & the USA including M/Ss, and a bundle of mostly ordinary covers including Malta 1904 with a light oval 'DISINFECTED/LAZARETE MALTA' h/s, etc. (100s)	500
886	**/*OC		Two cartons of mostly British Commonwealth in albums, stockcards and in packets, Australia includes Pre-paid PPCs x12 boxes and Frama FDCs; noted French New Hebrides 5c on 50c SG 53a mint (Cat £550, hinge remainder); QV and KGV 'SPECIMEN' overprints on Grenada, Trinidad & Tobago and St Lucia; Tonga 'Coin' stamps; <i>Harrison & Sons</i> 1, 2 & 4 colour stamp printing promotional cards, condition mixed. Weighs 22kg. (many 100s)	150

BELGIUM**Ex Lot 967**

967	**/*/OB		Extensive 1850s-1992 collection on <i>Schaubek</i> pages, the earliest mostly used with a few imperfs, 1863 Leopold I Perf set, 1893 Sunday Labels to 1fr, 1910 Exhibition Charity set plus some overprints, 1912 Albert I set (ex 2fr), some mint noted 1919 1fr orange, 1925 Stamp Anniversary set, 1928 Orval Abbey & TB Fund, reasonably complete from mid-1930s including 1936 Borgerhout M/S (thins) & Charleroi M/S **, 1940 Musical Foundation ** (SG states issued CTO only), 1952 Koekelberg Basilica M/S * and Cultural Fund * plus 4fr & 8fr with labels CTO, 1960 Refugee M/S **, early 1980s onwards unmounted, also booklets, sheetlets, Railway Parcel Stamps, Postage Dues, official overprints, etc, thematic interest, condition generally fine. Weighs 10kg. (100s)	600
------------	---------	--	---	-----

Lot Type Grading Description

Est \$A

GREAT BRITAIN

1095	**/*	A	1911-12 Downey Heads selection of shades - personal assessment required - & watermarks including Wmk Imperial Crown <i>Inverted Watermarks</i> SG 333Wi 335Wi & 336Wi, Redrawn ½d & 1d unmounted blocks of 4 each with <i>No Cross on Crown</i> pair SG 340a & 341a, Simple Cypher 1d <i>No Cross on Crown</i> SG 345a, 1d with the <i>Watermark Reversed</i> SG 345Wj and ½d & 1d booklet panes of 6, Multiple Cypher 1d <i>Imperforate</i> SG 346b (gum a bit aged), etc, generally very fine with some unmounted units, Cat £1850++ as mounted singles. (65)	600
------	------	---	---	-----

**Lot 1103**

1103	B	A+	BOOKLETS: 1904 KEVII 2/0½d (1d x24) SG Spec #BA1, ridiculously undercatalogued at £500. Pristine! [We say "ridiculously undercatalogued" because the 'Concise Catalogue' prices the panes at £300 x4 = £1200!]	600
-------------	---	----	--	-----

**Lot 1104**

1104	B	A-	- 1912 KGV 2/- (½d x12 + 1d x18) with 'INLAND RATES OF POSTAGE' <i>Gibbons</i> #BB3, characteristic minor stains around the staples otherwise very fine, Cat £1300.	400 ^T
-------------	---	----	---	------------------

**Ex Lot 1105**

1105	B	A/A-	- 1935 Silver Jubilee 2/- SG Spec #BB16 Editions 298-304 complete, and 3/- #BB28 Editions 294-297 complete, Cat £990. (11)	500
-------------	---	------	---	-----

Lot	Type	Grading	Description	Est \$A
-----	------	---------	-------------	---------

MIDDLE EAST

See also Turkey: Lots 1371 to 1373.

1139	**/*OC		ISRAEL: Collection on <i>Schaubek</i> pages, the earlies sparse but noted unmounted 1949 Assembly with full tab, 1950 UPU tete-beche pair, 1950 Tablet tab, 1952 Independence tab set, 1952 New Year tab set, 1953 Airs tabs (ex 750pr; 1000pr CTO), then reasonably complete unmounted with tabs, M/Ss, sheetlets, booklets, etc to 1992 including 1963 Hebrew Press sheetlet, thematic interest, some used in main collection and in separate album plus a few FDCs, condition generally fine. Weighs 10kg. (100s)	300
------	--------	--	--	-----

NEW ZEALAND

1307	**BC	A	1953-95 QEII Collection on <i>Seven Seas</i> pages apparently complete unmounted with Health M/Ss, Officials, 1958 '2d' overprint on 1½d Stars, etc, plus Yearbooks 1984 & 1985, a few stamp packs, booklets, FDCs, also Ross Dependency, substantial face value in modern issues, unmounted. Weighs 10kgs. (100s)	500
------	------	---	--	-----