

Lot	Type	Grading	Description	Est \$A
-----	------	---------	-------------	---------

COMMONWEALTH OF AUSTRALIA - Commemorative Covers/Datestamps

186	CL	A	1940 Fahnstock South Sea Expedition (Oct 29) cover to USA with huge Expedition cachet & 'YACHT DIRECTOR II' both in blue plus 'Great Barrier Reef/...' h/s in red, AIF 3d tied by 'GLADSTONE/29OC40/QLD' cds, Brisbane 'NOT/OPENED BY/CENSOR' h/s in violet. [On 18.10.1940, the boat was wrecked near Gladstone & the Expedition abandoned]	150
-----	----	---	---	-----

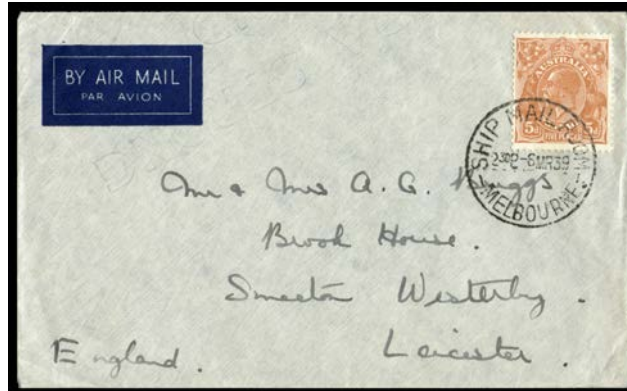
COMMONWEALTH OF AUSTRALIA - Aerophilately & Flight Covers



Ex Lot 272

272	C		1934 MacRobertson Air Race annotated group including per <i>Scott & Campbell-Black</i> (Cat \$1250) registered back to GB, per <i>Roscoe Turner</i> , and per <i>Hewitt Kay & Stewart</i> signed "Cyril E Kaye", then a group per 'Uiver' including intermediates & return to Holland plus propaganda printed on reverse of unseparated Dutch 'POSTGIRO' form (unused), plus 1934 (Dec) 'Uiver' crash cover & planned return cover with 'UIVER/BATAVIA-C' cds but carried per 'Ysvogel', generally fine to very fine. A good lot. <i>Ex Neil Russell.</i> (13 items)	750 ^T
-----	---	--	---	------------------

COMMONWEALTH OF AUSTRALIA - Postal History



Lot 304

304	C	A	1938-39 Empire Air Mail Scheme EAMS cover to GB with KGV 5d tied by 'SHIP MAIL ROOM/6MR39/MELBOURNE' cds. Nothing to look at but this is only the third cover identified as having been carried per 'Capella' which was wrecked on landing at Batavia AAMC #843a, Cat \$900. NB: the plane was flying from Australia, not from GB as noted in the AAMC: see <i>Proud 'Intercontinental Airmails Vol II: Asia & Australasia'</i> at page 431 where it is stated 'On 11 March <i>Capella</i> struck a sunken wreck while landing at Batavia...'	1,500
319	CPS		1975 Cyclone Tracy disaster mail with 'DARWIN/POSTAGE CONCESSION' h/s x5 (two with 'PAID' cds in red, one irregularly cancelling 5c stamp, & one with 'Certified Mail' label; very scarce), unstamped without the cachet x5 (one OHMS with huge 'PRINTED MATTER' h/s), condition variable. (10)	200

Lot Type Grading Description

Est \$A

AUSTRALIAN PICTURE POSTCARDS

See also World Postcards Lots 924 to 960.



Ex Lot 362

362 C **SUBJECTS LIGHTHOUSES:** Mostly pre-WWII batch with strength in NSW & Victoria coastal installations, also noted Port MacDonnell (SA), Magnetic Island (Qld) & Rottnest Island (WA), etc, some *Rose & Valentine* types & some amateur *real photo* cards, generally fine to very fine. (68)

500



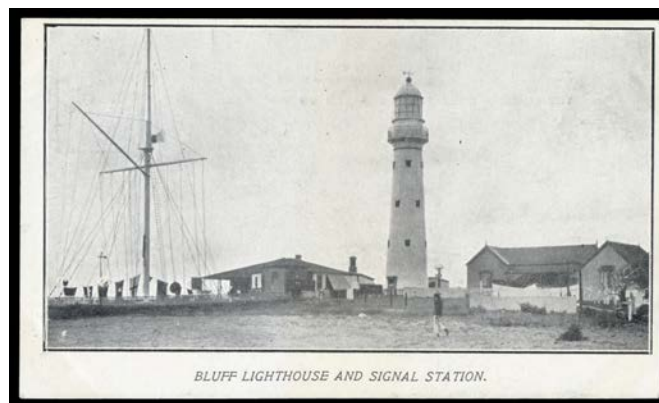
Ex Lot 370

370 C **VICTORIA: ADVERTISING:** Very scarce group including Boer War patriotic with *WC Peacock & Brother* overprint for the 1900 *Melbourne Royal Agricultural Show*, *Yalart Cattle & Horse Stud* x2, *Australian Mercantile Wool Brokers* (premises), *Sunshine Harvester* ('A Sunshine Traction Ploughing Plant'), *Shell Motor Oil* (the Newport Refinery), *Gant Motors* (*Ford Dealers*) with *Double Overprint* for 'Care of your FORD Car' lecture, etc, also 1905 *Ballarat Tramways* PPC-size 3d ticket postally used to New Zealand (faults), most are fine to very fine. [See also **Lot 360**] (10)

350

WORLD PICTURE POSTCARDS

See also Australian Picture Postcards - Lots 331 to 378.



Ex Lot 955

955 C **SUBJECTS LIGHTHOUSES:** Mostly pre-WWII batch with strength in GB including offshore & Channel Islands, USA, France & other Europe, New Zealand & Egypt, also noted Bermuda Cuba & Haiti, some *Undivided Backs* & *real photo* types, generally fine to very fine. (100 approx)

500

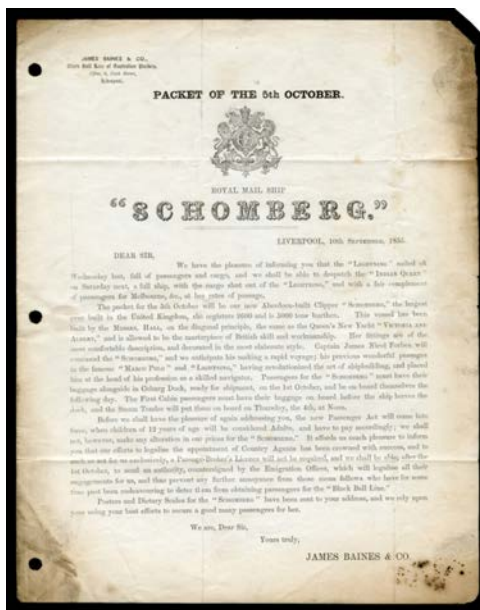
956 C - Five & a half albums of moderns including some reprinted older cards with strength in Australia, GB, USA, France & other Europe, New Zealand & Egypt, generally very fine. Weighs 12½kg. (100s)

100

Lot Type Grading Description

Est \$A

GREAT BRITAIN - Postal History



Lot 1116

1116 C C **1855** (Sep 10) *James Baines & Co* entire being a printed advice headed 'PACKET OF THE 5th OCTOBER/ROYAL MAIL SHIP/SCHOMBERG', *Stars 1d* tied by very fine 'LIVERPOOL/R 1' spoon-duplex, 'WIGAN' arrival b/s in green, some soiling & file-punched away from the address flap. [The notice states '...our new Aberdeen-built Clipper *Schomberg*, the largest ever built in the United Kingdom...& is allowed to be the masterpiece of British skill & workmanship...*Captain James Nicol Forbes* will command...& we anticipate his making a rapid voyage...at the head of his profession as a skilled navigator...'. On 27.12.1855, *Schomberg*, on her maiden voyage, was wrecked off Cape Otway (Victoria)]

2,000



Lot 1117

1117 C B - *Germain Nicholson* cover to Victoria with a very attractive Embossed 1/- green (margins good to large, 11mm scissor-cut at lower-right just intrudes on the design) tied by superb 'LIVERPOOL/4OC/1855/ H1 - 466' duplex & oval 'L /OC4/ A ' b/s, '1d' in red for postage due to Victoria, 'SHIP LETTER/FREE/DC28/1853/GPO VICTORIA' arrival b/s in red, minor blemishes & light soiling. Most attractive. Carried per *Black Ball Line "Schomberg"* on her maiden voyage, departed Liverpool 6.10.1855, ran aground off Cape Otway 27.12.1855, passengers & mail transferred to "Queen", arrived Melbourne 28.12.1855. *Ex JRW Purves and Brian Peace*. The finest & most attractive of **only five covers recorded from this famous wreck**: #1 in *Brian Peace's Census* & illustrated by him at page 62.

5,000

Lot	Type	Grading	Description	Est \$A
-----	------	---------	-------------	---------

NORFOLK ISLAND - Postal History

1320	PS	C	1968 GB 6d Aerogramme to "Chief Postmaster/Norfolk Islands/..." with significant charring especially on the reverse & corner fault at L/L, with Australian <i>PMG's Department</i> roneo'd letter of 7.5.1968 advising of damage to mail due to the aircraft carrying it having crashed at <i>Heathrow Airport</i> . Rare & full of character. (2 items)	500
------	----	---	--	-----
