

Lot Type Grading Description

Est \$A

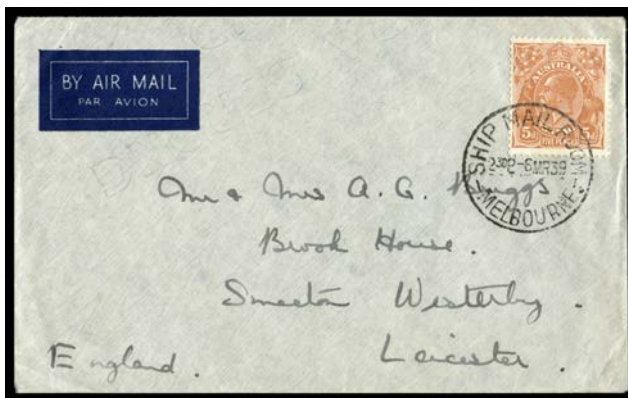
COMMONWEALTH OF AUSTRALIA - Postal History



Ex Lot 303

303 C/CL **1938-39 Empire Air Mail Scheme (EAMS) collection** with a couple of pre-scheme covers at 1/6d, British 'STAGE 3' pamphlet & leaflet re extension of service to Australasia, first day of service from GB including to New Guinea, New Hebrides, Fiji & Nauru, and from Australia including to Singapore & Ulster, one with huge commemorative cachet in violet, about 20 commercial covers from Australia with various frankings & a rare commercial usage of a PPC at the 3d postcard rate, also a commercial cover from Papua to GB, etc. *Ex Neil Russell.* [The illustration is above Lot 304] **(50+)**

500^T



Lot 304

304 C A - *EAMS* cover to GB with KGV 5d tied by 'SHIP MAIL ROOM/6MR39/MELBOURNE' cds. Nothing to look at but this is only the third cover identified as having been carried per 'Capella' which was wrecked on landing at Batavia AAMC #843a, Cat \$900. **NB:** the plane was flying **from** Australia, not from GB as noted in the AAMC: see *Proud 'Intercontinental Airmails Vol II: Asia & Australasia'* at page 431 where it is stated 'On 11 March *Capella* struck a sunken wreck while landing at Batavia...'

1,500