

Lot Type Grading Description

Est \$A

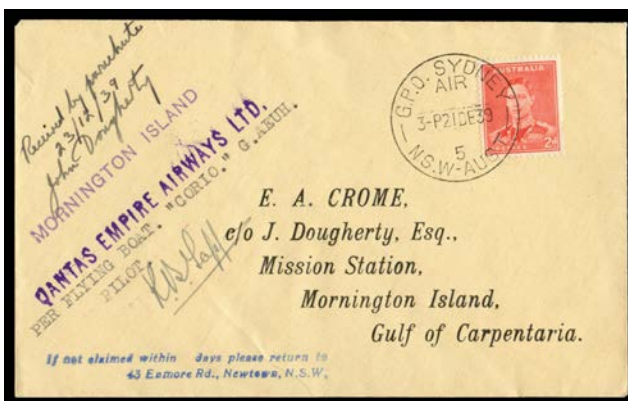
COMMONWEALTH OF AUSTRALIA - Aerophilately & Flight Covers



Ex Lot 275

275 C/L A/A- **1949** (Dec 19) TAA Christmas land-plane flight to the mission at Mornington Island signed by the pilot & with TAA roneo'd letter re the flight, a different TAA cover from Cloncurry & return, and a privately prepared cover for the flight, also an unlisted return flight cover appropriately endorsed but cancelled at 'TENNANT CREEK/21JA50/NT'. Apart from the first item, these are the only examples we have seen. *Ex Neil Russell.* [Also includes 1976 letters between *Neil Russell & Ernie Crome* with comment on the Christmas flights.] (5 items)

500^T



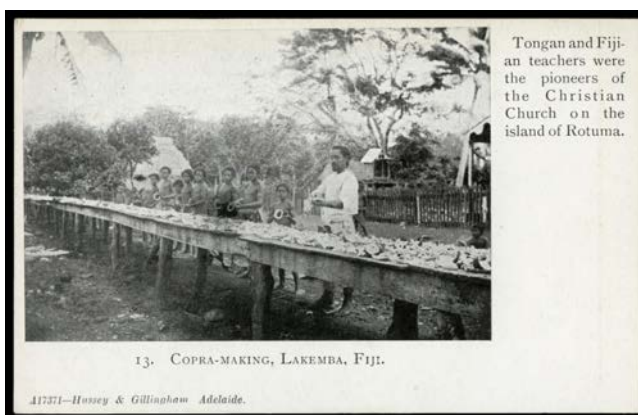
Ex Lot 276

276 C** A **MORNINGTON ISLAND PARACHUTE MAILS:** Qantas Christmas flights 1939 ex Sydney, 1941 ex Sydney & Brisbane, 1942 ex Sydney & Brisbane, 1943 ex Sydney & Brisbane, 1946 ex Sydney, 1947 ex Sydney & 1948 ex Sydney, all with appropriate labels &/or autographs, plus an unmounted set of the six Qantas labels. *Ex Neil Russell.* (16 items)

500^T

WORLD PICTURE POSTCARDS

See also Australian Picture Postcards - Lots 331 to 378.



Ex Lot 933

933 C **FIJI:** Interesting group of missionary cards including *Hussey & Gillingham (Adelaide)* types x12, generally fine to very fine (34); also *Zieher* PPC of Fijian stamps, 1922 registered cover to USA, a couple of WWII items & some very ordinary Postal Cards x18 including 1½d fine used to Italy in 1901. (56)

400

940 C C **NEW GUINEA:** c.1914 'Similar Medicine being served out to the Germans who flogged Rev Mr Cox at Rabaul...', minor faults.

50

NEW GUINEA - German (Deutsch) New Guinea - Postal History**Lot 1170**

1170 PS B **1905** usage of Luxembourg (10c+)10c reply-half with 'LUXEMBOURG-VILLE' cds to a Catholic missionary at "Kieta - Bougainville/Iles Salomon/Oceanie" with full message in French, light bend at U/L. **An extraordinary origin-destination item.** [Bougainville, while geographically part of the Solomons Archipelago, was part of German New Guinea]

300

NEW GUINEA - Mandated Territory - Aerophilately & Flight Covers**Lot 1299**

1299 C B **1939** (April 21) Adelaide-Wau Delivery Flight #P145a endorsed "Carried in the/Fokker Universal/Monoplane..." & signed by the pilots "Ray Parer" & "W Schafhausen", Salamaua transit b/s & registration cachet on the face, Bulolo 3d & 5d cancelled on arrival at Wau, minor blemishes, Cat \$1250. AAMC states only three covers were carried, one each to Adelaide, Alexishafen & Wau. [The plane was being delivered to the Catholic mission at Madang]

600^T