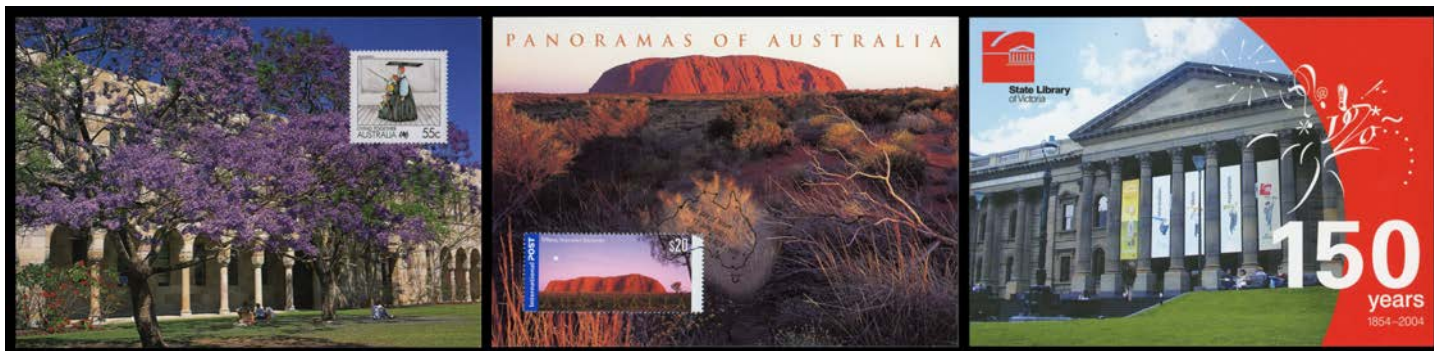


Lot Type Grading Description

Est \$A

COMMONWEALTH OF AUSTRALIA - Postal Stationery - Postal Cards



Ex Lot 172

172	PS/B	A	<p>NVI Scenic Issues: Carton of these modern 'surprise' issues, so-called because many of them were issued in very low numbers with inadequate or zero notice from the marketing geniuses (genii ?) at <i>Australia Post</i>, or hidden in 'prestige' booklets. Loads of thematic content & Exhibition overprints plus many ignorant caption errors noted, some on annotated pages, some are CTO but the balance are valid for postage. A few keen enthusiasts tracked down issues in their States & exchanged between themselves. This is thus one of the largest known holdings. In years to come, many of these cards will be considered modern rarities. Buy now, before many people care, and put any duplicates on <i>ebay</i>. (many 100s)</p>	500
------------	------	---	---	-----

GREAT BRITAIN

1092	**	A	<p>1952-2019 collection in two cartons with strength from 1985 with Castles to £5, blocks of 4 with <i>Machins</i> to £5, NVI '1st' and '2nd' class, 'Signed For', 'Large' and 'Worldwide' self-adhesives, 'Smilers', 'Special Occasion', Commemorative blocks, sheetlets and part-sheets, 'Post and Go', M/Ss, stamp packs, 'prestige' booklets (53), and Regionals. High face value, bring a calculator. Weighs 20kg. (many 100s)</p>	5,000
1093	OC*/**		<p>Mint and used collection to 2018 in stockbooks in two cartons, includes some late QV, a few covers including KGV PUC set to 2½d Control 'K29' blocks or pairs on registered covers (6), QEII pre-decimals include <i>De La Rue</i> 10/- Castles (**), <i>Phosphor</i> issues, decimal <i>Machins</i>, Castles to £5, NVI '1st' and '2nd' class, 'Signed For', 'Large' and 'Worldwide' self-adhesives, 'Smilers', commemorative blocks, 'Post and Go', Regionals, some Channel Islands and Postage Dues, condition mixed. (Qty)</p>	400
1106	C	A/A-	<p>FIRST DAY COVERS: 1960-2019 collection in two cartons, appears to be complete including London 2012 Gold Medallists, NVIs, <i>Machins</i>, M/Ss, 'Peel & Go', and Regionals, most addressed to Australia. (100s)</p>	400

MAURITIUS



Ex Lot 1130

1130	*/**		<p>Quality collection with NVI (6d) vermilion block of 4 (**) & (1d) blue U/R corner block of 36 (many units **), 6d purple-slate x2, 1862 6d green imperf plate proof pair (**), 1863 3d dull red pair & 'CANCELLED' 5/- x2, 'One Shilling' on 5/- 'CANCELLED', '38 CENTS' on 9d, CC 4c orange, CA 2c Venetian red block of 4 (**) & 15c chestnut block of 18 (**), 1891 'TWO CENTS' on 38c <i>Double Surcharge</i> SG 121b, 1900-05 Arms set, 'Postage & - Revenue' Overprints set, KGV various to 10r x2, 1925 Surcharges 'Specimen' set, Jubilee 'SPECIMEN' set (**), KGV I - papers not checked by us - with shades to 10r x3 including 25c '<i>MAIJRITIUS</i>' <i>Flaw</i>, KGV I Pictorials x2 sets, etc, generally very fine, Cat £4500++. A very appealing lot. (few 100)</p>	2,400
-------------	------	--	--	-------