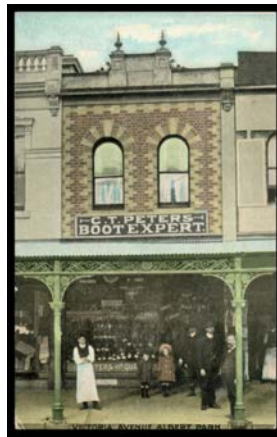


Lot Type Grading Description

Est \$A

**AUSTRALIAN PICTURE POSTCARDS**

See also World Postcards Lots 924 to 960.

**Ex Lot 365**

365	C		<b>VICTORIA: Small group</b> with Niven 'CT Peters Boot Expert...Albert Park' storefront (some marks on back) then lovely range of <i>real photo</i> cards including 'Cape Otway Lighthouse', Portarlington group with 'Post Office' & 'St Patrick's Church' privately produced plus <i>Rose Series</i> 'Post Office', 'Main Street' and 'Boats at Pier' (steamer 'Courier' with sign for 'Melbourne & Geelong Steamers Daily'), Drysdale pair including 'G McCulloch Grocery' storefront & coach, Terang 'High St', Apollo Bay 'Wild Dog Creek', etc, condition generally fine. <b>(25)</b>	300
-----	---	--	--	-----

**QUEENSLAND - Postmarks**

492	C	A	Box of 1970s-2000s mostly colour photographs of Queensland Post Offices, all different & identified on the reverse, many closed. <i>Ex John Webster, Alec Gavin &amp; Ken Smithies</i> . Terrific boost for any postmark collection.	200
-----	---	---	--	-----

**OFFICIAL STAMPS - DEPARTMENTAL OVERPRINTS**

This is the tenth significant offering of these fascinating stamps that we have been privileged to present, including the collections of Les Munn (15.5.2004), "Sir Humphrey" (Brian Farmer, 8.10.2005), Harry Lower (12.5.2007), Victor Bullock (1.9.2007), Frederick Hall (9.2.2008), Rodney Attwood (23.9.2011) and 'Novocastrian' (unnamed, 14.11.2014). All of these sales are available for your inspection on our website. The 'Tamiami' Collection is the best of them all, with many mint stamps including from the Rev James Mursell Collection sold in London in 1964, & so offered for the first time in more than half a century. Those stamps were acquired by F Houston Wynn, longtime editor of the SAS/Oceania journal 'The Informer'. 'Tamiami' acquired Hugh Wynn's collection intact. However, only where we are certain of that provenance have we stated 'Ex Houston Wynn'. Bidders should be mindful that defective sheets were often used for overprinting, resulting in many Departmentals being poorly centred, often exhibiting separation faults, irregular or trimmed perforations, etc. Fine examples are thus the exception rather than the rule: those graded 'B' or even 'C' are generally at least average quality for the particular type. It should also be noted that Butler's rarity ratings are severely compromised by his inclusion of unspecified numbers of stamps from the Royal Collection & other institutionalised holdings. Until Stanley Gibbons properly lists and prices these stamps, they will remain grossly undervalued. Our estimates are conservative, based on previous results - including the 2018 sale in Switzerland of the exceptional 'Besancon' Collection - to which attention is drawn where appropriate. NB: this offering includes many stamps that are at least the equal of the 'Besancon' examples, and many others that were absent from 'Besancon'.

**Lot 665**

665	*	A	<b>POST OFFICE:</b> Blue 'P.O.' Rouletted 2d vermilion, large-part o.g. Rated RRRRR. <i>Ex Rev James Mursell. RPSofV Certificate</i> (2019). [Superior to the 'Besancon' example that sold for SFr907]	1,000 <sup>T</sup>
-----	---	---	--	--------------------

**VICTORIA - Postmarks**

802	C	A	<b>Box of 1960s-80s mostly black &amp; white photographs</b> of Victorian Post Offices, all different & identified on the reverse, many closed even at that time. <i>Ex John Webster, Alec Gavin &amp; Ken Smithies</i> . Terrific boost for any postmark collection. <b>(400+)</b>	500
-----	---	---	---	-----