

Lot	Type	Grading	Description	Est \$A
-----	------	---------	-------------	---------

NEW SOUTH WALES - Postal History

461	C	B	1900 (Feb 7) Boer War cover with straight-line 'SS EURYALUS' ship's cachet & endorsed "2nd Vict Contingent/Wray Chaplain/for Col Price CC", to Sydney with CofGH 1d tied by Cape Town squared-circle, Sydney arrival b/s of MR2/00, opened a bit roughly with small repair at upper-right. Rare.	350 ^T
-----	---	---	---	------------------

QUEENSLAND - Postal History

500	CL	B	1865 (Jan 10) cover to London with extremely rare franking of No Wmk 6d yellow-green SG 27 block of 4 (one unit defective) tied by 'QL'-in-Rays cancels, 'SHIP-LETTER/=BRISBANE=' cds overstruck with London arrival of MR23/65, three vertical folds clear of the stamps & minor soiling.	500 ^T
-----	----	---	--	------------------

PHILATELIC LITERATURE

922	L	A	AUSTRALIAN COLONIES: 'Australia - New Zealand - UK Mails Volume 1 to 1880' (2nd Edn, 2011) & '...Volume 2, 1881-1900' (2011) by <i>Colin Tabcart RDP</i> . Essential references. (2)	100
-----	---	---	---	-----

WORLD PICTURE POSTCARDS

See also *Australian Picture Postcards - Lots 331 to 378*.

959	C	A-	TONGA: 1909 <i>real photo</i> "Laka Laka a native dance - Tonga" (at least 51 Tongans in the shot) with 'Dufty/ Photographer/TONGA SS' cachet on reverse, from 'VAVAU' to Auckland.	75
-----	---	----	--	----

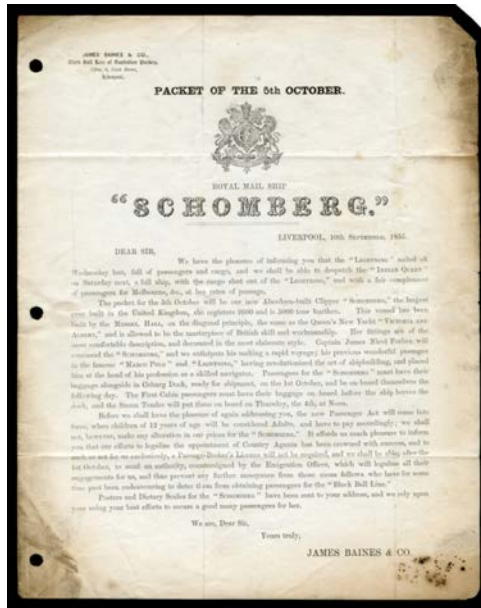
BRITISH AFRICA

979	PS	B	NIGERIA: Lagos: 1894 1d Postal Card commercially used to Switzerland endorsed "Lagos/28/1/94" on face in red, posted on German <i>Woerman Line</i> steamer & with boxed 'AUS/WESTAFRIKA' cancel applied at Hamburg & another very fine strike alongside, 'BERN/23 II 94' arrival on face where taxed with "Fr 1.15", a couple of minor creases.	250
-----	----	---	--	-----

ETHIOPIA**Lot 1055**

1055	C	A	1905 Michel (Harrar) PPC ('Sur la route de Guildessa') to Austria with scarce combination franking of Ethiopia '10' on ½g red pair tied by '.../ADDIS ABABA' cds & French Somali Coast 10c tied by '.../DJIBOUTI' cds, octagonal 'LA REUNION A MARSEILLE 10c' d/s, on arrival at Troppau readdressed to 'GRAZ' (barred arrival d/s), guarantee signature "Scheller" of <i>Pascal Scheller</i> at L/R. [NB: the illustration is above Lot 1060]	750 ^T
-------------	---	---	---	------------------

GREAT BRITAIN - Postal History



Lot 1116

1116 C C

1855 (Sep 10) James Baines & Co entire being a printed advice headed 'PACKET OF THE 5th OCTOBER/ROYAL MAIL SHIP/SCHOMBERG', Stars 1d tied by very fine 'LIVERPOOL/R 1' spoon-duplex, 'WIGAN' arrival b/s in green, some soiling & file-punched away from the address flap. [The notice states '...our new Aberdeen-built Clipper Schomberg, the largest ever built in the United Kingdom...& is allowed to be the masterpiece of British skill & workmanship...Captain James Nicol Forbes will command...& we anticipate his making a rapid voyage...at the head of his profession as a skilled navigator...'. On 27.12.1855, Schomberg, on her maiden voyage, was wrecked off Cape Otway (Victoria)]

2,000



Lot 1117

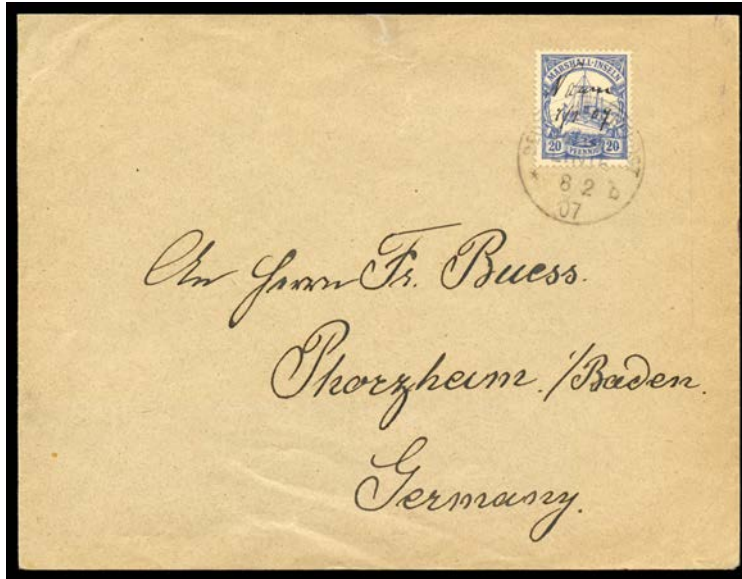
1117 C B

- Germain Nicholson cover to Victoria with a very attractive Embossed 1/- green (margins good to large, 11mm scissor-cut at lower-right just intrudes on the design) tied by superb 'LIVERPOOL/4OC/1855/ H1 - 466' duplex & oval 'L /OC/4/ A ' b/s, '1d' in red for postage due to Victoria, 'SHIP LETTER/FREE/DC28/1853/GPO VICTORIA' arrival b/s in red, minor blemishes & light soiling. Most attractive. Carried per Black Ball Line "Schomberg" on her maiden voyage, departed Liverpool 6.10.1855, ran aground off Cape Otway 27.12.1855, passengers & mail transferred to "Queen", arrived Melbourne 28.12.1855. Ex JRW Purves and Brian Peace. The finest & most attractive of only five covers recorded from this famous wreck: #1 in Brian Peace's Census & illustrated by him at page 62.

5,000

Lot Type Grading Description

Est \$A

NAURU - Postal History**Lot 1147**

1147 C A- 1907 cover to Germany with manuscript "Nauru/7 2 07" on Marshalls 20pf overstruck with 'DEUTSCHE-/SEEPOST/JALUIT/LINIE' cds, 'PFORZHEIM' arrival b/s. Ex John Darnell & William Pate.

500^T