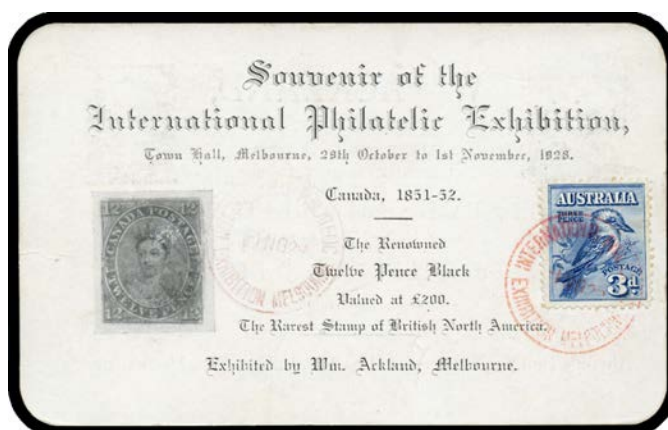


Lot	Type	Grading	Description	Est \$A
-----	------	---------	-------------	---------

COMMONWEALTH OF AUSTRALIA - First Day Covers

1427	CPS	A	1980s-2015 duplicated accumulation including high denominations, International Post, Framas, Self-adhesives, M/Ss and AAT in three cartons, PSEs used & unused, also packets of unused Aerogrammes, Maxi-cards, International Post NVI Postal Cards, <i>Seven Seas</i> 2001-08 hingeless album with slipcase, <i>Americas Cup</i> Gift Pack, etc. Weighs 26kg. (Qty)	300
1428	C	A/B	1960s-90s FDCs & PSEs including 17 albums of Australian Antarctic Territory noted Base Cancels & autographed covers, commemorative cancels, thematic interest, some duplication, condition generally fine. Weighs 43kg. (100s)	200
1429	C	A	1977-2009 complete unaddressed including high values, Framas and Joint Issues, also 1987 Americas Cup gift pack, 1965-2007 Aerogrammes unused and First Day of Issue cancels plus 200+ Worldwide PPCs sent to Australia. Weighs 11kg. (100s)	150
1430	CPS		Two cartons containing album 1956-70 <i>Sigma</i> FDCs, also unaddressed decimals to 1999 with special cancels including Framas, PSEs, Counter-Printed, Maximum Cards, AAT, CTO 'Postage Paid' envelopes (to 250g) including International Post and Aerogrammes, etc, and some CTO sets and commercial covers. Weighs 18kg. (100s)	250
1431	C		1930s-60s duplicated range including 1937 NSW Sesqui-Centenary set on <i>Northern Series</i> multi-coloured covers x2, 1953 Produce Food strips on <i>AWCO</i> & other covers x20 (some with both strips on one cover), 5/- Cattle on <i>Royal</i> cover registered airmail to Switzerland, £sd Navigators on <i>Wesley</i> covers x3 sets plus extras, bundle from First Decimals series, etc, condition variable. (300+)	200



Ex Lot 1432

1432	C		Hoard in two cartons from 1928 <i>W Ackland</i> souvenir card with Kookaburra 3d tied by Exhibition cds in red, through to early Decimal period noted 1970 'Small Cook', large range of different cachet makers & cover producers including 1958-64 <i>Guthries</i> x10+, Navigators £sd set on four generic Post Office covers, etc, also some flight covers, numerous registered including provisional & commemorative R labels, some pictorial cds, a few AAT Base Cancels, some world-wide also, condition generally fine. Weighs 25kg. (100s)	500
1433	C	A	1929 Airmail 3d plus KGV 1½d tied to airmail cover endorsed "Date of Issue" by 'CHARLEVILLE/20MY29/QUEENSLAND' cds ACSC #134y, Cat \$225.	100
1434	C	A-	1931 Airmail 6d sepia tied to plain cover by 'GREENWICH/4N031/NSW' cds ACSC #144y, a couple of minor blemishes, Cat \$800.	300



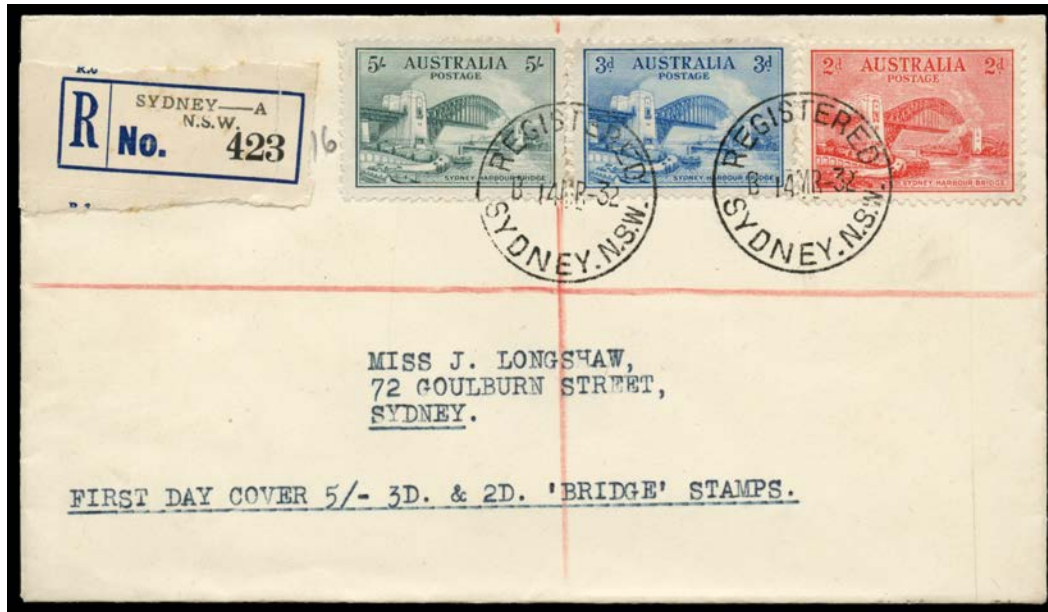
Lot 1435

1435	C	B	1931 Airmail 6d 'OS' overprint plus 'normal' 6d and KGV 2d tied to Australia-England flight cover AAMC #222 by 'SHIP MAIL ROOM/17N031/MELBOURNE' cds ACSC #144(OS)y, a few blemishes, Cat \$2000. [The stamp was placed on sale to the public on 17.11.1931]	600
------	---	---	---	-----

COMMONWEALTH OF AUSTRALIA - First Day Covers (continued)

Lot Type Grading Description

Est \$A



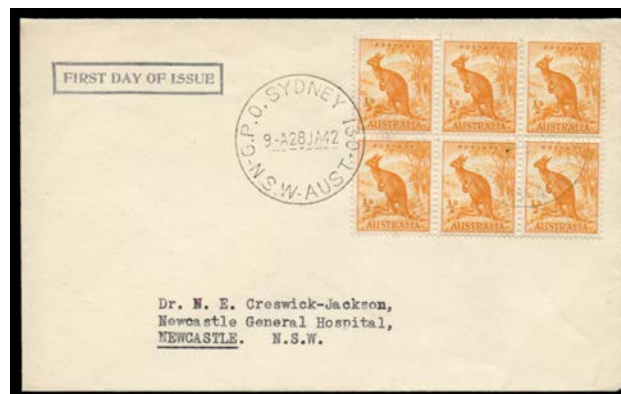
Lot 1436

1436	V	A B1	1932 Sydney Harbour Bridge 2d Typo, 3d & 5/- tied to plain First Day Cover by 'REGISTERED/14MR32/SYDNEY NSW' cds, damaged blue & black R label & a tonespot above the 2d otherwise superb!, Cat \$5000. The illustration is above Lot 1440.	2,000
1437	C	B	1934 Hermes No Watermark 1/6d plus Macarthur 3d tied to plain cover by 'REGISTERED/1-DEC34/HOBART' cds ACSC #161y, sent airmail to England with blue/black registration label, a few aging marks, Cat \$500.	250
1438	C	A	1935 Silver Jubilee 2d 3d & 2/- tied to Mitchell cover by 'REGISTERED PERTH/-2MAY35/WESTN AUSTRALIA' cds ACSC #168y, blue 'Metropolitan Markets/WEST AUSTRALIA' registration label, Air Mail etiquette endorsed 'AUSTRALIA-LONDON and in USAmerica' with arrival b/s, Cat \$425.	250
1439	C	A-	- 2d 3d & 2/- tied to Orlo Smith cover by 'REGISTERED/-2MY35/MELBOURNE' cds ACSC #168y, blue/black 'Elizabeth St' registration label, couple of minor blemishes mostly on back, Cat \$425.	200



Lot 1440

1440	C	B	1937-49 Definitives Perf 13½x14 3d Die II Thin Paper 'Ash' imprint block of 4 on cover endorsed "First day of issue/21st December 1938" with 'GPO MELBOURNE/3/21DE38/VIC-AUST' cds & another strike alongside ACSC #194y, blue R label, some toning around the stamps, Cat \$1250. [The ACSC states that the issue date was 20th December, but Frank Pauer has confirmed that this is an error]	600
------	---	---	---	-----



Lot 1441

1441	C	A-	1937-49 Definitives Perf 15x14 Kangaroo ½d block of 6 tied to cover by 'GPO SYDNEY 130/28JA42/NSW-AUST' cds ACSC #179y, 'FIRST DAY OF ISSUE' boxed cachet alongside, couple of very minor blemishes, Cat \$5000. The ACSC states "Two first day covers are known...".	2,000
------	---	----	---	-------

COMMONWEALTH OF AUSTRALIA - First Day Covers (continued)

Lot Type Grading Description Est \$A



Lot 1442

1442 C A - QE 1d red-brown & KGVI 1 1/2d green, 2d mauve & 3d brown tied to *Huntercover* by 'ROCKHAMPTON/10DE41 QUEENSLAND' cds ACSC #183y 185y 189y & 196y, Cat \$500 for each value but unpriced for the four values on a single cover.

600



Lot 1443

1443 C B - QE 1d red-brown 'Ash' imprint block of 4 on 'Greetings' cover endorsed "IST DAY COVER" with 'CROW'S NEST/10DE41/NSW-AUST' cds & another strike alongside ACSC #183y, minor toning, Cat \$500.

200



Lot 1444

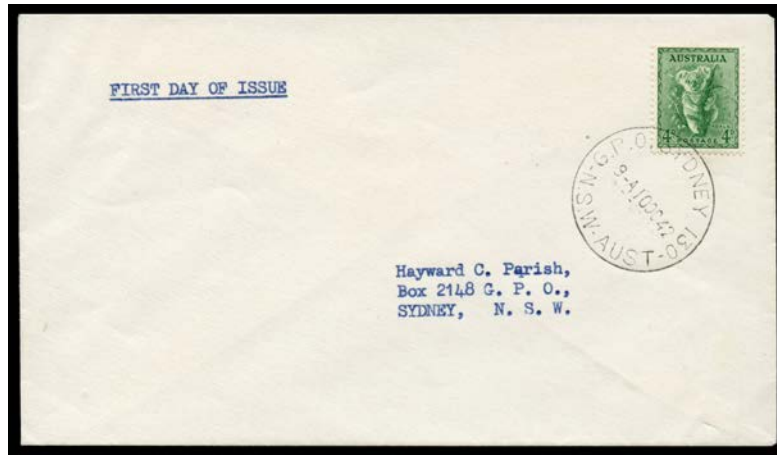
1444 C A- - KGVI 1 1/2d green 'McCracken' imprint strip of 4 on plain cover endorsed "FIRST DAY COVER" tied 'RUNDLE STREET/10DE41/STH AUST' cds ACSC #186y, couple of minor blemishes, Cat \$500.

200

COMMONWEALTH OF AUSTRALIA - First Day Covers (continued)

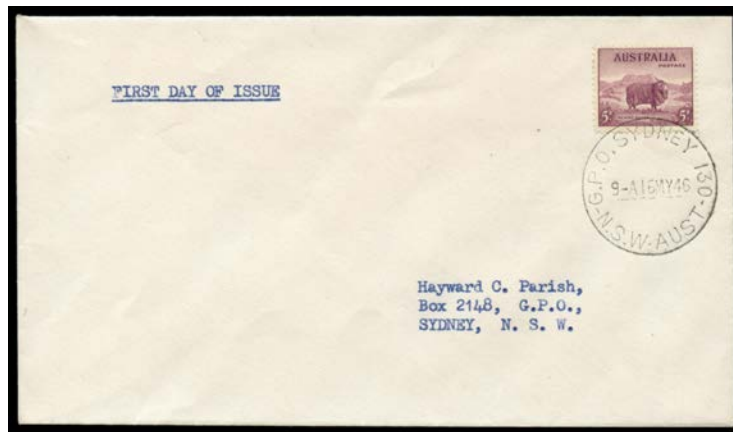
Lot Type Grading Description

Est \$A

**Lot 1445**

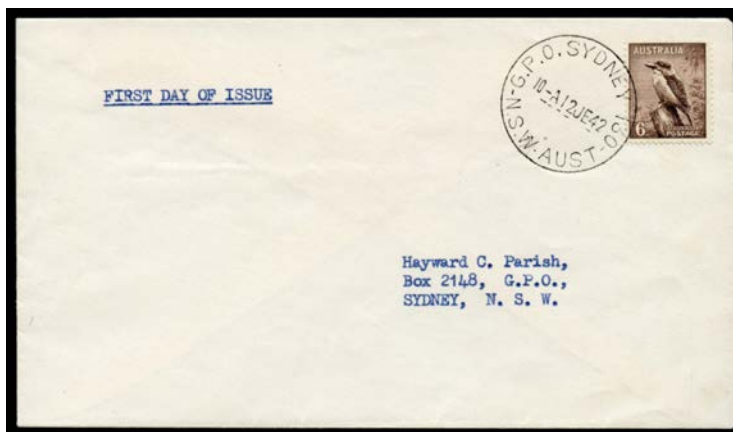
1445 C A+ - Koala 4d tied to plain *Parish* cover by fine 'GPO SYDNEY 130/10OC42/NSW-AUST' cds ACSC #198y, typed "FIRST DAY OF ISSUE" in blue as is the typed address, pristine condition, Cat \$5000. The ACSC states "One first day cover is recorded cancelled at GPO Sydney."

2,500

**Lot 1446**

1446 C A - Merino 5d tied to plain *Parish* cover by very fine 'GPO SYDNEY 130/16MY46/NSW-AUST' cds ACSC #201y, typed "FIRST DAY OF ISSUE" in blue as is the typed address, tiny imperfection on envelope clear of stamp & cancel otherwise pristine, Cat \$5000. The ACSC states "At least two first day covers are known cancelled at Sydney on 16 May 1946."

2,500

**Lot 1447**

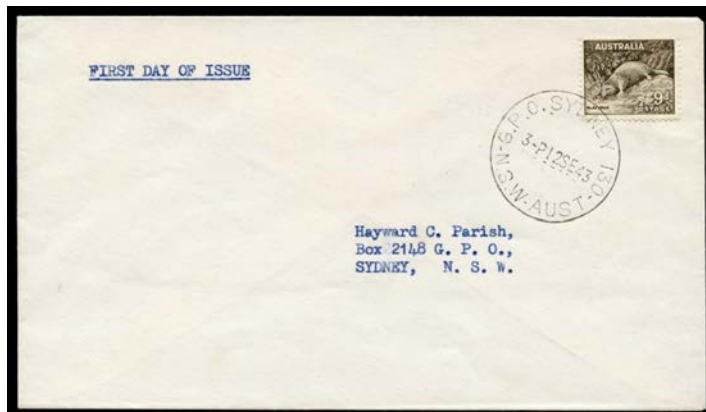
1447 C A+ - Kookaburra 6d tied to plain *Parish* cover by very fine 'GPO SYDNEY 130/12JE42/NSW-AUST' cds ACSC #203y, typed "FIRST DAY OF ISSUE" in blue as is the typed address, pristine condition, Cat \$5000. The ACSC states "One first day cover is known dated at Sydney GPO 12 June 1942."

2,500

COMMONWEALTH OF AUSTRALIA - First Day Covers (continued)

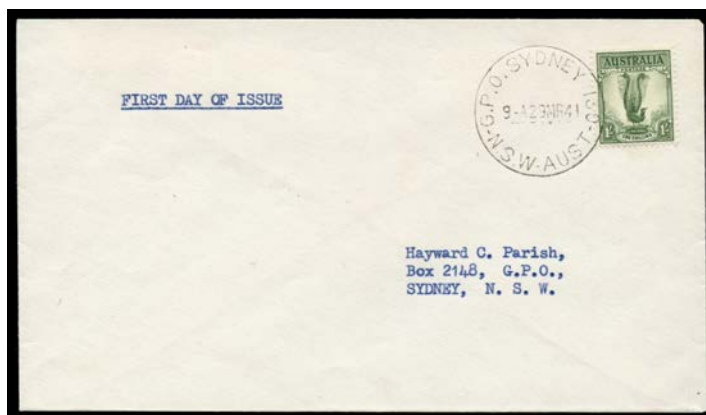
Lot Type Grading Description

Est \$A

**Lot 1448**

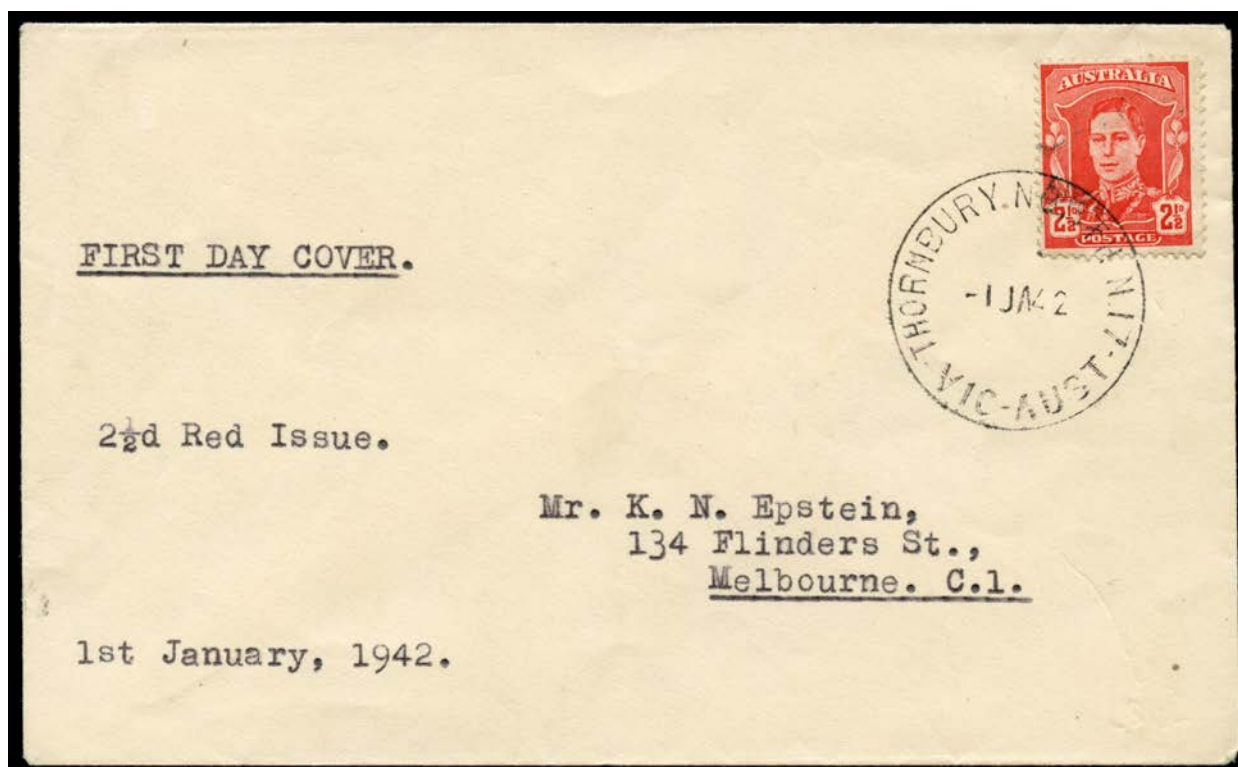
1448 C A+ - Platypus 9d tied to plain *Parish* cover by very fine 'GPO SYDNEY 130/12SE43/NSW-AUST' cds ACSC #206y, typed "FIRST DAY OF ISSUE" in blue as is the typed address, pristine condition, Cat \$5000. The ACSC states "One first day cover is known dated 12 September 1943 at GPO Sydney."

2,500

**Lot 1449**

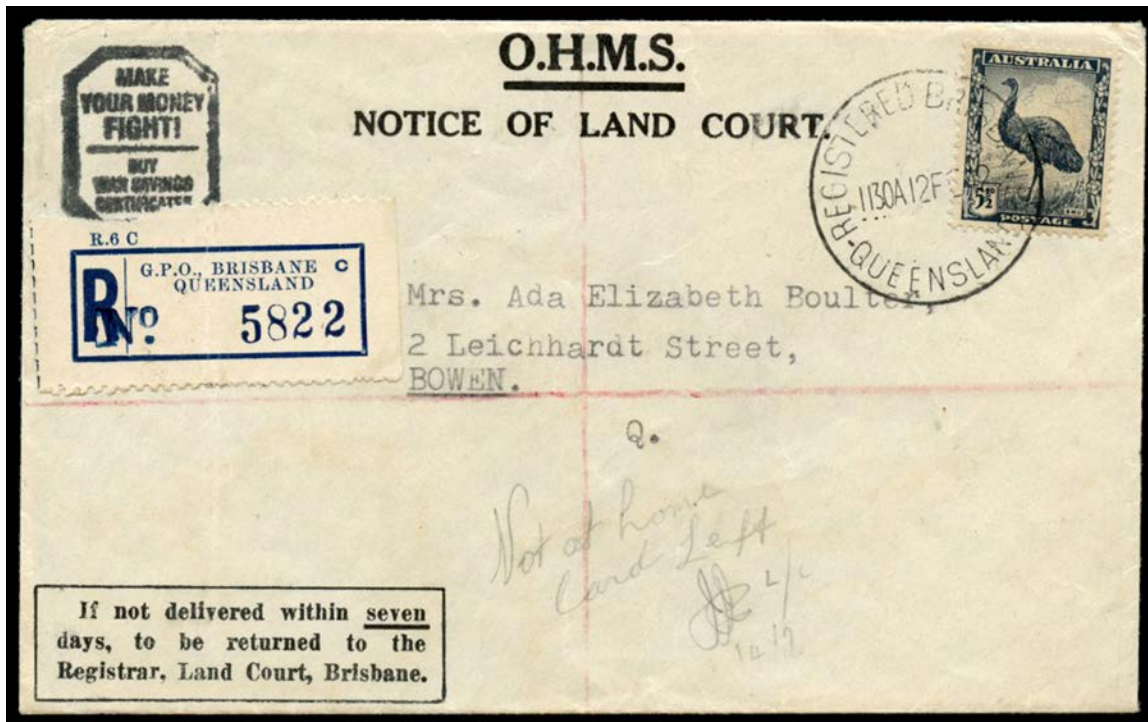
1449 C A+ - Lyre Bird 1/- tied to plain *Parish* cover by fine 'GPO SYDNEY 130/29MR41/NSW-AUST' cds ACSC #209y, typed "FIRST DAY OF ISSUE" in blue as is the typed address, pristine condition, Cat \$5000. *Frank Pauer* states "This is the only first day cover recorded". The ACSC states "A purported first day cover is known dated 29 March 1941 at GPO Sydney." It is believed that *HC Parish* worked at the Sydney GPO and would have had knowledge when stamp issues were released; this and the other *Parish* covers listed here are all cancelled with the same No 130 cds, also found applied to covers produced by his colleague *JC Thompson*. *The illustration is above Lot 1448.*

2,500

**Lot 1450**

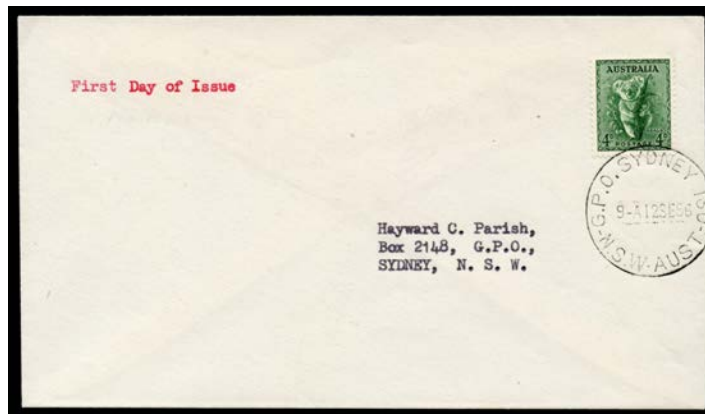
COMMONWEALTH OF AUSTRALIA - First Day Covers (continued)

Lot	Type	Grading	Description	Est \$A
1450	C	A	1942-50 Definitives KGVI 2½d red on plain cover endorsed "FIRST DAY COVER/2½d Red Issue/1st January 1942" tied 'THORNBURY NORTH N.17/-1JA42/VIC-AUST' cds ACSC #230y, Cat \$8000.	4,000



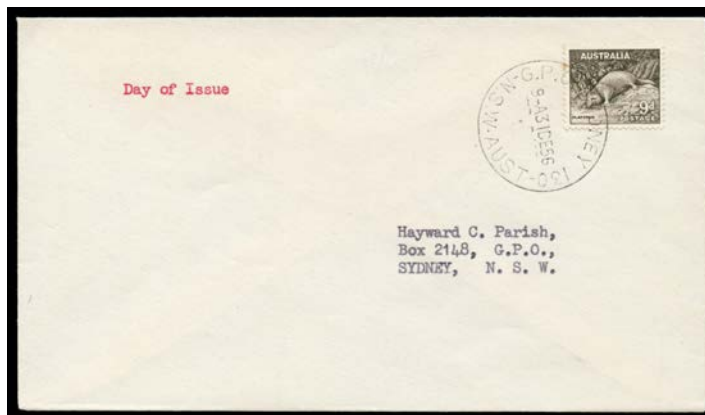
Lot 1451

1451	C	A-	- Emu 5½d on 'NOTICE OF LAND COURT' OHMS cover tied 'REGISTERED BRISBANE/12FE42/QUEENSLAND' cds ACSC #230y, 'MAKE/YOUR MONEY/FIGHT/BUY/WAR SAVINGS/CERTIFICATES' cachet, blue R label and 'BOWEN' arrival b/s, couple of very minor blemishes, Cat \$6000. <i>Ex Arthur Gray</i> ; sold for £6600 in September 2017. A remarkable commercial First Day Cover.	5,000
------	---	----	---	-------



Lot 1452

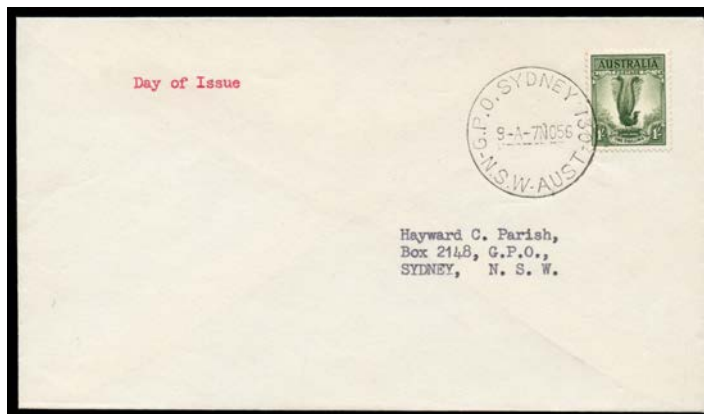
1452	C	A+	1948-56 Definitives No Watermark Koala 4d tied to plain <i>Parish</i> cover by fine 'GPO SYDNEY 130/12SE56/NSW-AUST' cds ACSC #199y, typed "First Day of Issue" in red with typed address in black, pristine condition, Cat \$5000. The ACSC states "At least two first day covers are recorded dated at Sydney on 12 September 1956."	2,500
------	---	----	--	-------



Lot 1453

COMMONWEALTH OF AUSTRALIA - First Day Covers (continued)

Lot	Type	Grading	Description	Est \$A
1453	C	A-	- Platypus 9d tied to plain <i>Parish</i> cover by fine 'GPO SYDNEY 130/31DE56/NSW-AUST' cds ACSC #207y, typed "Day of Issue" in red with typed address in black, just a hint of a tone spot between two perfs, Cat \$5000. The ACSC states "At least two first day covers are recorded postmarked at Sydney on 31 December 1956."	2,000



Lot 1454

1454	C	A+	- Lyrebird 1/- tied to plain <i>Parish</i> cover by very fine 'GPO SYDNEY 130/-7NO56/NSW-AUST' cds ACSC #210y, typed "Day of Issue" in red with typed address in black, pristine condition, Cat \$5000. The ACSC states "A first day cover is recorded dated 7 November 1956 at GPO Sydney."	2,500
------	---	----	--	-------



Lot 1455

1455	C	A	1951-52 Definitives KGVI 3½d brown-purple <i>booklet pane of 6</i> tied to <i>John Hawker</i> cover by 'ELIZABETH ST PO/PBR /-1JY52/ 2 /MELBOURNE' cds ACSC #253ya, typed "BOOKLET STAMPS/First Day of Issue" in red at upper-left, Cat \$2000. The ACSC states "At least six first day covers are recorded..."	1,000
------	---	---	--	-------



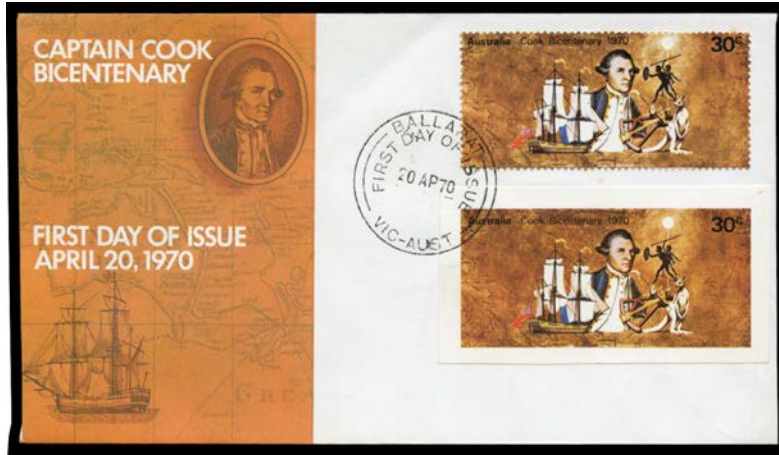
Lot 1456

1456	C	A	1955 Olympic Games Publicity 2/- green tied to <i>Ogden</i> screen-printed & hand-coloured FDC showing Olympic Rings & Torch by 'CARLTON/30NO55/VIC' cds, unaddressed & signed "EWm Ogden". Very attractive.	400
1457	CL	A-	1970 Commonwealth Parliamentary Association 6c tied to <i>Australia Post</i> official long-format cover 230x100mm by 'CANBERRA CITY/FIRST DAY OF ISSUE/-20C70/ACT-AUST' cds, neatly hand-addressed to Watson ACT, stamp slightly crooked with a couple of perfs over edge of envelope, plus a 'normal' 165x92mm cover. (2)	200

COMMONWEALTH OF AUSTRALIA - First Day Covers (continued)

Lot Type Grading Description

Est \$A



Ex Lot 1458

1458 C A-/B **1970 Captain Cook Bicentenary** 5c singles & 30c on five *Australia Post* covers each also with imperforate 5c singles & 30c cut from a M/S, 'BALLARAT/FIRST DAY OF ISSUE/20AP70/...' cds. Thye only such set we have seen. *The illustration is above Lot 1456. (6)*

300