

Lot Type Grading Description

Est \$A

GILBERT & ELLICE ISLANDS - Postal History



Ex Lot 2001

2001 C A/B **Bundle of commercial & mostly philatelic covers including 1917 registered from Tarawa, KGVI Roger Wells registered covers with double-circle cds of Abaiang, Abemama, Aranuka, Arorae, Funafuti (rubber cds), Marakei, Nanumea (commercial, not registered), Nonouti & Vaitupu, useful early-QEII group, also some 1970s flight covers, generally fine to very fine. (43)**

500^T



Lot 2002

2002 C B **1924 (c.) double-rate cover endorsed "Ng Sheung/cm #64/BPC/Ocean Island" addressed in Chinese & English to Hong Kong, very fine postman's delivery 'C5' h/s - a type not recorded by Ted Proud - in red, minor faults. An excellent origin/destination item. [From 1900, the island's phosphate resources were shamefully exploited by the Pacific Phosphate Company. After WWI, the government-backed British Phosphate Company took over but many of the PPC executives continued with the BPC]**

200

2003 C B **1930 (c.) philatelic cover to NSW with KGV 2½d x3 & superb strike of the very scarce 'SS NAURU CHIEF' handstamp, light spotting.**

150



Ex Lot 2004

2004 C A/B **1935 KGV Silver Jubilee frankings from Ocean Island including five registered 1) airmail to Kenya with 1d x3 (one faulty), 1½d, 3d x 2 (one on back) & 1/-; 2) to USA with 1d x3, 1½d x2 & 3d, 'LETTER PACKAGE/COLLECT TEN CENTS' and US 10c Postage Due; 3) OHMS to Southern Rhodesia with 1½d & 3d; 4) to USA with 1d, 1½d & 3d plus KGV ½d and 'Missent to East San Diego, Calif' cachet on face; 5) to USA with 1d x3 & 3d; etc, condition mixed but mostly fine. (9)**

500^T

GILBERT & ELLICE ISLANDS - Postal History (continued)

Lot Type Grading Description

Est \$A

**Ex Lot 2005**

- 2005** C A/B - KGV Silver Jubilee frankings including **1**) to Australia with 1d & KGV 1½d tied '.../POST OFFICE/ABAIANG/...' undated h/s; **2**) to USA with 1½d strip of 4 tied poor '.../G.P.O./BERU ISLD/...' undated h/s with hand-drawn "R/1275/Beru" boxed marking; **3**) to Perth with 3d single tied '.../BUTARITARI/10MAY38/P.O./...' cds & 'R/BUTARITARI/G.&E.I.C./No. ...' cachet, taxed "3" with Australian 3d Postage Due; **4**) to USA with 1½d pair (right unit *Flagstaff Double Entry Plate 6 Row 1/2*) tied by two fine strikes of '.../17OC35/POST OFFICE/FUNAFUTI' cds, Tarawa transit in blue alongside; **5**) to London with 3d pair tied indistinct rubber d/s but fine 'R/TARAWA G.E.I.C.' cachet alongside both in violet; etc, condition mixed including one front only but generally fine. **(9)**

500^T**Lot 2006**

- 2006** C A- - real photo postcard of General Store with uniformed islander out front, sent to *A Harold Gaze Esq, British Phosphate Commissioner, Melbourne* endorsed from "Ocean Island" with Jubilee 1½d tied '.../MY6/35/...' cds [**Jubilee Day**; rest of cancel somewhat indistinct], the lengthy message in pencil dated "7/5/35" (?) includes "... leaving this afternoon for Nauru ... Last evening called at Residency and attended Jubilee Celebrations ..." and is possibly signed "AFE" (Albert F Ellis?), couple of minor blemishes. [See also the next lot]

250^T

GILBERT & ELLICE ISLANDS - Postal History (continued)

Lot Type Grading Description

Est \$A

**Ex Lot 2007**

2007 C/L A/A- - large-part parcel wrapper to *Albert F Ellis Esq, CMG, FRGS, Phosphate Commissioner for New Zealand, Auckland* endorsed "REGISTERED POST/CONTENTS, BOOK" with Jubilee 1d x3, 1½d x3, 3d x2 & 1/- x2 tied '210C/35' cds and 'R/OCEAN ISLAND/G.&E.I.C.' cachet alongside paying ½d per 1oz printed matter rate x69 (!) plus 3d registration for a book weighing 4lb 5oz; plus the book 'Ocean Island and Nauru' by *Ellis* (published by Angus & Robertson 1935; **first edition**) inscribed to "Mr Robt Angus ... Auckland/27.8.35" and signed by the author, minor blemishes.

Albert Ellis discovered the extensive phosphate deposits on Ocean Island & Nauru in 1900, and by the 1935 the phosphate mines were exporting 600,000 tons annually to Australia & New Zealand. This meant 40+ ships a year calling at Ocean Island, providing the only regular mail service in the Gilbert & Ellice Islands. **(2 items)**

600^T**Lot 2008**

2008 C B **1950** commercial airmail cover from Fiji with KGVI 6d Map tied by light 'NUNUKULOVA' cds & 'T/40c' h/s both in violet to *PanAm* on Canton Island, Postage Due 2d pair tied by 'G&EIC CANTON ISLAND/BRITISH POST OFFICE' arrival cds, minor blemishes. [Nunukuloa is on the NE coast of Viti Levu, about 80km N of Suva] 400

2009 C A- **1951** (June 22) airmail cover to UK "Via Fiji/and USA" with rare franking of KGVI 2/6d Canoe block of 4 + 1d 6d & 1/- all tied by 'POST OFFICE/ABAIANG' cds, superb registration cachet below, Suva transit b/s. 250^T

2010 PS A **1975** 3c Letter Card ('Cleaning Pandanus Leaves') unused, and CTO with Tuvalu 2c tied by Tuvalu cds of Funafuti, Nanumea, Niulakita, Nui, Nukulaelae, Niuatao or Vaitupu, plus two with indistinct cds. **(10)** 150^T

GILBERT & ELLICE ISLANDS - Postal History (continued)

Lot Type Grading Description

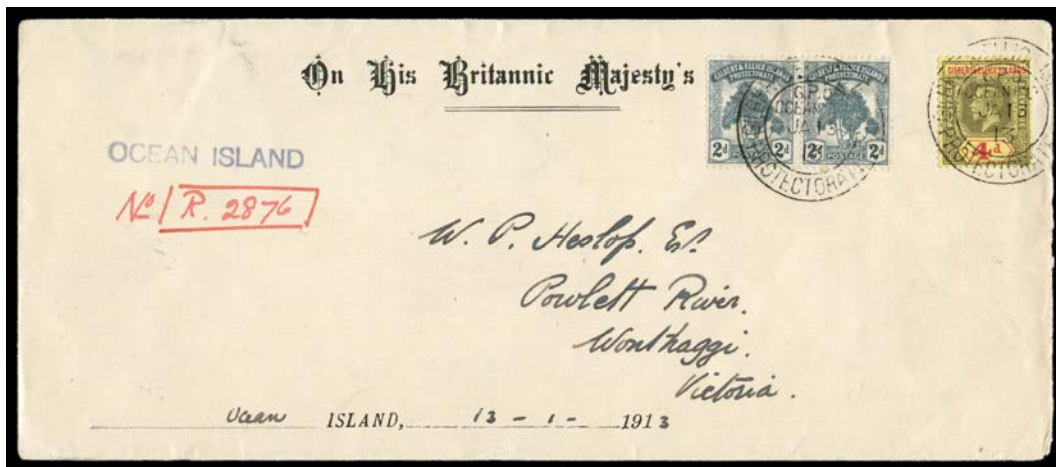
Est \$A



Lot 2011

2011 C B **CHRISTMAS ISLAND:** 1918 local cover to Rapa with Perf 12½ 5c Yacht tied by Christmas Island cds 'JAN 15 1918', light diagonal crease.

200



Lot 2012

2012 C/CL A/B **OCEAN ISLAND:** Registered covers with 1912-13 x3 each with 'OCEAN ISLAND' h/s in lieu of registration cachet, 1919 x2 each with red/white R label, 1939 with manuscript "label", 1939 with very fine 'OFFICIAL/POSTAGE/FREE' cachet & rubber R cachet, and 1945 (Oct 8) endorsed "Reopening Post Office" with rubber double-circle cds & mss "label". Good lot.

600^T

Ex Lot 2013

2013 CPS A/B **TARAWA:** Batch including two 1917 registered to UK one at correct rate both with red/white 'G & EIP' label, 1944 with largely superb strike of the undated triple-circle 'GILBERT AND ELLICE ISLANDS COLONY/POST/OFFICE/TARAWA' in violet, 1959 with undated rubber 'POST OFFICE TARAWA/("2d")/PAID/GEIC' & 1961 with superb distorted strike, 1966 formular aerogramme from Post Office to UK, generally fine to very fine. (14)

600^T