

Lot Type Grading Description

Est \$A

**REST OF THE WORLD - GENERAL and MISCELLANEOUS LOTS**



Ex Lot 1560

1560 \*O

Albums of Pacific Islands & Australian Territories with much useful Solomons, Gilbert & Ellice, Pitcairn & Fiji plus PNG, Norfolk Island (with lots of duplication), some New Guinea including Bulolo £2 & £5, Dated 'OS' mint to 2/- & Undated 'OS' 5/-, etc, condition variable (many 100s)

500

**BRITISH EMPIRE SPECIMEN STAMPS**

In recent years, 'SPECIMEN' and CTO stamps have become ever more popular. The relatively low numbers produced means that such material is generally very scarce. And a lack of care on the part of the UPU and/or the postal agencies means that defects - especially perforation problems - should be expected. Much of the material released by various receiving authorities is far from pristine: often the stamps have been soaked off ledger pages & in many cases fugitive inks have faded. The collection offered here, with strength in the Reign of KEVII, is by far the most extensive we have handled: note that further extensive selections are included in the 'Eureka' Australian Colonies catalogue. The quality generally is at least as fine as can be expected. Much of this material, from an unknown source, has full unmounted gum but also exhibits some tropicalisation. There is also some material that is truly superb! Such matters have been taken into account in our gradings. References are to the pioneering work by Marcus Samuel (1976), James Bendon's monumental "UPU Specimen Stamps 1878-1961" (2015) & "The De La Rue Collection" edited by Frank Walton.



Ex Lot 1648

1648 Ω\*

GILBERT & ELLICE ISLANDS: 1911 Overprints on Fiji SG 1-7, the 1/- is very fine but the others are aged & have no gum; 1911 Pandanus Pines set; 1918 1d 'WAR TAX'; Cat £550. (11)

300



Lot 1649

1649 Ω

A/B

- 1911 Overprints on Fiji SG 1-7 three sets affixed to ledger page & tied by '.../COLLECTION/DE/BERNE/MADAGASCAR' cachet in rosine, the page erroneously dated "22 Sepember/1910" instead of 1911, minor toning affects one set, the other two sets are very fine, Cat £900+.

1,000

**BRITISH EMPIRE SPECIMEN STAMPS (continued)**

Lot Type Grading Description Est \$A

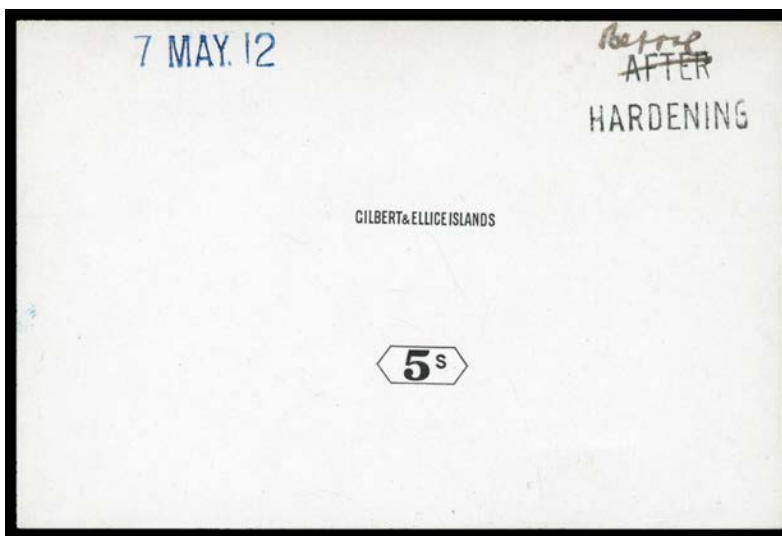


**Ex Lot 1650**

**1650** Ω A/B - 1911 Overprints on Fiji ½d to 6d SG 1-6 (ex 5d) with largely indistinct cancels, a few small defects & no gum. Ex Gabon Postal Archive. (5)

400

**GILBERT & ELLICE ISLANDS**



**Ex Lot 2000**

**2000** P A- 1912-24 KGV Keyplates 3d 4d 1/- 2/- 2/6d & 5/- die proofs of the Colony & Value Tablets only in black on separate glazed cards (92x61mm), various handstamps & endorsements, some rubbing but of very fine appearance. (6)

1,000

**GILBERT & ELLICE ISLANDS - Postal History**



**Ex Lot 2001**

**2001** C A/B Bundle of commercial & mostly philatelic covers including 1917 registered from Tarawa, KGVI Roger Wells registered covers with double-circle cds of Abaiang, Abemama, Aranuka, Arorae, Funafuti (rubber cds), Marakei, Nanumea (commercial, not registered), Nonouti & Vaitupu, useful early-QEII group, also some 1970s flight covers, generally fine to very fine. (43)

500<sup>T</sup>



GILBERT & ELLICE ISLANDS - Postal History (continued)

Lot Type Grading Description Est \$A



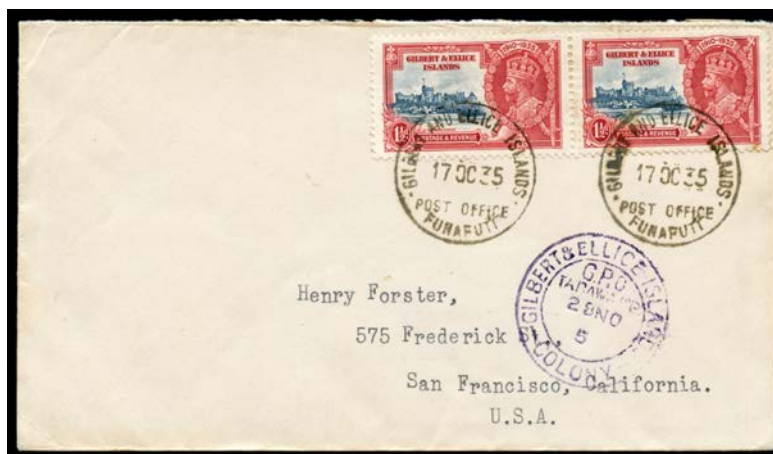
Lot 2002

2002	C	B	1924 (c.) double-rate cover endorsed "Ng Sheung/cm #64/BPC/Ocean Island" addressed in Chinese & English to Hong Kong, very fine postman's delivery 'C5' h/s - a type not recorded by Ted Proud - in red, minor faults. An excellent origin/destination item. [From 1900, the island's phosphate resources were shamefully exploited by the Pacific Phosphate Company. After WWI, the government-backed British Phosphate Company took over but many of the PPC executives continued with the BPC]	200
2003	C	B	1930 (c.) philatelic cover to NSW with KGV 2½d x3 & superb strike of the very scarce 'SS NAURU CHIEF' handstamp, light spotting.	150



Ex Lot 2004

2004	C	A/B	1935 KGV Silver Jubilee frankings from Ocean Island including five registered 1) airmail to Kenya with 1d x3 (one faulty), 1½d, 3d x 2 (one on back) & 1/-; 2) to USA with 1d x3, 1½d x2 & 3d, 'LETTER PACKAGE/COLLECT TEN CENTS' and US 10c Postage Due; 3) OHMS to Southern Rhodesia with 1½d & 3d; 4) to USA with 1d, 1½d & 3d plus KGV ½d and 'Missent to East San Diego, Calif' cachet on face; 5) to USA with 1d x3 & 3d; etc, condition mixed but mostly fine. (9)	500 <sup>T</sup>
------	---	-----	---	------------------



Ex Lot 2005

2005	C	A/B	- KGV Silver Jubilee frankings including 1) to Australia with 1d & KGV 1½d tied '.../POST OFFICE/ABAIANG/...' undated h/s; 2) to USA with 1½d strip of 4 tied poor '.../G.P.O./BERU ISLD/...' undated h/s with hand-drawn "R/1275/Beru" boxed marking; 3) to Perth with 3d single tied '.../BUTARITARI/10MAY38/P.O./...' cds & 'R/BUTARITARI/G.&E.I.C./No. ...' cachet, taxed "3" with Australian 3d Postage Due; 4) to USA with 1½d pair (right unit Flagstaff Double Entry Plate 6 Row 1/2) tied by two fine strikes of '.../170035/POST OFFICE/FUNAFUTI' cds, Tarawa transit in blue alongside; 5) to London with 3d pair tied indistinct rubber d/s but fine 'R/TARAWA G.E.I.C.' cachet alongside both in violet; etc, condition mixed including one front only but generally fine. (9)	500 <sup>T</sup>
------	---	-----	---	------------------

**GILBERT & ELLICE ISLANDS - Postal History (continued)**

Lot Type Grading Description

Est \$A



Lot 2006

**2006** C A- - real photo postcard of General Store with uniformed islander out front, sent to *A Harold Gaze Esq, British Phosphate Commissioner, Melbourne* endorsed "Ocean Island" with Jubilee 1½d tied '.../MY6/35/...' cds [Jubilee Day; rest of cancel somewhat indistinct], the lengthy message in pencil dated "7/5/35" (?) includes "... leaving this afternoon for Nauru ... Last evening called at Residency and attended Jubilee Celebrations ..." and is possibly signed "AFE" (Albert F Ellis?), couple of minor blemishes. [See also the next lot]

250<sup>T</sup>

Ex Lot 2007

**2007** C/L A/A- - large-part parcel wrapper to *Albert F Ellis Esq, CMG, FRGS, Phosphate Commissioner for New Zealand, Auckland* endorsed "REGISTERED POST/CONTENTS, BOOK" with Jubilee 1d x3, 1½d x3, 3d x2 & 1/- x2 tied '210C/35' cds and 'R/OCEAN ISLAND/G.&E.I.C.' cachet alongside paying ½d per 1oz printed matter rate x69 (!) plus 3d registration for a book weighing 4lb 5oz; plus the book 'Ocean Island and Nauru' by *Ellis* (published by Angus & Robertson 1935; **first edition**) inscribed to "Mr Robt Angus ... Auckland/27.8.35" and signed by the author, minor blemishes.

*Albert Ellis* discovered the extensive phosphate deposits on Ocean Island & Nauru in 1900, and by the 1935 the phosphate mines were exporting 600,000 tons annually to Australia & New Zealand. This meant 40+ ships a year calling at Ocean Island, providing the only regular mail service in the Gilbert & Ellice Islands. (2 items)

600<sup>T</sup>



## GILBERT &amp; ELLICE ISLANDS - Postal History (continued)

Lot Type Grading Description

Est \$A



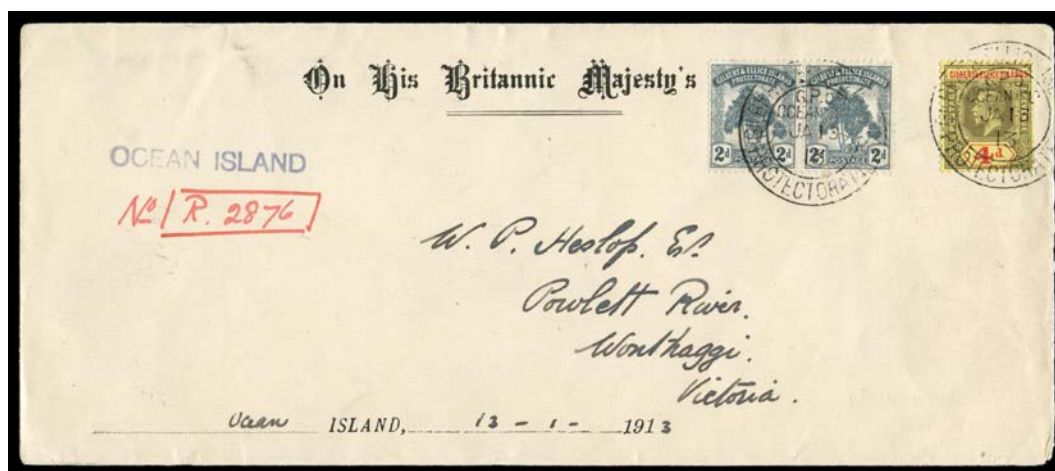
Lot 2008

2008	C	B	1950 commercial airmail cover from Fiji with KGVI 6d Map tied by light 'NUNUKULOVA' cds & 'T/("40c")' h/s both in violet to <i>PanAm</i> on Canton Island, Postage Due 2d pair tied by 'G&EIC CANTON ISLAND/BRITISH POST OFFICE' arrival cds, minor blemishes. [Nunukuloa is on the NE coast of Viti Levu, about 80km N of Suva]	400
2009	C	A-	1951 (June 22) airmail cover to UK "Via Fiji/and USA" with rare franking of KGVI 2/6d Canoe block of 4 + 1d 6d & 1/- all tied by 'POST OFFICE/ABAIANG' cds, superb registration cachet below, Suva transit b/s.	250 <sup>T</sup>
2010	PS	A	1975 3c Letter Card ('Cleaning Pandanus Leaves') unused, and CTO with Tuvalu 2c tied by Tuvalu cds of Funafuti, Nanumea, Niulakita, Nui, Nukulaelae, Niuatao or Vaitupu, plus two with indistinct cds. (10)	150 <sup>T</sup>



Lot 2011

2011	C	B	<b>CHRISTMAS ISLAND:</b> 1918 local cover to Rapa with Perf 12½ 5c Yacht tied by Christmas Island cds 'JAN 15 1918', light diagonal crease.	200
------	---	---	---	-----



Lot 2012

2012	C/CL	A/B	<b>OCEAN ISLAND:</b> Registered covers with 1912-13 x3 each with 'OCEAN ISLAND' h/s <i>in lieu</i> of registration cachet, 1919 x2 each with red/white R label, 1939 with manuscript "label", 1939 with very fine 'OFFICIAL/POSTAGE/FREE' cachet & rubber R cachet, and 1945 (Oct 8) endorsed "Reopening Post Office" with rubber double-circle cds & mss "label". Good lot.	600 <sup>T</sup>
------	------	-----	--	------------------

**GILBERT & ELLICE ISLANDS - Postal History (continued)**

Lot	Type	Grading	Description	Est \$A
-----	------	---------	-------------	---------

**Ex Lot 2013****2013**

CPS

A/B

**TARAWA:** Batch including two 1917 registered to UK one at correct rate both with red/white 'G & EIP' label, 1944 with largely superb strike of the undated triple-circle 'GILBERT AND ELLICE ISLANDS COLONY/POST/OFFICE/TARAWA' in violet, 1959 with undated rubber 'POST OFFICE TARAWA/("2d")/PAID/GEIC' & 1961 with superb distorted strike, 1966 formular aerogramme from Post Office to UK, generally fine to very fine. (14)

600<sup>T</sup>