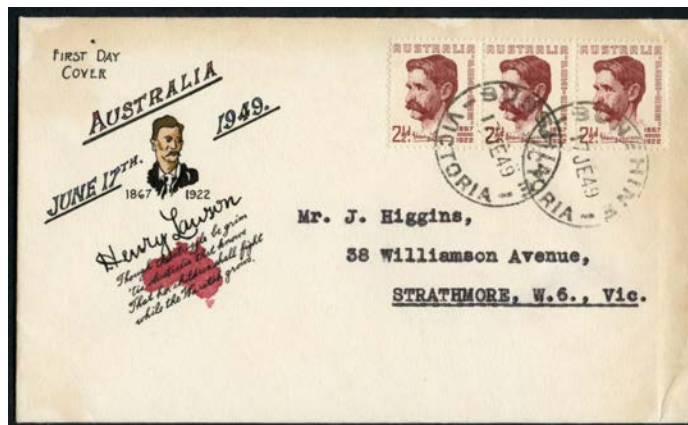


Lot	Type	Grading	Description	Est \$A
-----	------	---------	-------------	---------

COMMONWEALTH OF AUSTRALIA - First Day Covers

354	C		See also Penny Kangaroo First Day of Issue at Melbourne: Lot 43. 1930s-60s selection with variety of producers including 1937 NSW Sesquicentenary on multi-coloured "Northern" Series cover, 1953 Produce Food strips on single covers x2, a number of registered items, a few 'First Day Cards' including 2/- green Olympic Publicity and a particularly attractive Cobb & Co illustrated card, some unaddressed, also various non-FDC commemorative covers & cancels noted 1948-49 Pan-Pacific Scout Jamboree on five covers with differently-coloured cachets & 1950 Stamp Exhibition items, etc, condition generally fine. (100+)	200
-----	---	--	--	-----

**Lot 355**

355	C	B	1949 Henry Lawson 2½d strip of 3 tied by 'SUNSHINE/17JE49/VICTORIA' cds, hand-illustrated perhaps by <i>Eric Ogden</i> but not signed, minor blemishes.	120
356	C/CO	A/A-	1970 National Development 9c Bauxite pair on oversize <i>Alcoa</i> FDC with enclosed promotional booklet for the company; also <i>Qld Geographical Society</i> 1946 Leichhardt x2 different, one with <i>QGS</i> Leichhardt brochure, and 1946 Mitchell x3 different, one with <i>QGS</i> fundraising brochure. Unusual lot. No reserve. (7 items)	50
357	C	A/A-	ARCHIBALD MOUBRE GUTHRIE: 1954-59 group including Royal Visit registered, Railways block of 4, ANARE block of 4, Olympic Propaganda 2/- blue, US Memorial block of 4, SA Responsible Government block of 4, QEII 7d block of 4, War Memorial pair, etc, several of the later covers are generics, five are unaddressed. (21)	150
358	C	B	RA KINGSTON: 1946 Peace set tied to cover with printed text by 'CHIEF PARCELS OFFICE/ 5 /18FE46/NSW' cds (rarely seen on cover), faint toning. Cover producer not recorded by <i>Moore et al.</i>	100
359	C	B/D	RN NOLAN: 1945 Duke of Gloucester set tied to generic cover overprinted with issue-specific text by Sydney cds of 19FE45, registered, a little aged; and a second example unaddressed but with faults. (2)	100

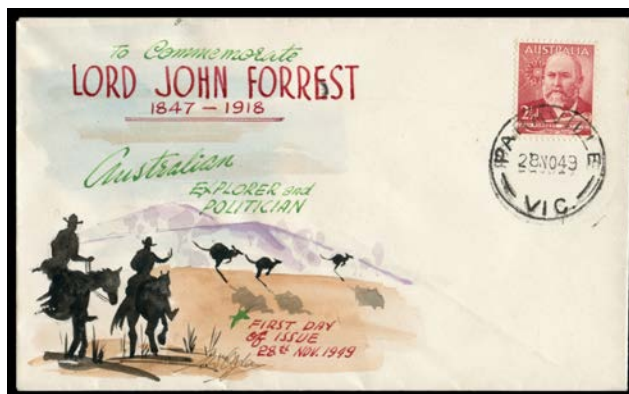
**Lot 360**

360	C	A	ERIC WILLIAM OGDEN: <i>Eric Ogden</i> produced a small number of FDCs for most issues between 1949 & 1965. They were variously hand-painted or screen-printed entirely or in part. All those offered here are signed "E Wm Ogden" & are unaddressed. 1949 Henry Lawson 2½d tied to handpainted cover by 'BRIGHTON RD S3/17JE49/ VIC-AUST' cds. [This was the first issue for which <i>Ogden</i> produced FDCs. Six covers are known, all with different designs. <i>Ogden's</i> handpainted covers have often sold for more than \$500 each]	300
------------	---	---	---	-----

COMMONWEALTH OF AUSTRALIA - First Day Covers (continued)

Lot Type Grading Description

Est \$A



Lot 361

361 C A - 1949 Sir John Forrest 2½d tied to handpainted cover by 'PARKVILLE/28NO49/VIC' cds.

300



Lot 362

362 C A- - 1950 Aborigine 8½d tied to handpainted cover by 'PARKVILLE/14AU50/VIC' cds, a few tiny tonespots.

250



Lot 363

363 C A - 1952 Scout Jamboree 3½d tied to screenprinted cover by 'COBURG N13 No 1/19NO52/VIC-AUST' cds.

200

364 C A - 1953-56 QEII Definitives 3d green tied to screenprinted cover by 'COBURG N13 No 1/17JE53/VIC-AUST' cds.

100



Lot 365

365 C A- - 1953-56 QEII Definitives 3½d red on handpainted cover with small photograph of the Queen inserted, tied by 'COBURG N13 No 1/21AP53/VIC-AUST' cds, endorsed "The first stamp portraying the Queen, issued on Her birthday...", a few minor tonespots. [A similar cover for the 3d sold at the *Prestige* auction of 11.6.2008 for \$920]

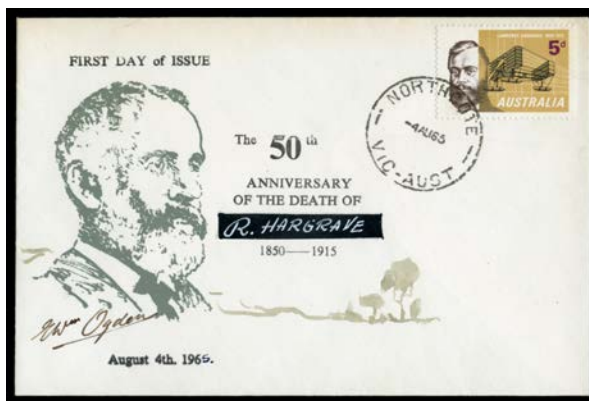
350

366 C A - 1954 Red Cross Society 3½d tied to screenprinted cover by 'CARLTON STH N.3/9JE54/VIC-AUST' cds.

100

COMMONWEALTH OF AUSTRALIA - First Day Covers (continued)

Lot	Type	Grading	Description	Est \$A
367	C	A	- 1954 Railway Centenary 3½d Trains tied to handpainted cover by 'THORNBURY/13SE54/VIC' cds. [Unusually, the design is incomplete, with details of the trains not added]	150
368	C	A/A-	- 1955-63 Issues on screenprinted generic covers with Kangaroos Hopping to Left comprising SA Stamp Centenary, SA Self-Government, Broken Hill, Animals 6d - with Numbat pencil-sketch - 11d pair & 1/2d, Flowers 1/6d, NT Centenary, Melbourne Cup, Queensland Stamp Centenary, AAT 5d blue, and Blue Mountains, a few minor blemishes. (12)	350
369	C	A	- ERIC WILLIAM OGDEN: 1955 Rotary Half-Century 3½d Globe & Flags tied to screenprinted cover by 'MORELAND N13/23FE55/ VIC-AUST' cds.	100
370	C	A	- 1955 YMCA Centenary 3½d tied to screenprinted cover by 'COBURG N13/10AU55/VIC-AUST' cds.	100
371	C	A	- 1955 Nursing/Florence Nightingale Centenary 3½d pair tied to screenprinted cover by 'COBURG/21SE55/ VIC-AUST' cds.	100
372	C	A/A-	- 1957-64 Christmas Issues complete except for 1963 - the 1958 duo on separate covers - tied to screenprinted covers by various cds, a few blemishes. (8)	450
373	C	A/A-	- 1958-63 Issues on screenprinted generic covers with Trees & Kangaroos Hopping to Right comprising Kingsford Smith, Flowers 2/5d & 3/-, Queensland Self-Government, Post Office Sesqui-Centenary, Animals 8d, Guiding, Colombo Plan, Inland Mission, CWA & Canberra Anniversary, a few minor blemishes. (11)	350
374	C	A	- 1959-63 Flowers 2/- Flannel Flower tied to screenprinted cover by 'CARLTON N3/8AP59/VIC-AUST' cds.	100
375	C	A	- 1961 Dame Nellie Melba 3½d tied to screenprinted cover by 'COLLINGWOOD N5/20SE61/VIC-AUST' cds.	100
376	C	A	- 1963 Red Cross Centenary 5d tied to screenprinted cover by 'COBURG N13/8MY63/ 4 /VIC-AUST' cds.	100
377	C	A+	- 1964 Christmas screenprinted 'Christmas generic' cover. Superb!	100
378	C	A	- 1965 Sir John Monash 5d tied to screenprinted cover by 'NORTHCOTE/23JE65/VIC' cds.	100



Lot 379

379	C	A	- 1965 Lawrence Hargrave 5d tied to screenprinted cover by 'NORTHCOTE/4AU65/VIC-AUST' cds, inscribed 'R HARGRAVE' in error. [The 1965 Christmas stamp was the last issue for which <i>Ogden</i> produced FDCs]	100
-----	---	---	---	-----

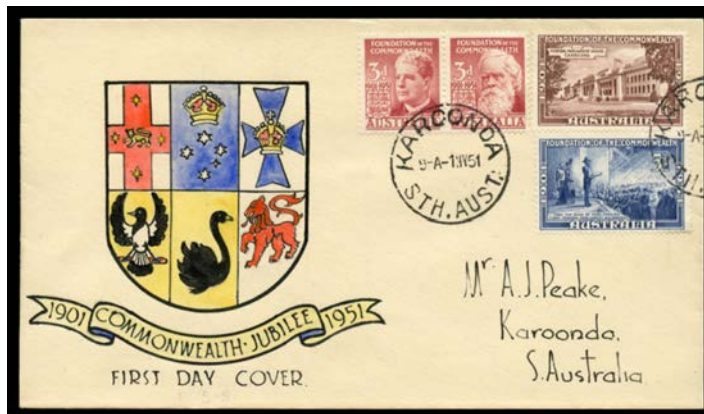


Ex Lot 380

380	C	A/A+	JACK PEAKE: Group with 1950 8½d Aborigine hand-painted, stencilled illustrations for 3½d Swan x7, Railways x2, USA Memorial x16 & YMCA x7, also <i>EW Ogden</i> for 1954 Red Cross & 1955 Rotary plus generics for Flying Doctor & 8d Tiger Cat x2, mostly unaddressed & generally very fine. (38)	250
381	CL	A	- This & the following covers were all hand-painted by noted Adelaide illustrator, the late AJ (Jack) Peake . Jack's work, much of which is highly artistic, gained a new following from the sale of covers from his estate by <i>Prestige</i> between 2007 & 2012. Many sold for more than \$500 each, and several topped the \$1000 mark. Unless stated otherwise, all covers are very fine & unaddressed. 1951 Federation Jubilee complete set tied to long cover - Parliament House & State Emblems - by 'KAROONDA' cds of 1MY51.	150

COMMONWEALTH OF AUSTRALIA - First Day Covers (continued)

Lot Type Grading Description Est \$A



Lot 382

382	C	A	- 1951 Federation Jubilee complete set tied by 'KAROONDA' cds of 1MY51. Sold in 2010 for \$506.	200
383	CL	A	- 1953 Tasmania Sesquicentenary 3½d se-tenant pair & 2/- tied to three long covers (240x105mm) with different Port Arthur illustrations by Gladstone cds of 23SE53. (3)	500



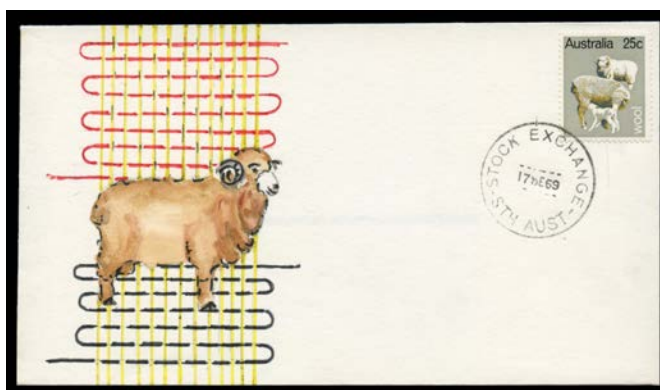
Lot 384

384	C	A	- 1958 Australian War Memorial 5½d se-tenant pair tied by Stock Exchange Adelaide cds of 10FE58.	150
------------	---	---	--	-----



Ex Lot 385

385	C	A	- 1968 State Floral Emblems 6c to 30c on individual covers each tied by Stock Exchange (SA) cds of 10JY68, the 25c with 'sticky tape' residue on the flap. (6)	300
------------	---	---	--	-----



Ex Lot 386

386	C	A	- JACK PEAKE: 1969 Primary Industries 7c to 25c on individual covers each tied by Stock Exchange (SA) cds of 17SE69. (4)	280
387	CL	A	- 1975-78 Christmas issues tied to four long covers by Hindmarsh FDI cds of the appropriate dates. (4)	250

COMMONWEALTH OF AUSTRALIA - First Day Covers (continued)

Lot Type Grading Description

Est \$A

**Ex Lot 388**

388	C	A	- 1984 Christmas 24c to 85c tied to separate covers by Hindmarsh FDI cds of 31OCT1984. (4)	280
389	CL	A	- 1984 Aboriginal Art set tied to two covers by Hindmarsh FDI cds of 7NOV1984. (2)	100
390	CL	A	- 1987 Bicentenary of Settlement - First Fleet at Tenerife - 36c se-tenant pair & \$1 tied by Hindmarsh FDI cds of 3JUN1987. [Evocative illustration of ship approaching port]	100

**Lot 391**

391	C	A	STANDARD STAMP CO: 1949-50 Arms £2 green tied to generic cover to New York by very fine 'GREENSLOPES REPAT HOSP/16JA50/QLD-AUST' cds. <i>Ex George Lang</i> : sold at the <i>Prestige</i> auction of 13.6.2009 for \$1955.	1,000
------------	---	---	---	-------