

Lot Type Grading Description

Est \$A

WESTERN AUSTRALIA - Travelling Post Offices

Lot 2166

2166 PS B B1- **EASTERN GOLDFIELDS RAILWAY:** 21mm 'TPO EASTERN GOLDFIELDS/SP16/[02]/WA' (no gang & year slugs) transit b/s on Victorian 1d Envelope uprated to 'PADDINGTON/WA' (24mm arrival b/s; PO 15.11.1897; closed 30.11.1911), a few blemishes.

150^T

Lot 2167

2167 PS B A1 - 22½mm 'TPO EGF/AU12/98/WA' (letters 3mm high) very fine transit on face of WA 1d Postal Card uprated to London with 'COOLGARDIE' duplex.

120^T

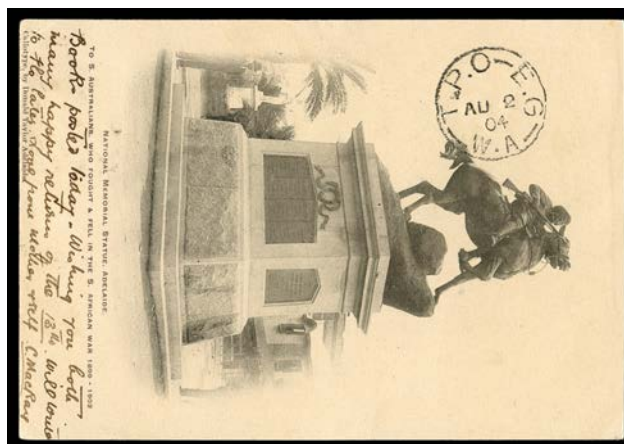
Lot 2168

2168 C C A1 - 22½mm 'TPO EGF/DE6/99/WA' (letters 3mm high) two very fine strikes one tying 2d grey to face of cover to Guildford, peripheral faults.

120^T

Lot 2169

2169 CL B A1 - 'GOLDFIELDS/SP12/10/TPO' very fine transit b/s on solicitor's cover Menzies to Melbourne, a few faults.

150^T

Lot 2170

2170 C A A1+ - 'TPO - EG/AU2/04/WA' superb b/s on PPC from Adelaide to Kalgoorlie.

200^T

WESTERN AUSTRALIA - Travelling Post Offices (continued)

Lot Type Grading Description Est \$A



Lot 2171

2171 S B A2+ - 'E G TPO/FE25/03/WA' (serifed 'E.G') superb large-part strike on 2d yellow. Recorded 9 months only. 100^T



Lot 2172

2172 C A- B2 GREAT SOUTHERN RAILWAY: 'PERTH-ALBANY/WA/ 12 /FE28/91/[TRAVELLING PO]ST OFFICE' worn b/s on cover from Launceston to Perth. 100^T



Lot 2173

2173 C (B) B2 - Unframed 'TRAVELLING POST OFFICE/MY1/1893/[WA]' transit b/s on taxed cover from GB to "Southern Cross Hotel/Yilgarn" also with York duplex transit & very fine 27mm 'SOUTHERN CROSS/=WA=' arrival b/s, two repaired flap tears. 180^T



Lot 2174

2174 PS A- A1 - 22mm 'TRAVELLING-POST-OFFICE/ A /AU11/93/WA' very fine transit b/s on 1d Postal Card from GB, returned with 1/2d x5 - unnecessarily paying the letter rate - affixed over the original address & tied by 'FREMANTLE/=WESTERN AUSTRALIA= - F ' duplex with a second strike of the TPO cds of AU18/93 on the face. A remarkable two-way TPO item. 200^T



Lot 2175

2175 C A A2 - 26mm '[TRAV]ELLING POST OFFICE/OC26/98/GSR WA' transit b/s on free mail from Hobart to Coolgardie (b/s). 200^T

WESTERN AUSTRALIA - Travelling Post Offices (continued)

Lot Type Grading Description

Est \$A



Lot 2176

2176 PS B A1 - 26mm 'TRAVELLING POST OFFICE/NO28/96/GSR WA' very fine transit cds in blue unusually on the face of uprated Italian Postal Card to Perth, light discolouration.

250^T

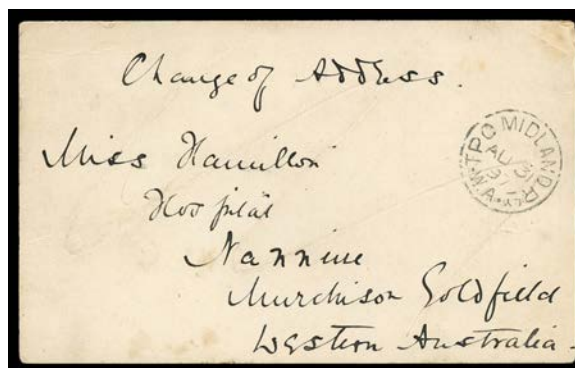
Lot 2177

2177 C A B1 - 22½mm 'TRAVELLING POST OFFICE/AP22/[00]/GSR WA' (no year slug) largely very fine transit b/s on Tasmanian OHMS wrapper with scarce 'GOVERNMENT STATISTICIAN/...' frank stamp in black.

125^T

Lot 2178

2178 PS B A1- - 21½mm 'TRAVELLING PO/JU2/98/WA' largely very fine transit b/s on USA 2c Postal Card to Perth, light soiling.

150^T

Lot 2179

2179 PS B A1 **MIDLAND RAILWAY:** 'TPO MIDLAND RLY/AU31/97/WA' very fine transit b/s on 1d Postal Card to GB with 1d tied by very fine 'NANNINE' cds, a few blemishes mostly on the address side. This is the example illustrated in *PMI*: **only one other example recorded.**

500^T

WESTERN AUSTRALIA - Travelling Post Offices (continued)

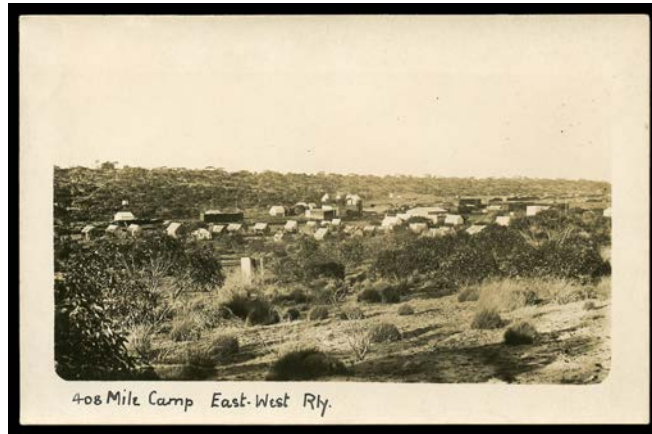
Lot Type Grading Description Est \$A



Lot 2180

2180 S C A2 TRANS RAILWAY: 'TPO TRANS RAILWAY/7SEP15/WEST[N AUSTRAL]IA' very fine strike on KGV 1d red (thinned). PO 26.1.1915; renamed Trans Australia Railway 1.3.1916. [A more complete but light strike sold at our auction of 19.5.2018 for \$373]

200^T



Lot 2181

2181 C A TRANS-AUSTRALIAN RAILWAY: South Australian *real photo* PPC "408 Mile Camp East-West Rly" (outdoor dunny in the foreground), used under cover. Message dated "13 July 17" states "...I'm kept on the move as the line proceeds...we have only another 25 miles to go to link up with W Aust..."

100^T



Lot 2182

2182 C A+ - Illustrated 'First/Overland/Mail/by/Trans-/Continental' cover with Perth machine cancel of 24OCT17 but to England so probably not carried on the train. **Superb!**

100^T



Lot 2183

WESTERN AUSTRALIA - Travelling Post Offices (continued)

Lot	Type	Grading	Description	Est \$A
2183	C	A+	- Illustrated 'First Mail to Cross Australia Overland/...' cover printed in light blue, to Melbourne with KGV 1d red tied by Perth machine of 24OCT17. Superb! [This is by far the finest such envelope we have seen: most have much lighter printing]	250 ^T

**Lot 2184**

2184	D	A A1+	- '634 MILE T.A.R./1AU36/W.A.' superb strike on KGV 2d. PO 1/4/1935; TO 2/6/1937; closed ? [An equally fine strike sold at the <i>Prestige</i> auction of 17.2.2012 for \$559]	300 ^T
------	---	-------	--	------------------

**Lot 2185**

2185	C	B A1+	- '634 MILE T.A.R./3AP37/W.A.' three superb strikes on KGV 1/2d orange x6 on cover to the USA, minor blemishes. PO 1/4/1935; TO 2/6/1937; closed ?	850 ^T
------	---	-------	--	------------------

**Ex Lot 2186**

2186	C	A/A+	- c.1930s Rose real photo PPCs printed in sepia x14 (including 'Meeting of Tracklayers...Oct 17 1917' & Prince of Wales at rear of the Observation Car), black & white x4 and tinted x6, unused & generally very fine to superb. [Excludes most of the common views] (24)	250 ^T
------	---	------	---	------------------