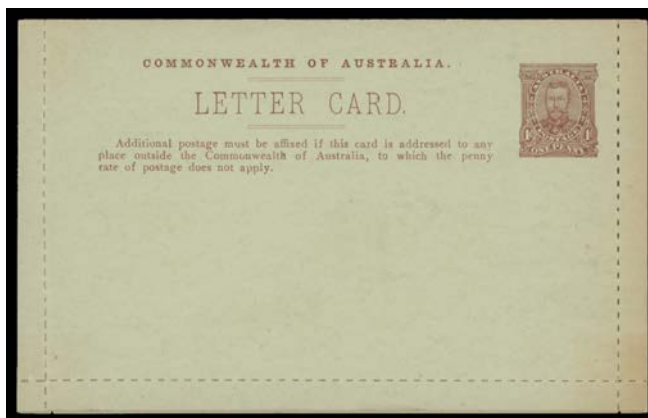


Lot Type Grading Description

Est \$A

**COMMONWEALTH OF AUSTRALIA - Postal Stationery - Letter Cards**

Lot 284

**284** PS B 1911-12 KGV Fullface 1d Rouletted 'EXHIBITION BLDGS/MELB VIC' in red-brown, minor discolouration of the margins at right, unused, Cat \$1000.

300

**COMMONWEALTH OF AUSTRALIA - Commemorative Covers/Datestamps**

350 C A- 1933 plain envelope with KGV 2d tied by superb strike of the 50mm 'POSTED ON BOARD FIRST AUSTRALIAN EXHIBITION SHIP TO THE EAST/TSS/NIEUW HOLLAND/.../Route: Australia, Java,/Singapore, Sumatra/and return' cachet in black, couple of minor blemishes.

150

**AUSTRALIAN PICTURE POSTCARDS**

See also World Postcards: Lots 697 to 726.



Ex Lot 574

**574** C A/B QUEENSLAND: 1915 *Panama-Pacific Exposition (San Francisco)* 'semi-official' issues with green frames 'Barron Gorge, Cairns Railway' (used under cover), 'Brisbane from the Observatory...', 'Examining Tobacco leaf...' 'Executive Bldgs...', 'Sandgate...', 'View overlooking Woombye...' & 'Whitsunday Passage', and coloured 'Roma Grapes, WQ', some soiling & minor blemishes, unused. (8)

300



Ex Lot 575

**575** C A/B - 1915 *Panama-Pacific Exposition (San Francisco)* 'semi-official' issues with green frames 'Barron Falls', (abrasion caused when stamp removed), 'Barron Gorge, Cairns Railway', 'Picking Grapes for Market, Roma' & 'View overlooking Woombye...', all used in America two with different *Panama California Exposition (San Diego)* slogan cancels from Berkeley or San Diego. A rare quartet. (4)

400

Lot Type Grading Description

Est \$A

**WORLD PICTURE POSTCARDS**

See also Australian Picture Postcards Lots 552 to 593; and Postcards sections under China and Russia.

699	C	A/B	<b>Chromolitho cards</b> for 1897 <i>Brussels International Exposition</i> x10 (three with a creased corner) & 1900 <i>Paris Universal Exposition</i> x9, fine to very fine & mostly unused. (19)	100
-----	---	-----	---	-----



**Ex Lot 702**

702	C		<b>CANADA:</b> Interesting group with Indians including 'Oldtime Warriors at the Stampede Winnipeg 1913' <i>real photo</i> , 'Sarcee Squaw', 'Stoney Indian Encampment', 'Blackfoot Indian Chiefs', etc, Western scenes noted 'Cowboys and Cowgirls at Calgary Exhibition', 'Branding Cattle...', etc, Baseball 'Stadium, Hanlon's Point, Toronto', Horseracing 'Woodbine Race Track, Toronto', Skiing & Ski Jumping, 'Skate Sailing, a new Canadian Sport', 'Ladies Hockey Team' (Ice Hockey), etc, then buildings, railways, a few multi-view cards plus 'Toronto University' silk card from 1911 <i>Canadian Exhibition</i> , a number used with some postmark interest, condition generally fine. (80+)	200
-----	---	--	---	-----

**SAMOA**



**Lot 1111**

1111	C	B	<b>1895</b> commercial cover to "Hobart/Tasmania Exhibition" with <i>Davis 1/- Bisect</i> tied by very fine 'APIA/APR/29/95/SAMOA' cds in blue, Sydney, Launceston & Hobart transit b/s & a largely superb arrival strike of the rare triple-oval 'POST OFFICE/16MAY95/TASMANIAN INTERNATIONAL EXHIBITION' b/s, horizontal fold at the base just clear of the backstamps, minor aging. An outstanding origin/destination item: mail into temporary post offices is rare. <i>Robert Odenweller Census #145.</i>	500
------	---	---	--	-----

**SWEDEN - Inwards Mail**



**Ex Lot 1189**

1189	C/CL		The lots in this section are from a collection formed by a European client. Many very scarce origin/destination covers are included.  <b>Canada</b> 1897 5c rate & 1896 'Canada's Great Exposition, Montreal 1896' promotional envelope printed on both sides & registered (a bit tired, with a reinforced central fold, still a spectacular item), <b>Chile</b> 1889 Prices Current, <b>Colombia</b> 1924 airmail with 'SCADTA' franking, <b>Finland</b> 1911 multiview PPC of Kuopio, <b>Italy (Sicily)</b> 5c Postal Card updated from 'MESSINA', <b>Samoa</b> 1904 with Yachts 10pf pair, and <b>Schleswig</b> 1920 with superb 'COMMISSION/SLESVIG /INTERNATIONALE' cachet in violet, condition variable. (8)	600 <sup>T</sup>
------	------	--	--	------------------

Lot	Type	Grading	Description	Est \$A
-----	------	---------	-------------	---------

**THAILAND**

1208	CL	B	1933 Ministry of Agriculture official cover by air to ".../Consul General for Siam/...World's Grain Exhibition and Conference/Regina.../Canada" with scarce solo franking of 1932 Rama I 1b indigo tied by untidy Bangkok cds, 'MONTREAL' transit b/s, very minor blemishes. [Scarce mail to an exhibition]	100
------	----	---	---	-----

**UNITED STATES OF AMERICA - Postal History**

1215	C	A-	1910 'Get your Congressmen to vote for the Panama-Pacific International Exhibition ...' multi-colour postcard sent to Germany with Washington 2c red tied Berkeley CA machine cancel also tying promotional 'Panama-Pacific' poster stamp alongside, a couple of minor blemishes. Message reads in part "... vote to your government to send an exhibit to SF. Then the other small town shall have no fair". The 'small town' was New Orleans, which took the fight to Congress in 1911 but eventually lost out. [See also Lots 574 & 575]	100
------	---	----	---	-----

**NEW SOUTH WALES****Lot 1587**

1587	P	A+	1867-72 De La Rue Designs 1872 6d die proof in green on glazed card (93x61mm). Gorgeous & superb! Ex De La Rue Archives. [Colour proofs were produced by De La Rue for display at the 1872 South Kensington Exhibition. A similar 10d proof in violet sold at our last auction for \$442]	400
------	---	----	---	-----

**SOUTH AUSTRALIA - Postmarks****Lot 1867**

1867	C	C	Jubilee Exhibition: 'JUBILEE EXHIBITION/JY13/87/S-A' very fine squared-circle on DLR 2d with a second fair strike alongside, to NSW with Manly arrival b/s, some toning & repaired tear at upper-left well clear of the datestamp. PO -.8.1887; closed -.3.1888. [Recorded JU13/87 to JA5/88 only: very few covers recorded]	100
------	---	---	--	-----



Lot Type Grading Description

Est \$A

**VICTORIA - Postmarks**

2097	C	A- A1	<b>Princes Pier:</b> 'PRINCES PIER, PORT MELB SC7/16NO34/VIC' & similar 'ALL AUST EXHBTN MELBNE N3/10NO34' cds on registered covers with plain provisional or Exhibition 'R' labels, the first with two different NSW TPO b/s. (2)	180
------	---	-------	--	-----

**WESTERN AUSTRALIA - Postal Stationery - Franks****Lot 2193**

<b>2193</b>	PS	B	<b>COOLGARDIE EXHIBITION:</b> 'WESTERN AUSTRALIAN EXHIBITION/COOLGARDIE 1898' fine strike in purple on 1899 envelope to Perth, very fine 'TPO EGF/ 3 /AU31/99/WA' transit b/s, light spotting on the reverse.	300
-------------	----	---	---	-----