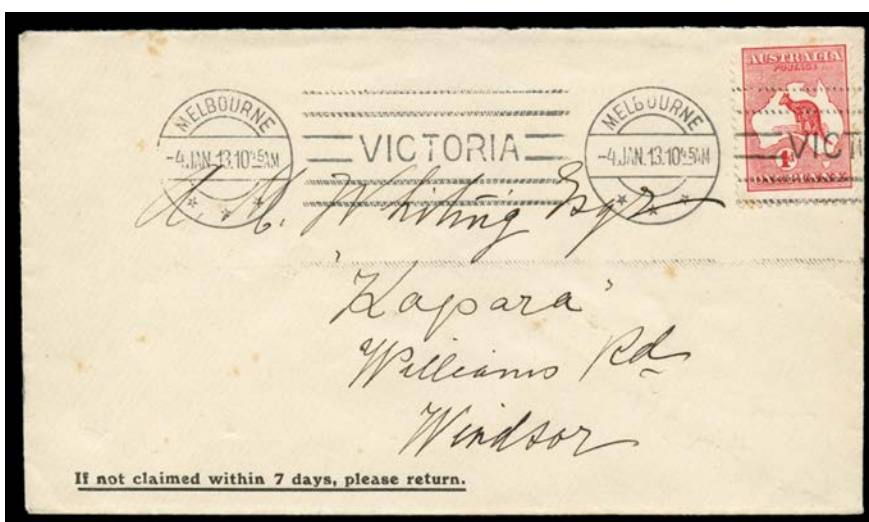


Lot	Type	Grading	Description	Est \$A
-----	------	---------	-------------	---------

COMMONWEALTH OF AUSTRALIA - General & Miscellaneous Lots

2	**/*OC		Accumulation with a few Pre-Decimals noted Navigators set used, then Decimals 1966-82 complete mint in <i>Seven Seas</i> pages with M/Ss (ex Cook) and a few booklets, later issues in packets as received, plus Yearbooks 1981 x2, 1982-86, 1987 Expo edition, 1988 x2, 1989, 1991, 1992 x2, other Australia Post product and a few FDCs, thematic interest, condition generally fine. Weighs 25kg. (100s)	250
4	*OVC		Bulk used accumulation including Kangaroos & KGV Heads in quantity, then Pre-Decimals & Decimals, some set out on pages, others loose in glassines, potential postmark interest, also Postage Dues, Booklets & M/Ss CTO, a few mint plus a box of FDCs, mostly fine. Weighs 10kg. Lots of fun in here! (1000s)	300
19	*OC		Carton of albums including FDCs 30c Small Cook (addressed) & Gold Medallists, mint BCOF set, etc.	200
20	**/*OCPS		Huge accumulation with used Kangaroos & KGV Heads then later in quantity including some on paper, Decimals mint in packets & Yearbooks with substantial face value, big hoard of FDCs and PSEs heavily duplicated in places, lots of commemorative cancels plus some unused, noted 1970 Expo, Royal Visit & Grasslands official <i>Australia Post</i> FDCs unaddressed, also Worldwide including Australian Territories, NZ, GB, Fiji, Gilberts/Kiribati extensive 1976-80s mint collection with official & specimen overprints (lots of thematic interest), Europe & USA in old albums, etc, also small box of coins including a few Uncirculated sets, condition variable but mostly fine. Weighs 96kgs. Leave lots of time to view this one. (1000s)	500

COMMONWEALTH OF AUSTRALIA - Kangaroos - First Watermark

Lot 43

43	F	A-	1d red Die I (short corner perf at U/L) on apparently commercial cover with 'H Best, Masseur' imprint on the flap & tied by superb impression of the Melbourne <i>Krag</i> machine cancel of 4JAN13, being the First Day of Issue in Melbourne, minor tonespots. [The ACSC states at least eleven FDCs cancelled at Sydney 2.1.1913 are recorded, Cat \$15,000. Melbourne FDCs are probably scarcer but are neither listed nor priced]	1,000
----	---	----	---	-------

COMMONWEALTH OF AUSTRALIA - Decimal Issues

197	**/O/C	A	Accumulation of 1980s-90s issues in packets as purchased including stamp packs & booklets, M/Ss, FDCs, PSEs, Maximum Cards, etc, also 'Leather' Yearbooks 1987-95 & other Australia Post 'product', plus bags of used on piece and some foreign material, thematic interest. Weighs 22kg. (100s)	300
208	PS	A	PSEs in carton, unused or cancelled FDC with up to ten of each issue. Weighs 9kg. (100s)	100

COMMONWEALTH OF AUSTRALIA - Postal Stationery

Ex Lot 266

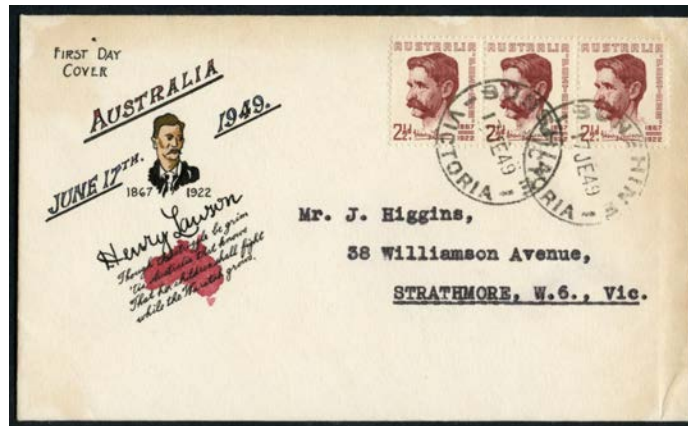
266	PS/C		Album of mostly unused material with Postal Cards including Coronation x3 and 'OS'-in-the-Die KGV 1 1/2d red-brown (creased), Registration Envelopes & Wrappers, generally fine to very fine; also an album of FDCs & Commemorative covers. (150+)	500
-----	------	--	--	-----

Lot Type Grading Description

Est \$A

COMMONWEALTH OF AUSTRALIA - First Day Covers

354	C		See also Penny Kangaroo First Day of Issue at Melbourne: Lot 43. 1930s-60s selection with variety of producers including 1937 NSW Sesquicentenary on multi-coloured "Northern" Series cover, 1953 Produce Food strips on single covers x2, a number of registered items, a few 'First Day Cards' including 2/- green Olympic Publicity and a particularly attractive Cobb & Co illustrated card, some unaddressed, also various non-FDC commemorative covers & cancels noted 1948-49 Pan-Pacific Scout Jamboree on five covers with differently-coloured cachets & 1950 Stamp Exhibition items, etc, condition generally fine. (100+)	200
-----	---	--	--	-----

**Lot 355**

355	C	B	1949 Henry Lawson 2½d strip of 3 tied by 'SUNSHINE/17JE49/VICTORIA' cds, hand-illustrated perhaps by <i>Eric Ogden</i> but not signed, minor blemishes.	120
356	C/CO	A/A-	1970 National Development 9c Bauxite pair on oversize <i>Alcoa</i> FDC with enclosed promotional booklet for the company; also <i>Qld Geographical Society</i> 1946 Leichhardt x2 different, one with QGS Leichhardt brochure, and 1946 Mitchell x3 different, one with QGS fundraising brochure. Unusual lot. No reserve. (7 items)	50
357	C	A/A-	ARCHIBALD MOUBRE GUTHRIE: 1954-59 group including Royal Visit registered, Railways block of 4, ANARE block of 4, Olympic Propaganda 2/- blue, US Memorial block of 4, SA Responsible Government block of 4, QEII 7d block of 4, War Memorial pair, etc, several of the later covers are generics, five are unaddressed. (21)	150
358	C	B	RA KINGSTON: 1946 Peace set tied to cover with printed text by 'CHIEF PARCELS OFFICE/ 5 /18FE46/NSW' cds (rarely seen on cover), faint toning. Cover producer not recorded by <i>Moore et al.</i>	100
359	C	B/D	RN NOLAN: 1945 Duke of Gloucester set tied to generic cover overprinted with issue-specific text by Sydney cds of 19FE45, registered, a little aged; and a second example unaddressed but with faults. (2)	100

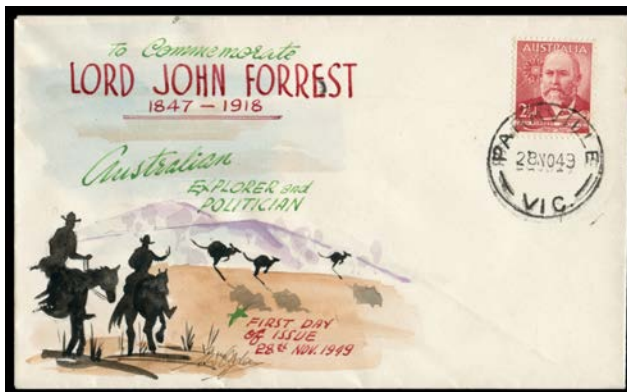
**Lot 360**

360	C	A	ERIC WILLIAM OGDEN: <i>Eric Ogden</i> produced a small number of FDCs for most issues between 1949 & 1965. They were variously hand-painted or screen-printed entirely or in part. All those offered here are signed "E Wm Ogden" & are unaddressed. 1949 Henry Lawson 2½d tied to handpainted cover by 'BRIGHTON RD S3/17JE49/ VIC-AUST' cds. [This was the first issue for which <i>Ogden</i> produced FDCs. Six covers are known, all with different designs. <i>Ogden's</i> handpainted covers have often sold for more than \$500 each]	300
-----	---	---	---	-----

COMMONWEALTH OF AUSTRALIA - First Day Covers (continued)

Lot Type Grading Description

Est \$A



Lot 361

361 C A - 1949 Sir John Forrest 2½d tied to handpainted cover by 'PARKVILLE/28NO49/VIC' cds.

300



Lot 362

362 C A- - 1950 Aborigine 8½d tied to handpainted cover by 'PARKVILLE/14AU50/VIC' cds, a few tiny tonespots.

250



Lot 363

363 C A - 1952 Scout Jamboree 3½d tied to screenprinted cover by 'COBURG N13 No 1/19NO52/VIC-AUST' cds.

200

364 C A - 1953-56 QEII Definitives 3d green tied to screenprinted cover by 'COBURG N13 No 1/17JE53/VIC-AUST' cds.

100



Lot 365

365 C A- - 1953-56 QEII Definitives 3½d red on handpainted cover with small photograph of the Queen inserted, tied by 'COBURG N13 No 1/21AP53/VIC-AUST' cds, endorsed "The first stamp portraying the Queen, issued on Her birthday...", a few minor tonespots. [A similar cover for the 3d sold at the Prestige auction of 11.6.2008 for \$920]

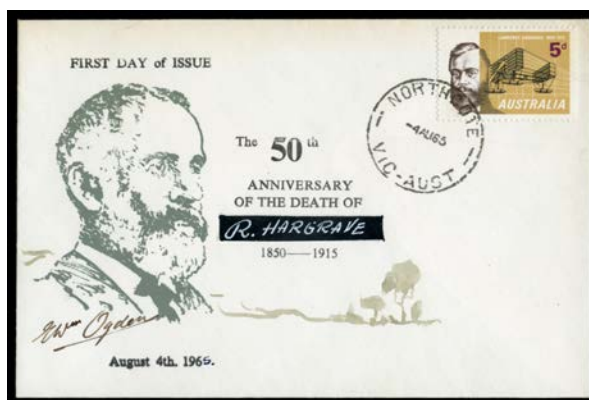
350

366 C A - 1954 Red Cross Society 3½d tied to screenprinted cover by 'CARLTON STH N.3/9JE54/VIC-AUST' cds.

100

COMMONWEALTH OF AUSTRALIA - First Day Covers (continued)

Lot	Type	Grading	Description	Est \$A
367	C	A	- 1954 Railway Centenary 3½d Trains tied to handpainted cover by 'THORNBURY/13SE54/VIC' cds. [Unusually, the design is incomplete, with details of the trains not added]	150
368	C	A/A-	- 1955-63 Issues on screenprinted generic covers with Kangaroos Hopping to Left comprising SA Stamp Centenary, SA Self-Government, Broken Hill, Animals 6d - with Numbat pencil-sketch - 11d pair & 1/2d, Flowers 1/6d, NT Centenary, Melbourne Cup, Queensland Stamp Centenary, AAT 5d blue, and Blue Mountains, a few minor blemishes. (12)	350
369	C	A	- ERIC WILLIAM OGDEN: 1955 Rotary Half-Century 3½d Globe & Flags tied to screenprinted cover by 'MORELAND N13/23FE55/ VIC-AUST' cds.	100
370	C	A	- 1955 YMCA Centenary 3½d tied to screenprinted cover by 'COBURG N13/10AU55/VIC-AUST' cds.	100
371	C	A	- 1955 Nursing/Florence Nightingale Centenary 3½d pair tied to screenprinted cover by 'COBURG/21SE55/ VIC-AUST' cds.	100
372	C	A/A-	- 1957-64 Christmas Issues complete except for 1963 - the 1958 duo on separate covers - tied to screenprinted covers by various cds, a few blemishes. (8)	450
373	C	A/A-	- 1958-63 Issues on screenprinted generic covers with Trees & Kangaroos Hopping to Right comprising Kingsford Smith, Flowers 2/5d & 3/-, Queensland Self-Government, Post Office Sesqui-Centenary, Animals 8d, Guiding, Colombo Plan, Inland Mission, CWA & Canberra Anniversary, a few minor blemishes. (11)	350
374	C	A	- 1959-63 Flowers 2/- Flannel Flower tied to screenprinted cover by 'CARLTON N3/8AP59/VIC-AUST' cds.	100
375	C	A	- 1961 Dame Nellie Melba 3½d tied to screenprinted cover by 'COLLINGWOOD N5/20SE61/VIC-AUST' cds.	100
376	C	A	- 1963 Red Cross Centenary 5d tied to screenprinted cover by 'COBURG N13/8MY63/ 4 /VIC-AUST' cds.	100
377	C	A+	- 1964 Christmas screenprinted 'Christmas generic' cover. Superb!	100
378	C	A	- 1965 Sir John Monash 5d tied to screenprinted cover by 'NORTHCOTE/23JE65/VIC' cds.	100



Lot 379

379	C	A	- 1965 Lawrence Hargrave 5d tied to screenprinted cover by 'NORTHCOTE/4AU65/VIC-AUST' cds, inscribed 'R HARGRAVE' in error. [The 1965 Christmas stamp was the last issue for which Ogdén produced FDCs]	100
-----	---	---	--	-----

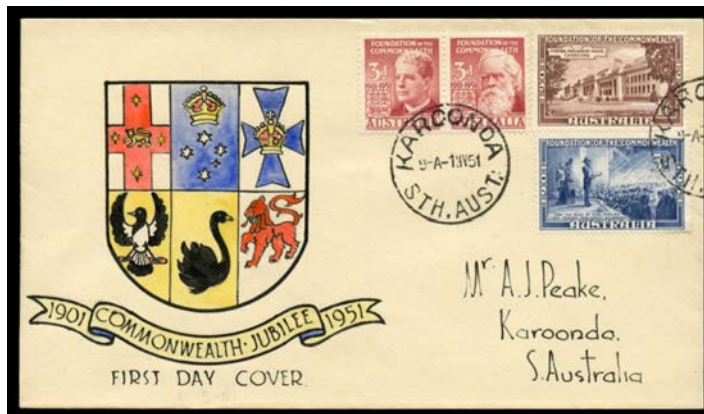


Ex Lot 380

380	C	A/A+	JACK PEAKE: Group with 1950 8½d Aborigine hand-painted, stencilled illustrations for 3½d Swan x7, Railways x2, USA Memorial x16 & YMCA x7, also EW Ogdén for 1954 Red Cross & 1955 Rotary plus generics for Flying Doctor & 8d Tiger Cat x2, mostly unaddressed & generally very fine. (38)	250
381	CL	A	- This & the following covers were all hand-painted by noted Adelaide illustrator, the late AJ (Jack) Peake . Jack's work, much of which is highly artistic, gained a new following from the sale of covers from his estate by <i>Prestige</i> between 2007 & 2012. Many sold for more than \$500 each, and several topped the \$1000 mark. Unless stated otherwise, all covers are very fine & unaddressed. 1951 Federation Jubilee complete set tied to long cover - Parliament House & State Emblems - by 'KAROONDA' cds of 1MY51.	150

COMMONWEALTH OF AUSTRALIA - First Day Covers (continued)

Lot Type Grading Description Est \$A



Lot 382

382	C	A	- 1951 Federation Jubilee complete set tied by 'KAROONDA' cds of 1MY51. Sold in 2010 for \$506.	200
383	CL	A	- 1953 Tasmania Sesquicentenary 3½d se-tenant pair & 2/- tied to three long covers (240x105mm) with different Port Arthur illustrations by Gladstone cds of 23SE53. (3)	500



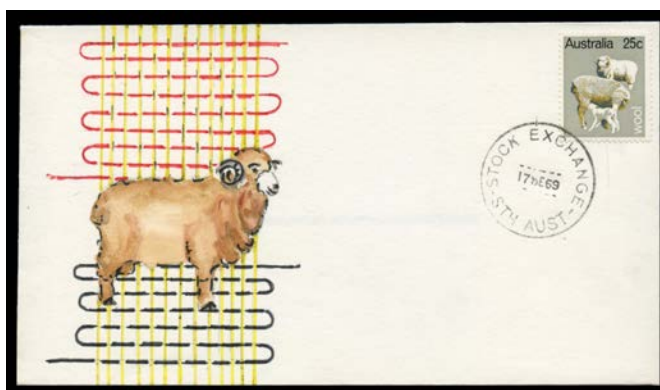
Lot 384

384	C	A	- 1958 Australian War Memorial 5½d se-tenant pair tied by Stock Exchange Adelaide cds of 10FE58.	150
------------	---	---	--	-----



Ex Lot 385

385	C	A	- 1968 State Floral Emblems 6c to 30c on individual covers each tied by Stock Exchange (SA) cds of 10JY68, the 25c with 'sticky tape' residue on the flap. (6)	300
------------	---	---	--	-----



Ex Lot 386

386	C	A	- JACK PEAKE: 1969 Primary Industries 7c to 25c on individual covers each tied by Stock Exchange (SA) cds of 17SE69. (4)	280
387	CL	A	- 1975-78 Christmas issues tied to four long covers by Hindmarsh FDI cds of the appropriate dates. (4)	250

COMMONWEALTH OF AUSTRALIA - First Day Covers (continued)

Lot Type Grading Description

Est \$A

**Ex Lot 388**

388	C	A	- 1984 Christmas 24c to 85c tied to separate covers by Hindmarsh FDI cds of 31OCT1984. (4)	280
389	CL	A	- 1984 Aboriginal Art set tied to two covers by Hindmarsh FDI cds of 7NOV1984. (2)	100
390	CL	A	- 1987 Bicentenary of Settlement - First Fleet at Teneriffe - 36c se-tenant pair & \$1 tied by Hindmarsh FDI cds of 3JUN1987. [Evocative illustration of ship approaching port]	100

**Lot 391**

391	C	A	STANDARD STAMP CO: 1949-50 Arms £2 green tied to generic cover to New York by very fine 'GREENSLOPES REPAT HOSP/16JA50/QLD-AUST' cds. <i>Ex George Lang</i> : sold at the <i>Prestige</i> auction of 13.6.2009 for \$1955.	1,000
------------	---	---	---	-------

REST OF THE WORLD - GENERAL and MISCELLANEOUS LOTS

616	CPS		Worldwide covers assortment noted Malaya 1940 registered airmail to Sydney with KGVI 30c & 40c, Netherlands 1902 to Cape Colony with Boer War 'OPENED UNDER MARTIAL LAW' censor label, New Zealand including 'St Heliers, Auckland' <i>Zieher-type</i> Stamps PPC published by <i>Muir & Moodie</i> & 1936 Health 1d Lifebuoy on illustrated FDC, Norway 1938 registered to Victoria sealed with Red Cross cinderella, Pacific Islands, USA 1936 registered airmail to Queensland "per SS Queen Mary and Air Mail England-Australia", Venezuela 1898 "British Consulate, Caracas" to London with 25c, plus range of commemorative & flight covers, etc, condition variable. (140+)	250
638	**/*C		1980 Olympic Games Rowland Hill collection of stamps, M/Ss and covers in four volumes, plus <i>Paramount International Coin Corporation</i> FDC collection in four volumes. Something for the sports fanatic. (100s)	150

Lot Type Grading Description

Est \$A

GREAT BRITAIN - Postal History

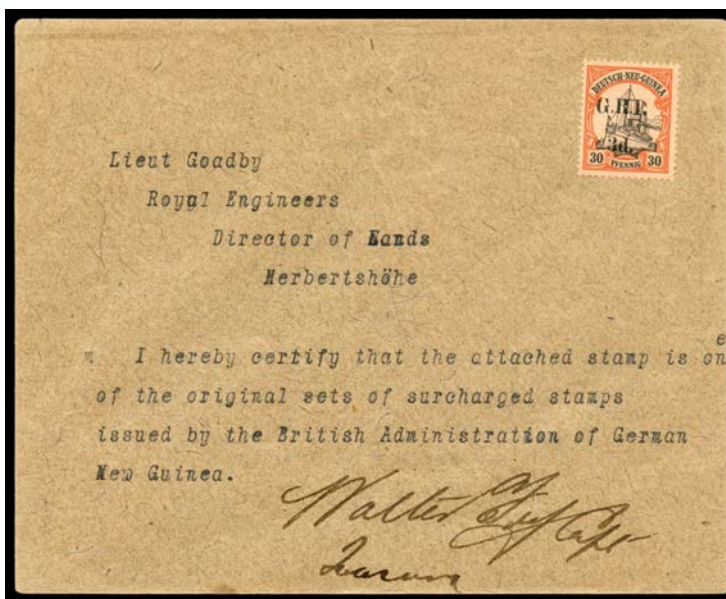


Ex Lot 890

890 C A/B **FIRST DAY COVERS:** Printed types for Jubilee set registered, KGVI 1937 1/2d 1d & 2 1/2d, Coronation 1 1/2d, Stamp Centenary x2 sizes (one registered) & Victory x3 different (two registered), and plain covers for 1924 Wembley, KGV Photogravure 4d & 9d, Stamp Centenary & 1948 Wedding (registered), generally very fine, Cat £1800 plus the KGV Photogravures that are unlisted in *Gibbons*. (12)

750

NEW GUINEA - 'G.R.I.' Overprints



Lot 982

982 C A **1914-15 6mm Spacing '3d.'** on 30pf black & orange/buff SG 8 (Cat £475) uncanceled on cover with typed 'I hereby certify that the attached stamp is one of the original sets of surcharged stamps issued by the British Administration of German New Guinea.' & signed "Walter P Fry Capt/Treasurer".

750^T

Lot	Type	Grading	Description	Est \$A
-----	------	---------	-------------	---------

NEW ZEALAND - Postal History

1081	PS	B	POSTAL CARDS: 1876 1d brown with printed notice on the reverse '...a specimen of the New Zealand Post Card, which will be brought into use in this Colony on the 1st of November next/...20th October 1876', minor blemishes mostly on the address panel.	250
------	----	---	--	-----

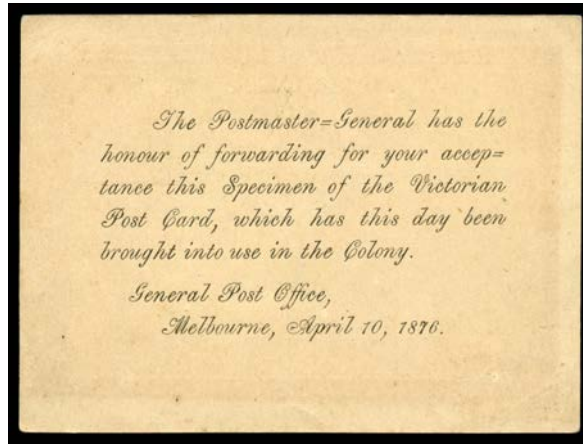
PITCAIRN ISLANDS - Postal History

1103	C		1933-38 New Zealand Postal Agency period covers each with 'PITCAIRN ISLAND/NZ POSTAL AGENCY' cds including 1933 with GB KGV 1½d brown x3 crossed for registration and tied by cds but endorsed "Received (without contents) at Southampton in mail from Pitcairn Island" and with 'R/Southampton 49' label added (aging marks), 1936 to GB with cds on back and GB KGV Jubilee ½d tied 'CRISTOBAL CZ/PAQUEBOT' duplex, 1938 <i>Shaw Savill Line</i> envelope to Canada with "M.E.King on board/R.M.S. Mataroa" return address and NZ KGV ½d pair re-directed with Vancouver transit and 'CANADIAN AUSTRALASIAN LINE' label on face, also 1938 to Auckland endorsed "PITCAIRN Island" without the cds but unusually with 'PITCAIRN/Radio/ Communications/...' h/s in blue at L/L and NZ KGV 1d red x2 tied on arrival by Auckland machine cancel, condition variable. (12)	300 ^T
------	---	--	--	------------------

TASMANIA - Postmarks

1976	C	(A-)	Launceston: 'REGISTERED BRANCH/9MY27/LAUNCESTON' on Canberra 1½d block of 4, large 'Launceston....' R label, light central fold. First Day Cover for the stamp.	100 ^T
------	---	------	--	------------------

VICTORIA - Postal History



Lot 2127

2127	PS	A-	POSTAL CARDS: 1876 Laureate 1d mauve HG 1 with printed notice on the reverse '...this Specimen of the Victorian Post Card, which has this day been brought into use in the Colony/...April 10 1876', minor blemishes on the address panel.	250
------	----	----	---	-----