

Lot Type Grading Description

Est \$A

COMMONWEALTH OF AUSTRALIA - Other Pre-Decimals

Most of the untaxed material in this section is from the collection formed by the late Julian Sterling of Melbourne.



Ex Lot 147

147	**/**		1927 Opening of Federal Parliament House selection including block of 39, booklet pane of 8, punctured 'OS' single CTO & an unmounted mint block of 4, and a vertical pair <i>Imperforate Between</i> ACSC #132b (the lower unit damaged; Cat \$5000). (61)	1,000
148	**	A/B	- complete sheets of 80 from Plates 2, 4, 6 & 7, plated by listed varieties on sheets, and an unknown sheet with large flaw on [Pos 66], a few minor blemishes, unmounted. (5 sheets)	350
149	**		- 1½d three complete sheets of 80, unmounted.	150



Ex Lot 150

150	**/*OC	A	- selection including <i>Flag at Half-Mast & Flaw in First 'A' of 'AUSTRALIA'</i> , single with <i>Double Perfs at Right</i> , complete booklet + booklet panes & covers x2, Greetings from Canberra cards x3 (one CTO on First Day of Issue), etc. (23 items)	400
-----	--------	---	--	-----



Lot 151

151	*	(A)	- 1½d vertical pair <i>Imperforate Between</i> ACSC #132b (SG 105a), above-average centring for this error, ironed-out creasing at lower-left corner, very lightly mounted & very fresh, Cat \$5000 (£5500). [The ACSC states "22 pairs have been identified...[including] a block of 4 in the <i>Royal Collection</i> & a pair in the <i>Australia Post Archives</i> ..." Most pairs have obvious faults. <i>Arthur Grey's</i> pair - minor crease at upper-left - sold for \$5078]	2,000 ^T
-----	---	-----	--	--------------------

COMMONWEALTH OF AUSTRALIA - Other Pre-Decimals (continued)

Lot Type Grading Description

Est \$A



Lot 154

154 ** A - 1927 Opening of Federal Parliament House 1½d complete sheet of 80 (10x8) with large-part *Plate Number '9'* ACSC #132zh, the plate block is extremely well centred, unmounted, the plate block Cat \$1250 (mounted).

500



Lot 159

159 ** A- - 1927 Opening of Federal Parliament House 1½d upper-left corner block of 4 with unusually large margin and complete *Plate Number '12'* at U/L ACSC #132zk, characteristic rough perfs, a couple of insignificant faint bends, unmounted, Cat \$750+ (mounted). As fresh as a daisy!

300^T

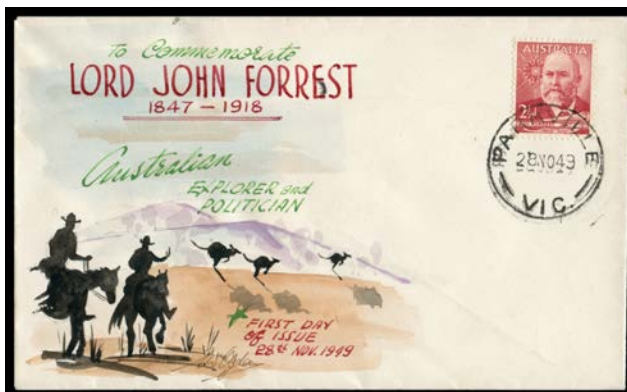
Lot	Type	Grading	Description	Est \$A
-----	------	---------	-------------	---------

COMMONWEALTH OF AUSTRALIA - Decimal Issues

229	F	A	2013 Government Houses 60c Western Australia self-adhesive as SG 4004 completely <i>Imperforate</i> on small commercial piece. With a normal stamp for comparison.	100
-----	---	---	---	-----

COMMONWEALTH OF AUSTRALIA - First Day Covers

359	C	B/D	RN NOLAN: 1945 Duke of Gloucester set tied to generic cover overprinted with issue-specific text by Sydney cds of 19FE45, registered, a little aged; and a second example unaddressed but with faults. (2)	100
-----	---	-----	---	-----



Lot 361

361	C	A	ERIC WILLIAM OGDEN: 1949 Sir John Forrest 2½d tied to handpainted cover by 'PARKVILLE/28NO49/VIC' cds.	300
------------	---	---	---	-----

381	CL	A	JACK PEAKE: This & the following covers were all hand-painted by noted Adelaide illustrator, the late AJ (Jack) Peake . Jack's work, much of which is highly artistic, gained a new following from the sale of covers from his estate by <i>Prestige</i> between 2007 & 2012. Many sold for more than \$500 each, and several topped the \$1000 mark. Unless stated otherwise, all covers are very fine & unaddressed.	
-----	----	---	--	--

1951 Federation Jubilee complete set tied to long cover - Parliament House & State Emblems - by 'KAROONDA' cds of 1MY51.

150



Lot 382

382	C	A	- 1951 Federation Jubilee complete set tied by 'KAROONDA' cds of 1MY51. Sold in 2010 for \$506.	200
------------	---	---	---	-----

WORLD PICTURE POSTCARDS

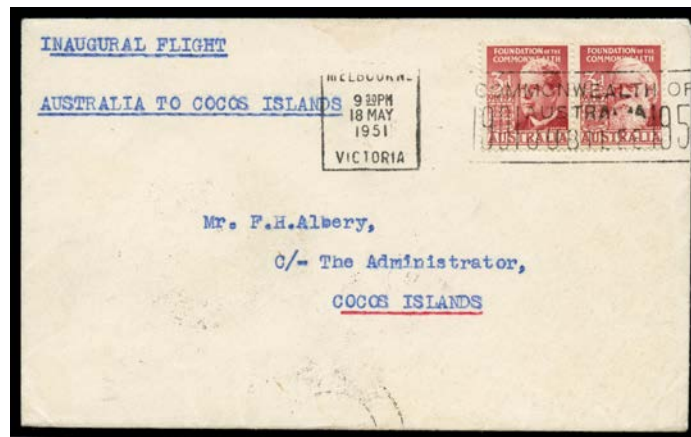
See also *Australian Picture Postcards* Lots 552 to 593; and *Postcards* sections under *China* and *Russia*.

724	C		SUBJECTS POLITICS: British humorous group including John Bull set of 6 by <i>Arthur Moreland</i> & four by <i>Faulkener & Co</i> , condition variable. (22)	120
-----	---	--	--	-----

CANADA**Lot 755**

755 ** A **1972 Definitives** 2c Prime Minister Henri Charles Wilfrid Laurier block of 21 (7x3) from the U/L corner of the sheet with *Canadian Bank Note Imprint* in the top margin, eight units affected by *Major Perforation Error* caused by pre-perforating paper folds, unmounted. **Spectacular!**

500

COCOS ISLANDS - Postal History**Lot 822**

822 C A **1951** 1951 (May 24) cover from cover endorsed "Inaugural Flight/Australia to Cocos Islands" with Federation 3d setenant pair tied by Melbourne Federation slogan of 18MAY/1951, to "FH Albery/co The Administrator/Cocos Islands", largely superb strike of the second 'C&W LTD/30MAY1951/COCOS' arrival b/s: see AAMC #1273b, Cat \$1250 (2008). [The flight departed Sydney 30.5.1951 & went via Darwin & Jakarta. Lack of publicity resulted in only 170 **grams** of mail - fewer than 20 covers - being carried from Sydney. *Colin Riddell's* similar cover sold for \$1165]

1,000^T**AUSTRALIAN COLONIES/STATES - General & Miscellaneous Lots**

1517 L A/A- **TELEGRAPHS:** Government papers **NSW** 1858 'Electric Telegraphs' & 1861 'Telegraphic Communication with Europe', and **Tasmania** 1875 'Submarine Telegraph Receipts & Expenditure'. (**3 documents**)

150

NEW SOUTH WALES**Lot 1593**

1593 * A C2 **1888-90 Centennial High Values** Wmk '5/ ' (Sideways) 20/- Governors dull blue SG 262, characteristic irregular perfs, large-part o.g., Cat £750.

300

NEW SOUTH WALES (continued)

Lot Type Grading Description

Est \$A



Lot 1594

1594 * A B1 - 1890 5/- Map Perf 10 & 20/- Governors Perf 11 SG 263da & 264c, large-part o.g., Cat £800.

400^T

Lot 1600

1600 ** A- B2 1905 Crown/A Chalk-Surfaced Paper 20/- Governors SG 350b Perf 11x12 ACSC #N75A marginal example from the top of the sheet with part of the marginal inscription, one short perf at the base, full unmounted o.g., Cat \$300+ (£375+) for mounted.

500^T**QUEENSLAND - Postal History**

Lot 1740

1740 C B 1895 (Nov 23) local cover to the Survey Office with scarce franking of Sidefaces Imperf 1d pair SG 187a (creased before being affixed; Cat £300 x15+ on cover) tied by BN '369' & 'PARLIAMENT HOUSE' cds, Brisbane arrival b/s, reduced at the base & a little soiled. Ex Colonel Harrie Evans: acquired at the Prestige auction of 4.5.2002 for \$1344.

500

Lot Type Grading Description

Est \$A

QUEENSLAND - Mail to Countries other than Great Britain

Lot 1763

1763 PS C **MALAYA:** 1899 (May 26) use of 1d Scenic Postal Card 'Parliament House, Brisbane' with BN '215' & superb 'SOUTH BRISBANE' cds, to "Kwala Lumpur/Selangor/Straits Settlements", taxed with large '5/CTMS/T' h/s, very fine 'SINGAPORE' & 'KLANG' transit & 'KUALA LUMPUR/JY1/1899' arrival cds, characteristic discolouration of the board. [Selangor was one of the four Federated Malay States, and not part of the Straits Settlements]

150

SOUTH AUSTRALIA - Official Stamps

Lot 1830

1830 F A **DEPARTMENTALS: CHIEF SECRETARY:** 'C.S.' in Red on Rouletted 2d vermilion, GPO cds of JY1/68. Rated RR.

100



Lot 1836

1836 H A - **HOUSE OF ASSEMBLY:** Black 'H.A.' on Perf 10 1d deep green, heavy GPO cds. Rated RRRR. [The 'Tamiami' example sold for \$489]

350

TASMANIA - Postmarks

1976 C (A-) **Launceston:** 'REGISTERED BRANCH/9MY27/LAUNCESTON' on Canberra 1½d block of 4, large 'Launceston....' R label, light central fold. First Day Cover for the stamp.

100^T

Lot Type Grading Description

Est \$A

WESTERN AUSTRALIA - Postal History**Lot 2235****2235** C

(B)

1877 (Nov 7) OPSO large-part entire to "Edward Higham/Fremantle" with Perth cds & '[crown]/PAID' handstamp, reverse-folded & reused to the same person one week later, some creasing & internal reinforcing. A most unusual item. The outgoing-portion is a largely printed form advising an application for Crown Lands has been accepted & requesting payment of £13/10/- "less Remission Certificate £10" for a net amount of £3/10/-. The second usage was a receipt for £3/10/- signed "A O'Grady Lefroy". [Anthony O'Grady Lefroy arrived 1843 & was *Colonial Treasurer* for a remarkable 34 years 1856-1890. *Edward Higham* arrived 1853 & developed business interests, becoming a Fremantle Councillor & Member of the Legislative Council (MLC)]

600