

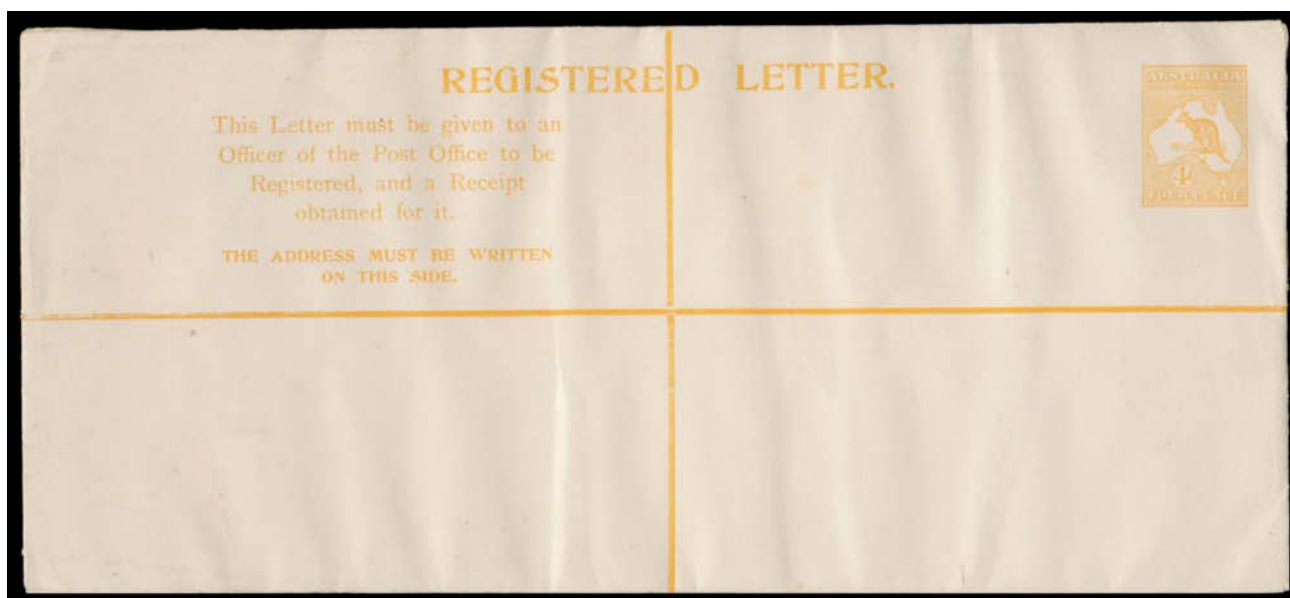
Lot Type Grading Description

Est \$A

COMMONWEALTH OF AUSTRALIA - Postal Stationery**Ex Lot 266**

266 PS/C **Album** of mostly unused material with Postal Cards including Coronation x3 and 'OS'-in-the-Die KGV 1½d red-brown (creased), Registration Envelopes & Wrappers, generally fine to very fine; also an album of FDCs & Commemorative covers. **(150+)**

500

COMMONWEALTH OF AUSTRALIA - Postal Stationery - Registration Envelopes**Ex Lot 333**

| | | | | |
|------------|----|---|--|-----|
| 333 | PS | | Unused selection including Kangaroo 4d 'REGISTERED LETTER' both sizes, KGV 4d with Red Star & with Orange Star, 4½d on 5d #RE17 & 17d (gum removed from flap), 4½d Violet Text & Red Text both with <i>No Top to Crown</i> , Oval 4½d both sizes, 5d on 4½d 18mm Spacing both sizes, 5d #RE26, etc, 'SPECIMEN' Overprint on KGV I 1/0½d & QEII 1/7d, also Christmas Island 30c & PNG 1/7d, generally very fine, Cat \$3500+. (19) | 750 |
| 334 | PS | | Used selection comprising Kangaroo 4d with boxed 'REGISTERED' & 4d 'REGISTERED LETTER' with <i>Large 'T' in 'MUST'</i> x2, Sideface 4d orange/white x2 (one to Canada with 1d Engraved but damaged), 5d with Red Lines, 5d with Text on Back 'Price 6d...', 'FIVE/PENCE' on Sideface 4½d violet opened-out & resealed, 4½d with 'envelope' on back & 4½d with Red Lines, KGV Oval 5d uprated with 1d green & 'COMPENSATION' h/s, QEII 2/5d £50 (\$100) with <i>Helecon Ink</i> (opened-out) & 24c, condition variable, Cat \$2250+. (13) | 300 |
| 335 | PS | | Unused selection comprising Kangaroo 4d with boxed 'REGISTERED', Sideface 4d on White (minor spotting), 5d with Red Device on Flap & 4½d both CTO, KGV Oval 5d, QEII 1/7d on White x2 (one with large 'SPECIMEN' Overprint in red), 2/5d & 24c with 'SPECIMEN ONLY' h/s, fine to very fine, Cat \$2000+. (9) | 350 |
| 336 | PS | B | 1913-14 Kangaroo 4d with 'Price Fourpence Halfpenny...' at Top Setting 1 ACSC #RE4A, 'TAMWORTH/NSW' cds and red & black RL, minor blemishes mostly on the reverse, Cat \$400. Underrated. | 120 |
| 337 | PS | A | 1916 on Old NSW Stock KGV 4d orange with Orange Device Obliterating the Stamp Box on the Flap (Setting 2; 115mm) ACSC #RE7B, unused, Cat \$500. | 100 |

COMMONWEALTH OF AUSTRALIA - Postal Stationery - Registration Envelopes (continued)

Lot Type Grading Description

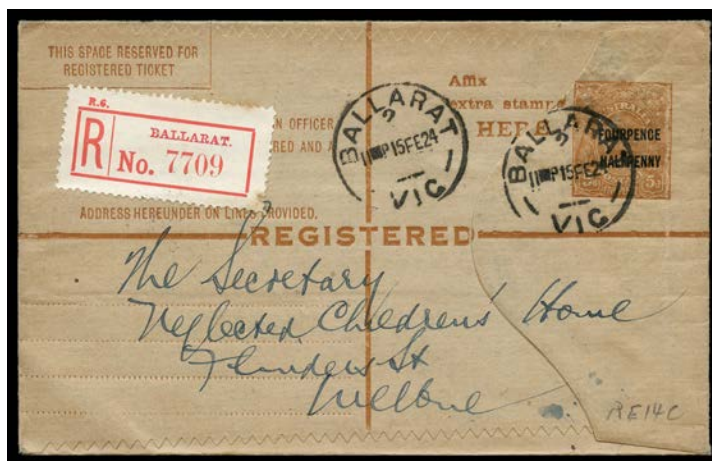
Est \$A



Lot 338

338 PS B **1919 New Layout with Compensation Text at the Base KGV 4d orange ACSC #RE9, KGV 1/2d green added & tied by 'PADDINGTON/-MR20/=NSW=' cds, flap missing, Cat \$1500.**

300



Lot 339

339 PS A **1923 'FOURPENNY/HALFPENNY' on 5d brown with the overprinted text on the reverse beginning 'Price 6d...' on De La Rue stock ACSC #RE15, 'BALLARAT/ 2 /15FE24/VIC' cds & red/white R label, Melbourne arrival b/s, Cat \$500. [An example sold at our auction of 24.11.2018 for \$512]**

250

COMMONWEALTH OF AUSTRALIA - Airmail Covers - Commercial

We are pleased to offer the covers to overseas destinations assembled by our old friend John Booker from England.



Lot 543

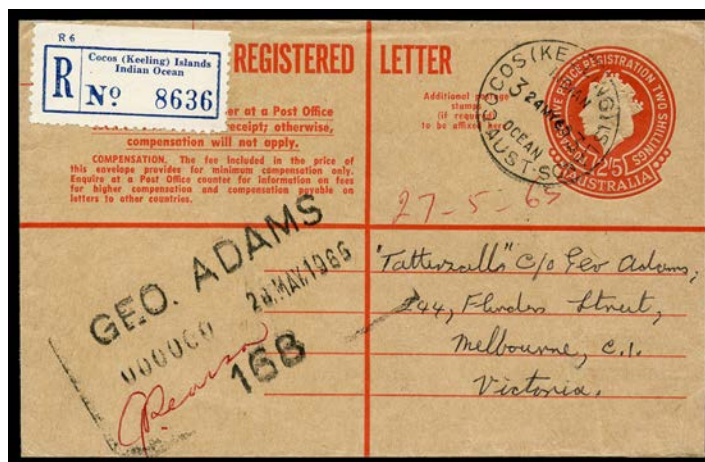
543 PS A **IRELAND: 1932 use of 5d Registration Envelope updated with KGV 5d + Airs 3d & 6d all tied by Brisbane cds, Perth transit cds. The rate was apparently assessed at 2d Empire letter + 3d internal air + 9d air Karachi-Cairo + 3d registration + 2d late fee on a registered article = 17d.**

250^T

| Lot | Type | Grading | Description | Est \$A |
|-----|------|---------|-------------|---------|
|-----|------|---------|-------------|---------|

COCOS ISLANDS - Postal History

| | | | | |
|-----|-----|-----|--|-----|
| 798 | CPS | A/B | 1952 philatelic Tin Can Mail cover that wasn't sent by barrel; 1962 flapless <i>Shell Oil</i> 5d window envelope with #2 cds & the company's 'COCOS ISLAND' h/s; 1962 philatelic use of 5d Envelope to Kenya with #2 cds; and 1964 commercial usage of 2/5d Registration Envelope with #3 cds & 'Cocos (Keeling) Islands/Indian Ocean' R label. (4) | 400 |
|-----|-----|-----|--|-----|

**Lot 832**

| | | | | |
|-----|----|---|---|-----|
| 832 | PS | A | 1965 Australian Registration Envelope QEII 2/5d to Tatts in Melbourne with #3 cds & 'Cocos (Keeling) Islands/Indian Ocean' R label, by air with Melbourne arrival b/s. [Although Cocos' first stamps were issued on 11.6.1963 and replaced the use of Australian stamps, no Cocos postal stationery was issued so Australian issues remained in use] | 200 |
|-----|----|---|---|-----|

HONG KONG

| | | | | |
|-----|----|---|---|-----|
| 898 | PS | C | 1912 usage of two KGV 10c K-size Registration Envelopes to Adelaide, each with KGV 4c 10c 30c & 50c, both opened a bit roughly at left & light overall damp-spotting still presentable. Rare usages. (2) | 250 |
|-----|----|---|---|-----|

MIDDLE EAST

| | | | | |
|-----|----|----|--|-----|
| 948 | PS | A- | ADEN: 1939 usage of KGV1 3a blue Registration Envelope size 203x125mm to Denmark with KGV1 Pictorials ½a & 3a added tied 'ADEN/REG/12JUL39' cds and blue R label on face, 'KOBENHAVN/24.7.39' arrival b/s, a few minor blemishes. Nice usage to an unusual destination. | 200 |
|-----|----|----|--|-----|

AUSTRALIAN COLONIES/STATES - General & Miscellaneous Lots

| | | | | |
|------|----|--|--|-----|
| 1514 | PS | | POSTAL STATIONERY: Range from all Colonies/States, mostly pedestrian but better items include South Australian Registration Envelope (minor toning), Queensland Letter Cards, Tasmanian Letter Card 'GREAT LAKE...' (superb) & STO Envelopes, Victoria Fleet cards, etc, condition variable & most of the Reply Cards have been 'jiggered'. | 250 |
|------|----|--|--|-----|

QUEENSLAND - Postal History**Lot 1749**

| | | | | |
|------|----|----|--|-----|
| 1749 | PS | A- | 1912 (Dec 30) use of De La Rue 3d Registration Envelope to Brisbane with 24mm 'DALBY' cds uprated with 1d pair tied by 28mm cds (rated RRRR in the pre-1913 period), unusual red & black/white 'DALBY.' R label (<i>sans serif</i> text & printed in rosine), minor blemishes. | 300 |
|------|----|----|--|-----|

QUEENSLAND - Postal History (continued)

Lot Type Grading Description

Est \$A



Ex Lot 1750

1750 PS **POSTAL STATIONERY:** Batch of mostly Postal Cards with scenic types 1d brown x9, 1½d black x2, 1d claret x3 & 1d yellow-brown x3, four others with printed notices, etc, mostly used, condition variable but generally good to fine; also **Registration Envelopes** *McCorquodale* formular (minor faults) & *De La Rue* KEVII 3d (very fine) both unused. (31)

400

TASMANIA - Postal Stationery

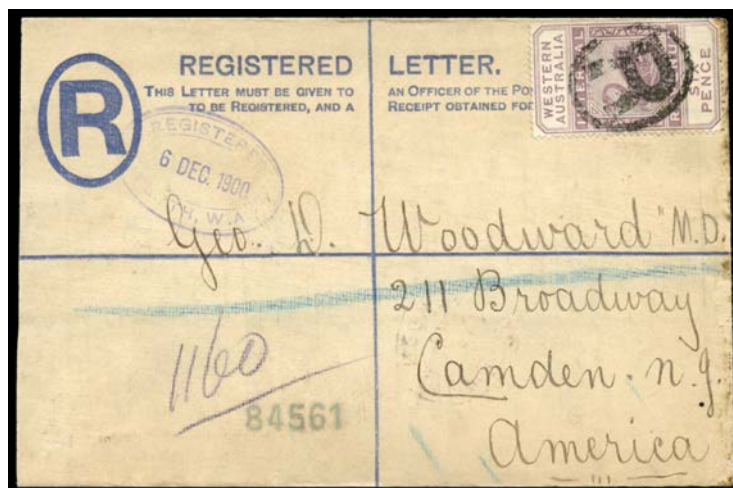


Ex Lot 1980

1980 PS **REGISTRATION ENVELOPES:** Annotated collection of mostly *McCorquodale* issues with shades, papers & knives noted & some duplication, 14 of them are used & one has an unusual 'SPECIMEN' Handstamp, also **Melbourne Printings** 100x64mm (Australia's smallest Registration Envelope) unused, 130x78mm unused & very late but apparently commercial usage in 1927, 127x78mm unused x2 & superb used x2 and 230x110mm unused (spotty), condition variable but generally fine to very fine with only a few of the earlier issues affected by the characteristic shrinkage. A very good lot. *Ex Neil Russell.* (53)

1,000^T

WESTERN AUSTRALIA - Postal Stationery



Lot 2188

2188 PS A - 1900 *McCorquodale Ltd* linen-lined formular issue (150x98mm) Pope #REF2 to New Jersey with scarce franking of Postal Fiscals 6d cancelled with 'R'-in-oval, oval 'REGISTERED/6DEC1900/ PERTH WA' d/s in violet at U/L, New York transit b/s of 1-17/1901, unusually fine for these rare items. [Brian Pope recorded six sizes as having been supplied, but noted only five examples across three of those sizes. Margaret Hamilton's three different sizes sold at the *Macray Watson* auction of 30.3.1999 for \$3740, \$3740 & \$6050 respectively. The 2002 catalogue values of \$1500 to \$2000 only are therefore grossly understated]

2,400^T

Lot Type Grading Description

Est \$A

WESTERN AUSTRALIA - Postal History



Lot 2272

2272 PS B 1904 double-rate usage of 3d Registration Envelope to Burma with 1/2d block of 4 & 3d tied to the reverse by Vasse duplex & boxed 'REGISTERED LETTER/BRANCH/9NOV1904/PERTH WA' d/s in blue, minor blemishes.

200