

Lot Type Grading Description Est \$A

COMMONWEALTH OF AUSTRALIA - Postal History

430 C A- 1916 1916 (Aug 30) cover endorsed "Letter for Germany enclosed/from H Wacker prisoner of war/released on parole", to *Deutsche Hilfsverein* (= German Aid) in Sweden with KGV 1d red x3 (½d convenience overpayment), violet/white censor label & unusually with French censor label & cachet, Stockholm arrival b/s. 150^T

COMMONWEALTH OF AUSTRALIA - Airmail Covers - Commercial

We are pleased to offer the covers to overseas destinations assembled by our old friend John Booker from England.

542 C A- IRELAND: 1930 to Swedish Consulate in Queenstown airmail within Australia & Karachi-Cairo with 9d Kangaroo & 3d Sturt tied by Melbourne cds, on arrival redirected to London with Consulate cachets in purple & 'COBH' cds on the face. [The rate was 2d Empire rate + 3d internal air + 6d Karachi-Cairo + 1d late fee] 150^T



Lot 547

547 C A- SWEDEN: 1939 all-up 'Australia-Greece-Sweden' at 2/2d rate + 3d registration with KGV 5d + Kangaroo 2/- tied by 'REGISTERED BRISBANE' cds, Athens transit b/s & Greek currency control h/s on the face. 150^T

COOK ISLANDS

835 C A 1920 two registered covers to Sweden 1) with 1d red & 10d x3; and 2) with 1/- carmine single & pair. (2) 200^T

FRENCH COMMUNITY

840 C B/A GUADELOUPE: 1882 cover to France with General Series 25c ochre/yellow, and 1900 cover to USA with Tablets 1c 2c pair & 10c pair, both with 'GUADELOUPE/SAINT BARTHELEMY' cds & different 'BASSE TERRE' transit b/s, the first soiled. [In 1784, St Barts was traded by the French to Sweden. Slavery was practised until 1847. In 1878, Sweden gave the island back to France] (2) 150^T

SWEDEN - Inwards Mail



Ex Lot 1189

1189 C/CL The lots in this section are from a collection formed by a European client. Many very scarce origin/destination covers are included.

Canada 1897 5c rate & 1896 'Canada's Great Exposition, Montreal 1896' promotional envelope printed on both sides & registered (a bit tired, with a reinforced central fold, still a spectacular item), Chile 1889 Prices Current, Colombia 1924 airmail with 'SCADTA' franking, Finland 1911 multiview PPC of Kuopio, Italy (Sicily) 5c Postal Card uprated from 'MESSINA', Samoa 1904 with Yachts 10pf pair, and Schleswig 1920 with superb 'COMMISSION/SLESVIG /INTERNATIONALE' cachet in violet, condition variable. (8) 600^T

SWEDEN - Inwards Mail (continued)

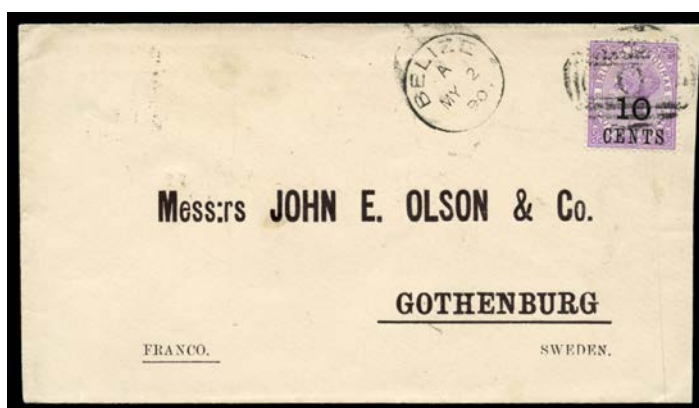
Lot Type Grading Description

Est \$A



Lot 1190

1190 PS A- **AUSTRIAN LEVANT:** 1893 5sld Postal Card to a Rabbi in Stockholm with 'DAVID COHEN, WILNER/JERUSALEM' cachet in blue & the message in Hebrew (Yiddish?), fine 24mm 'GERUSALEMME' cds, very minor blemishes.

200^T

Lot 1191

1191 C A- **BRITISH HONDURAS:** 1890 philatelic cover to Gothenburg with '10/CENTS' on 4d mauve SG 28.

100^T

Lot 1192

1192 PS B **CHINA:** 1901 flimsy 1c Postal Card uprated with Coiling Dragons 1c & 2c tied by 'CANTON' cds, Hong Kong QV 4c grey tied by boxed 'I.P.O.' chop & Hong Kong cds, superb 'SASSNITZ TRELLEBORD/142A' TPO & equally fine 'STORA TUNA' transit cds both on the face, forwarded to 'Dalarna' with very fine 'BORLANGE' b/s, a couple of minor bends.

750^T

1193 C A **- GERMAN POST OFFICES:** 1901 usage of Japanese PPC with social message with 'China' Overprints 5pf pair tied by 'SHANGHAI/DEUTSCHE POST' cds, two different Stockholm cds.

100^T

SWEDEN - Inwards Mail (continued)

Lot Type Grading Description Est \$A



Lot 1194

1194 C B FRENCH COLONIES - SENEGAL: 1899 with Tablet 25c tied by one of two strikes of the octagonal 'BUENOS AYRES A BORDEAUX 1o/LJ No 1' d/s, poor Swedish TPO transit & largely fine 'SUNDSVALL' arrival b/s, minor blemishes. 150^T



Ex Lot 1195

1195 C A GERMANY: 1923 (Nov 24 & 26) mercantile cover with Hyper-Inflation '20/Milliarden' vertical strip of 4, and postcard with '1/Milliarden' vertical strip of 3 & '10/Milliarden' single & pair. (2) 150^T

1196 CL B - 1941 Reich & 1955 Bundespost sample envelopes each with triangular 'Nachnahme' label, the first unusually registered & with Swedish 'Tullgods' Customs label. (2) 150^T



Lot 1197

1197 PS A- ICELAND: 1900 5pf Postal Card endorsed "Pr SS Isafold" uprated with 5pf, very fine British boxed 'SHIP LETTER/TROON' & superb 'TROON/330' transits & Stockholm arrival cds. 140^T

SWEDEN - Inwards Mail (continued)

Lot Type Grading Description

Est \$A



Lot 1198

1198 C A **INDO-CHINA:** 1904 Chinese red/pink greetings envelope with Tablet 10c pair & 15c tied by scarce 'HOA-BINH/TONKIN' cds, 'HANOI' transit b/s. **Gorgeous!**

200^T

Lot 1199

1199 C A **JAPAN:** 1892 European-pattern envelope endorsed "Via Canada" with 2sn irregular block of 5 tied to the reverse by very fine rubber 'YOKOHAMA/JAPAN' cds, 'GOTEBORG/3 V 2 TUR' arrival b/s.

200^T

1200 C B **MOROCCO AGENCIES:** 1898 trader's cover with Overprints on Gibraltar 5c vertical strip of 3, 10c 20c & 25c tied by oval 'REGISTERED/TANGIER' d/s, Stockholm arrival b/s, vertical fold clear of the stamps.

200^T

Lot 1201

1201 PS B **NETHERLANDS INDIES:** 1896 commercial usage of Wilhelm 12½c Envelope uprated with Numerals 2½c & Wilhelmina 10c x2 tied by 'SEMARANG' squared-circles & very fine 'R' h/s below, 'GOTEBORG' arrival, forwarded to Saxony with 'MITTWEID' arrival b/s, minor blemishes.

200^T

SWEDEN - Inwards Mail (continued)

Lot Type Grading Description

Est \$A



Lot 1202

1202 C A **PORTUGUESE COLONIES - MOZAMBIQUE:** 1902 usage of American-style chromolitho advertising envelope for 'Red Fyfe Flour' illustrated on both sides, franked with Lourenco Marques 15c & 50c, 'LUND' arrival b/s. A beautiful envelope.

250^T

Lot 1203

1203 C A- **RUSSIA:** 1876 small cover with 8k tied by 2-line Cyrillic datestamp (a second strike on the reverse), Swedish 21mm 'PKXP No 2' TPO b/s, faint aging.

150^T

Lot 1204

1204 C B **UNITED STATES OF AMERICA:** 1872 yellow cover at 11c rate with 2c brown x2 & 7c vermilion tied by target cancels of 'HOWARD' (faint cds at L/L), New York cds in red at U/R, very fine Swedish '20fr.1½' tax h/s in red & superb 27mm 'PKXP No 2' TPO b/s, minor defects.

250^T

SWEDEN - Inwards Mail (continued)

Lot	Type	Grading	Description	Est \$A
-----	------	---------	-------------	---------

**Lot 1205**

1205	C	A-	URUGUAY: 1882 cover to "Gothenburg" with Rouletted 10c with part [...] Note Co New York' Imprint tied by 'G'-in-Bars, 'SUCUNSA MARITIME/MONTEVIDEO' d/s & French 'BRODEAUX/5 5/GIRONDE' transit cds unusually on the face, very fine 'MAJORNA/2.TUR' arrival b/s, small closed tear at the top.	200 ^T
-------------	---	----	--	------------------