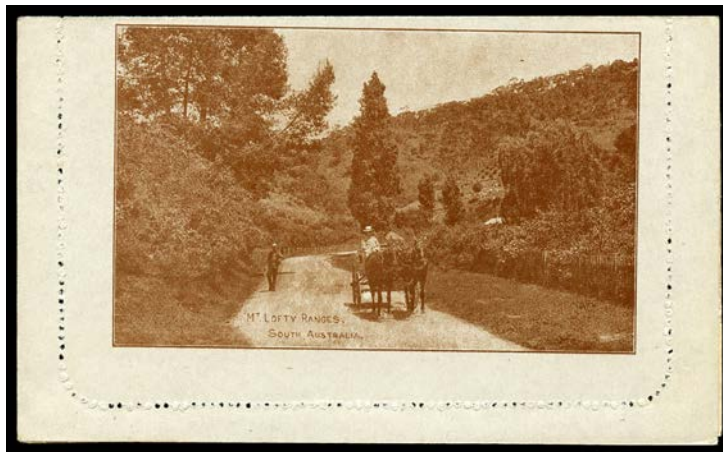


Lot Type Grading Description

Est \$A

COMMONWEALTH OF AUSTRALIA - Postal Stationery - Letter Cards

276	PS		1911-18 Scenic Issues including Fullface 'COLLINS ST MELB' (enamel card; trams), 'CENTRAL RLY STN/SYDNEY' (error for Brisbane) and 'CAIRNS RAILWAY/QUEENSLAND' (waterfall); Kangaroo 'CENTRAL RLY STN/BRISBANE' unframed oval plus another with rectangular view and 'Griffiths Bros' advertising within (minor discolouration) and 'CAIRNS RAILWAY'; KGV Sideface 1d 'COAL MINE/QUEENSLAND' (fine on view side but discoloured on face), 'FLINDERS ST MELB', 'GEELONG HARBOUR' (shipping), 'STURT ST BALLARAT' (tram) x2 (one <i>Without Sky</i> retouch; fine on view side) and 'PUBLIC BUILDINGS/BENDIGO' <i>Without Sky</i> retouch (fine on view side), condition unfortunately quite mixed but those mentioned are generally fine unused except as noted. (32)	500 ^T
-----	----	--	--	------------------

**Ex Lot 277**

277	PS	A/A-	- another unused group with Kangaroo 1d 'TOWN HALL, SYDNEY', 'LAKE ST CLAIR/TASMANIA' and 'MT LOFTY RANGES/SOUTH AUSTRALIA' (stamp and view slightly mis-placed), plus KGV Sideface 1d Die I 'MURRAY RIVER WEST AUST' and Die II 'PINEAPPLES QUEENSLAND', 'WATERFALL GULLY/ADELAIDE' & 'HARVESTING TAMWORTH NSW', couple of minor blemishes but generally fine. (7)	300
279	PS	A/A-	1911-12 KGV Fullface 1d unused group of all-different railway & tramway-related views in various colours comprising 'MONTEZUMA FALLS, HOBART' (train on bridge), 'COLLINS ST MELB' (trams), 'LOG TRAIN/JARRAH FOREST WA', 'CENTRAL RLY STN/SYDNEY' (error for Brisbane), 'CAIRNS RAILWAY/QUEENSLAND' and 'ALBERT BRIDGE/QUEENSLAND' x2 (one on grey stock, the other on enamel card), a couple with minor blemishes. (7)	400 ^T
280	PS	A/B	- 1911-12 KGV Fullface 1d used group of all-different railway & tramway-related views in various colours comprising 'VIADUCT/NEAR ADELAIDE SA', 'MONTEZUMA FALLS, HOBART' (train on bridge), 'COLLINS ST. MELB' (trams) with 'BALAKLAVA/SA' squared circle, 'LOG TRAIN/JARRAH FOREST WA', 'CENTRAL RLY STN/SYDNEY' (error for Brisbane), 'CAIRNS RAILWAY/QUEENSLAND' with 'TERANG/VICTORIA-254' duplex cancel, and 'ALBERT BRIDGE/QUEENSLAND', a couple with blemishes but condition generally fine.	300 ^T

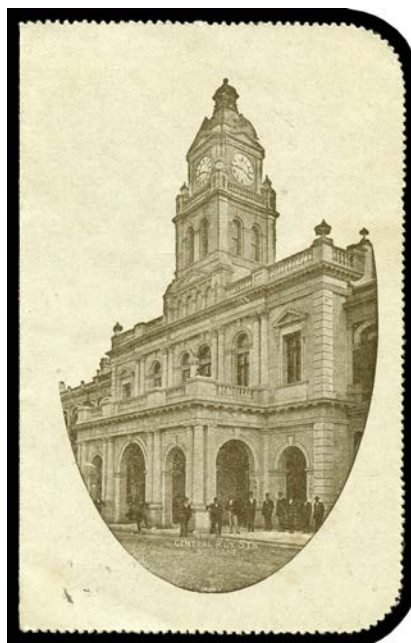
**Ex Lot 289**

289	PS	A/B	1913-14 Kangaroo 1d unused group of all-different railway-related views comprising 'GEELONG HARBOUR' (shipping & rail carriages on pier), 'CAIRNS RAILWAY/QUEENSLAND' (bridge & waterfall) x2 (rectangular & framed oval) and 'CENTRAL RLY STN/BRISBANE' x3 (rectangular, unframed oval & <i>Without Sky</i> retouch), a couple with minor blemishes but mostly fine. (6)	250 ^T
-----	----	-----	--	------------------

COMMONWEALTH OF AUSTRALIA - Postal Stationery - Letter Cards (continued)

Lot Type Grading Description

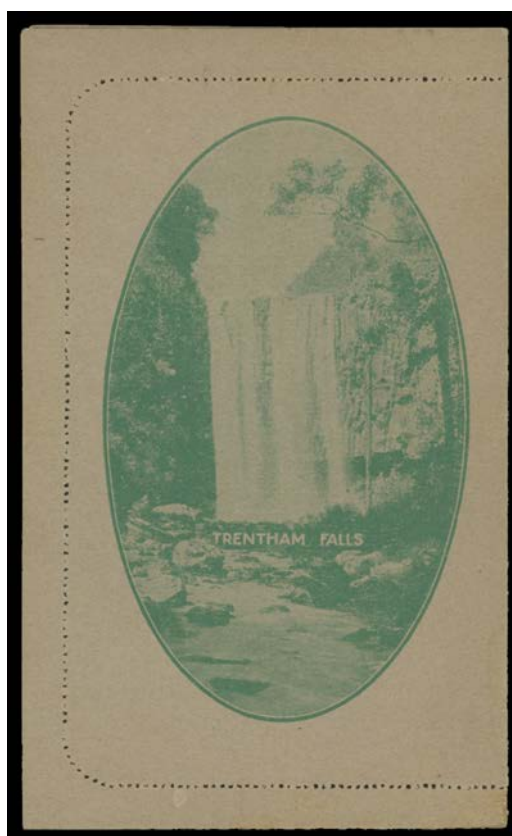
Est \$A



Ex Lot 290

290 PS A/B - used group of all-different railway & tramway-related views comprising 'COLLINS ST. MELB' (trams), 'CAIRNS RAILWAY/QUEENSLAND' (bridge & waterfall) x2 (rectangular & framed oval with 'SADDLEWORTH/SA' squared circle) and 'CENTRAL RLY STN/BRISBANE' x4 (rectangular, framed oval, unframed oval & *Without Sky* retouch), a few blemishes but mostly fine. (7)

250^T



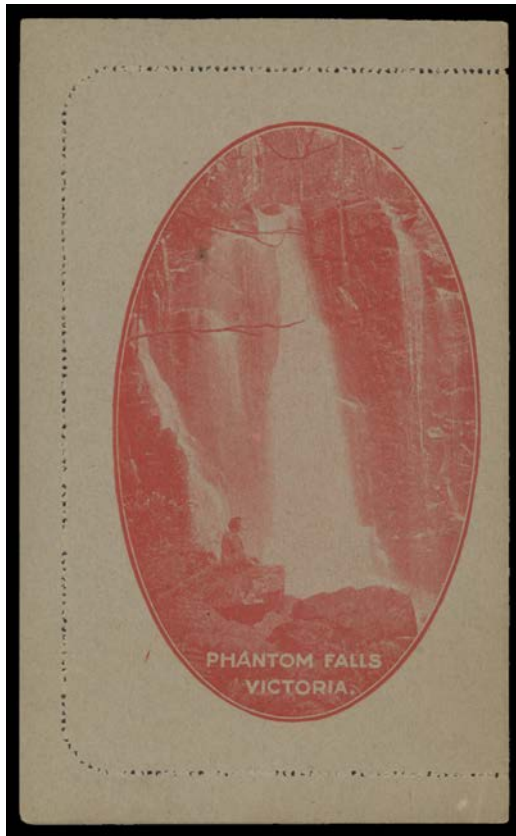
Lot 305

305 PS B 1923 KGV Sideface 1½d Green Uniform Grey Stock Perf 12½ ACSC #LC51 'TRENTHAM FALLS', faint discolouration on the address side, unused, Cat \$1000. **A rare view.**

350

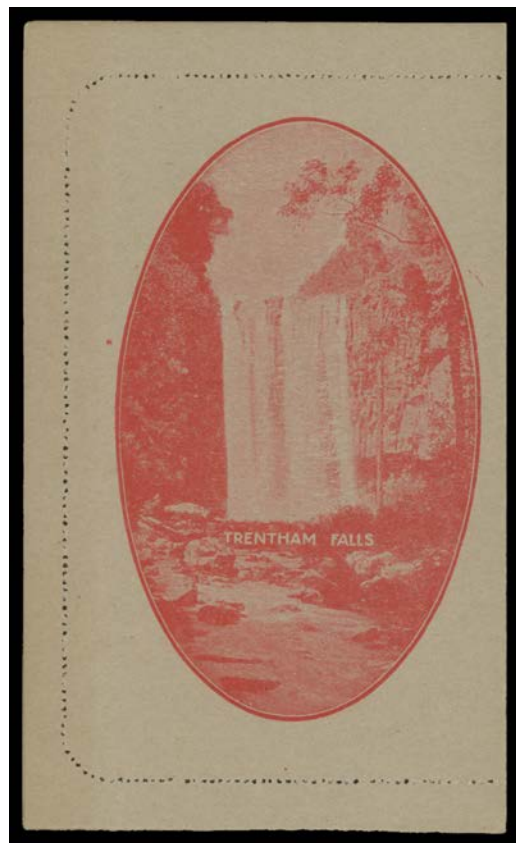
COMMONWEALTH OF AUSTRALIA - Postal Stationery - Letter Cards (continued)

Lot	Type	Grading	Description	Est \$A
-----	------	---------	-------------	---------



Lot 310

310	PS	A	1925 KGV Sideface 1½d Scarlet Unsurfaced Grey Stock ACSC #LC55 'PHANTOM FALLS/VICTORIA', unused, Cat \$500.	300
-----	----	---	---	-----



Lot 311

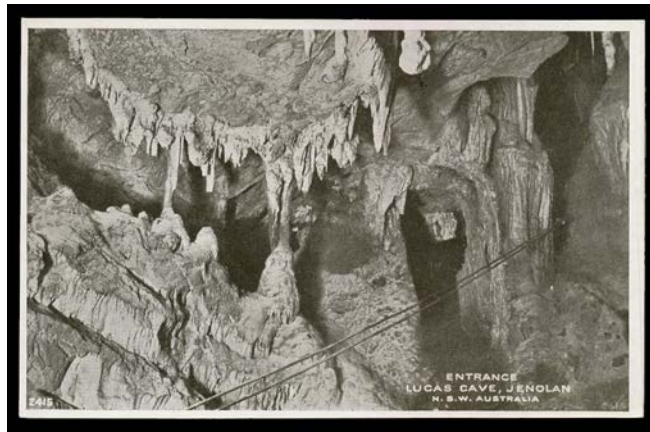
311	PS	A	- 1925 KGV Sideface 1½d Scarlet Unsurfaced Grey Stock ACSC #LC55 'TRENTHAM FALLS', unused, Cat \$750.	380
313	PS	A	- Off-White/Cream Stock Perf 12½ ACSC #LC57 'RUSSELL FALLS/TASMANIA', philatelic usage with intact margins to Germany with 1½d red tied by poor Melbourne cancel, Cat \$400.	150

Lot Type Grading Description

Est \$A

AUSTRALIAN PICTURE POSTCARDS

See also World Postcards: Lots 697 to 726.



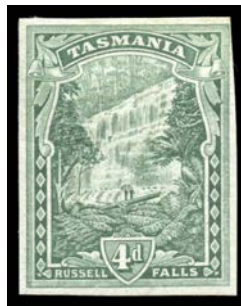
Ex Lot 568

568 C A/A- NEW SOUTH WALES: BLUE MOUNTAINS: Caves & waterfalls etc by various publishers, unused. (27) 100

TASMANIA

Lot 1949

1949 P A- 1899-1900 De La Rue Pictorials 4d 'RUSSELL FALLS' imperforate colour trial in vermilion, a trifle oxidised (which is apparent from the illustration in the *Walton* book) affixed to small piece. 500



Lot 1950

1950 P A - 4d 'RUSSELL FALLS' imperforate colour trial in dull blue-green, large-part o.g. 800^T



Lot 1952

1952 P A - 6d 'DILSTON FALLS' imperforate colour trial in bright grey-blue affixed to small piece. 800

TASMANIA (continued)

Lot Type Grading Description

Est \$A

**Lot 1953**

1953	P	A+	- 6d 'DILSTON FALLS' imperforate colour trial in indigo, close to the colour of the 2½d, with large margin at left, full unmounted o.g. Superb!	800 ^T
1955	*	A B1	1905-11 Electrotpe Crown/A 6d carmine-lake Perf 11 (SG 254a) 'JBC' Monogram single ACSC #T61zc, very well centred, large-part o.g., grossly undercatalogued at \$200.	200

WESTERN AUSTRALIA - Postmarks**Lot 2157**

2157	D	A B1	Golden Ridge: 'GOLDEN RIDGE/25AU20/WESTN AUST' with the <i>Dateline Inverted</i> (LRD; the only strike recorded in the RO period) on KGV 1d red & 1½d brown. Renamed from <i>Waterfall</i> -6.1911; RO 1.7.1920; PO 1.7.1927; TO 15.11.1930; closed 1.4.1954. [Goldmining, 22km ESE of Kalgoorlie. <i>PMI</i> records this second cds in 1914 only, with the dateline inverted. The diameter is given as 28mm. This is an error: it is 26½mm & the arcs are both 2½mm. For the earlier type, the arcs are ½mm]	150 ^T
-------------	---	------	---	------------------